

West Ox Bus Operations Center



Fairfax County Department of Transportation

July 21, 2015



Project History

- Fairfax County Comprehensive Plan–Sep 1975
- Land Acquisition – 1988
- Preliminary Study – June 1989
 - Fairfax County Study – 150 Buses
- County/WMATA “Shared Facility” – May 2002
 - WMATA Study – 200 Buses
- Joint Site Development Program – June 2003
 - Bus Operations Center – 300 Buses
 - PSTOC
 - VDOT Maintenance Facilities and VDOT Admin. HQ.
- 2232 Zoning Approval – April 2004

Project

- Design of Bus Operations – 2004
- Bid – 2006
- Construction Notice to Proceed – January 9, 2007
- Revenue Operations – Commence CY 2009
 - WMATA early CY 2009
 - FCDOT Late CY 2009
- Term of agreement - 75 years
- 100 Buses WMATA and 75 Buses Fairfax County
 - Expanded in 2011 FCDOT 170
- Expansion of storage building in 2012

Project

- WMATA and FCDOT sharing of annual facility operating costs:
 - Utilities such as gas, power, water, trash are paid quarterly based on area occupied
 - Measured automotive cost is based on actual usage and paid monthly
 - Non-measured automotive cost is based on the number of buses and shall be paid quarterly.

Site

- Bus Parking
 - Total Spaces - 270
 - Size: 43 spaces @ 14' x 45'
132 spaces @ 14' x 40'
- Non- Revenue Parking
 - Total Spaces - 35
- Employee Parking:
 - Total Spaces - 243

Site Features

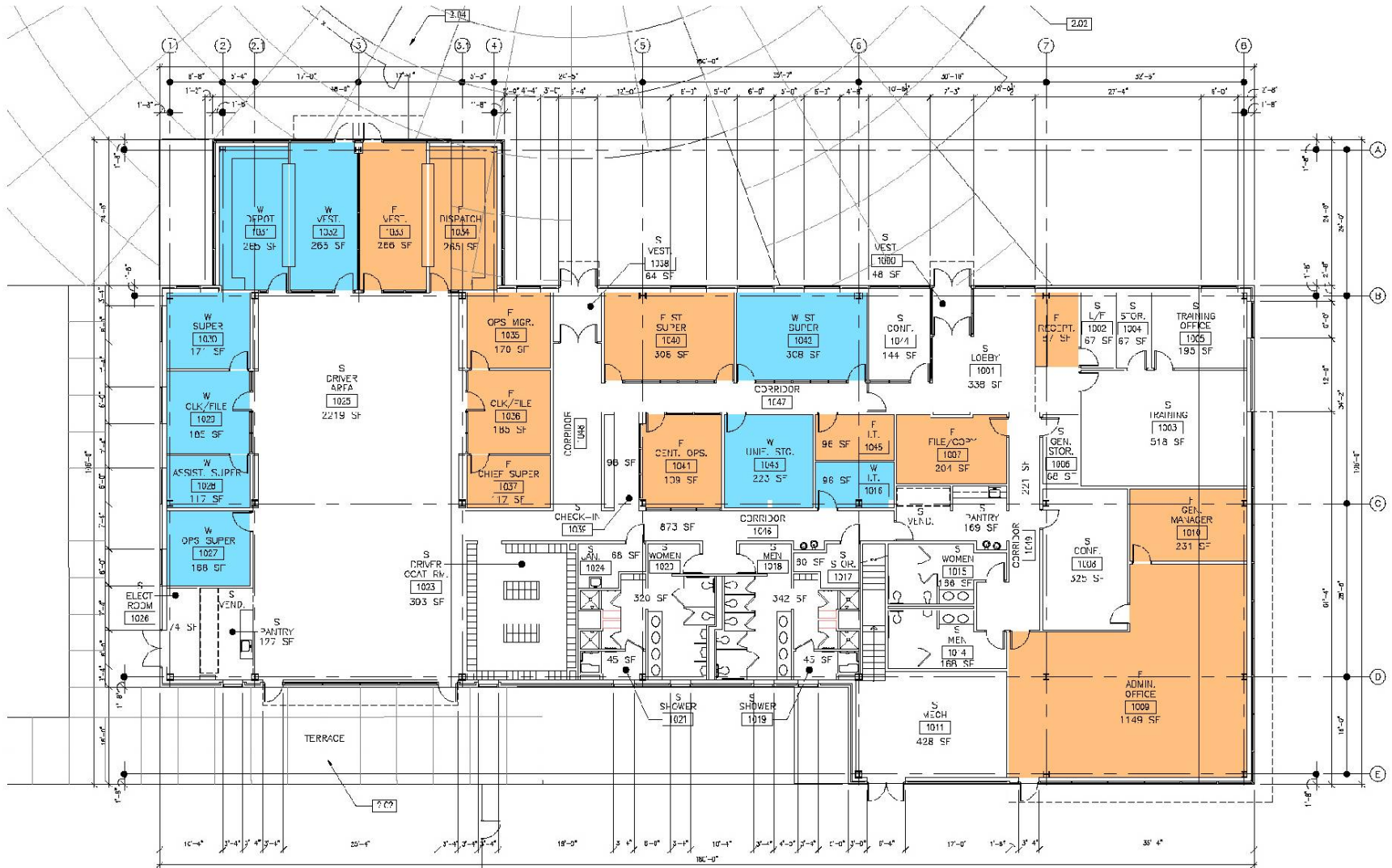
- Three Entrances/Exits
 - Bus Main Entrance
 - Bus Main Exit
 - Employee/Visitors Entrance and Exit
- Fuel Tank Farm
 - Three 20,000 gallon diesel tanks
 - One 15,000 gallon gasoline tank
- Storm water Management Ponds
 - Two Ponds on bus site the serve the West Ox Complex

Program

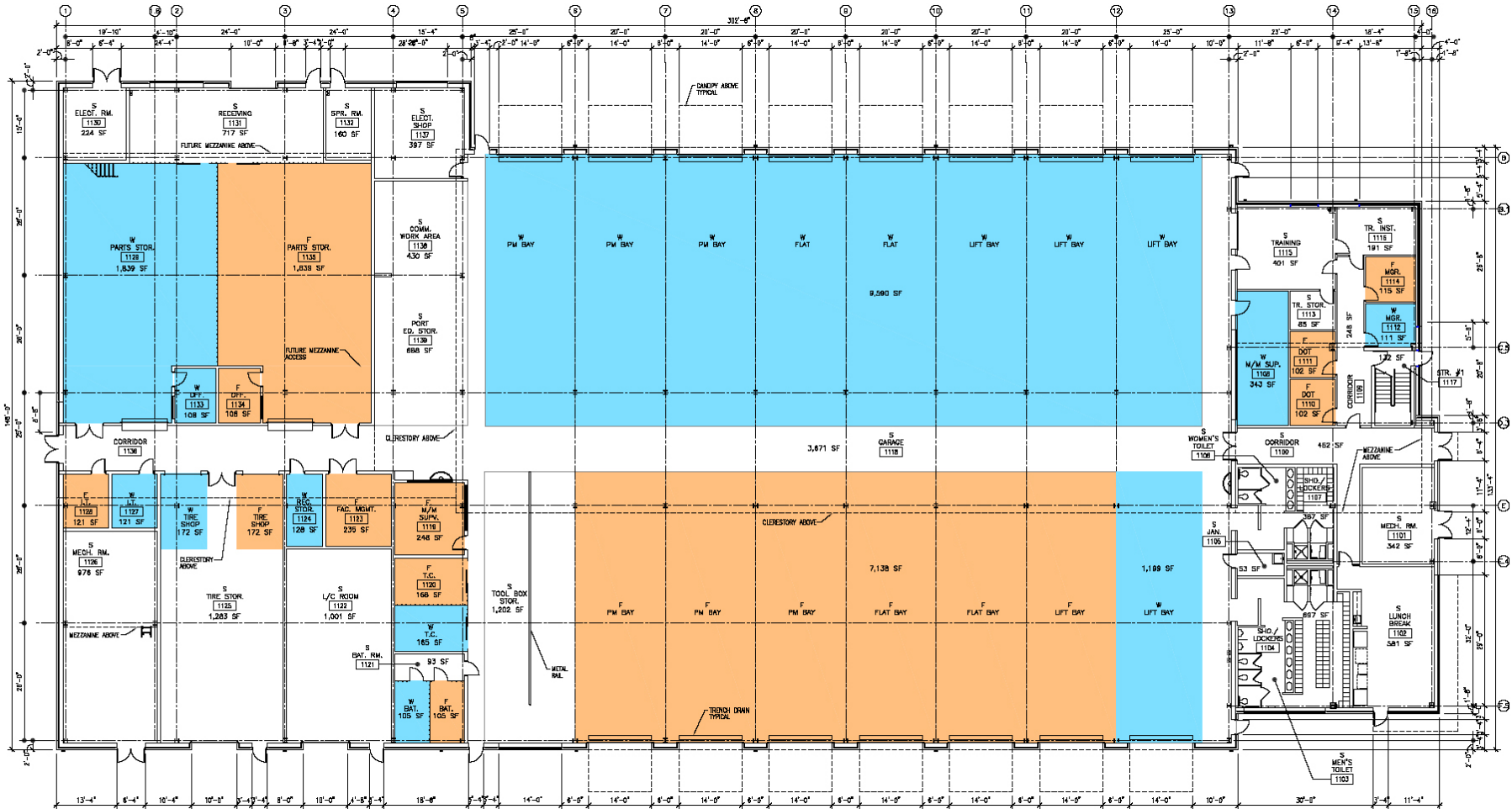
- Building Areas:

- Administration/Operations Building 14,929 GSF
- Maintenance Building 43,266 GSF
- Service Building (Fuel and Wash) 26,476 GSF
- **Total – Phase I 84,671 GSF**

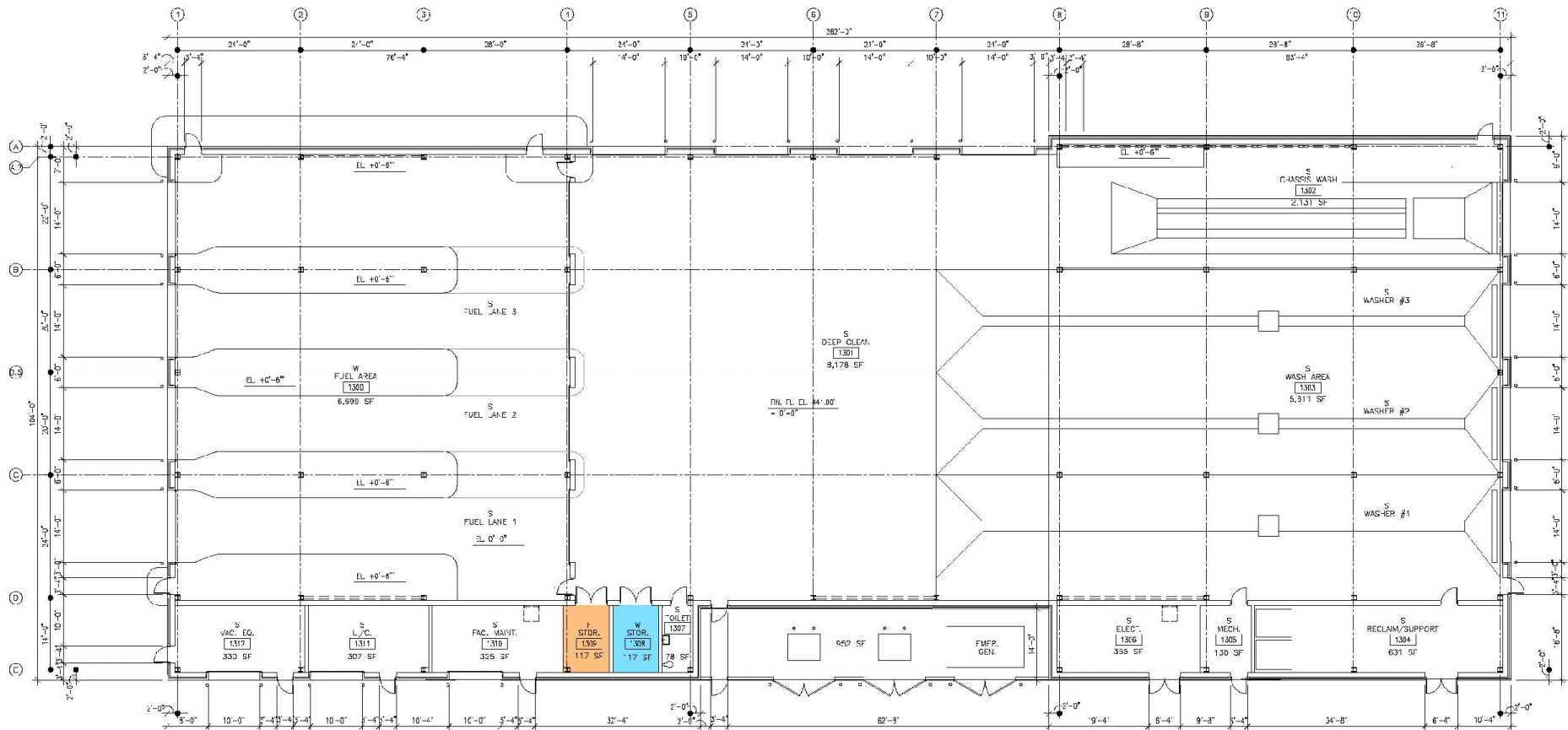
Administration Building



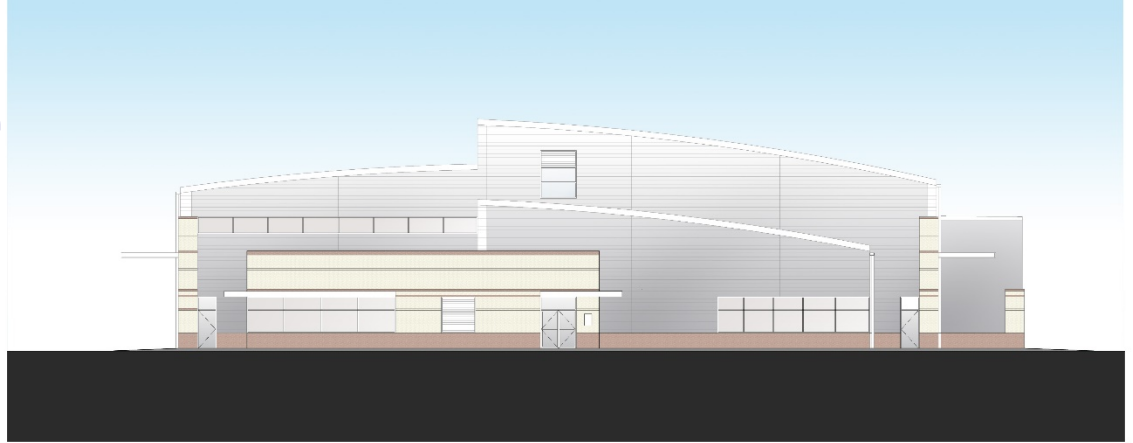
Maintenance Building



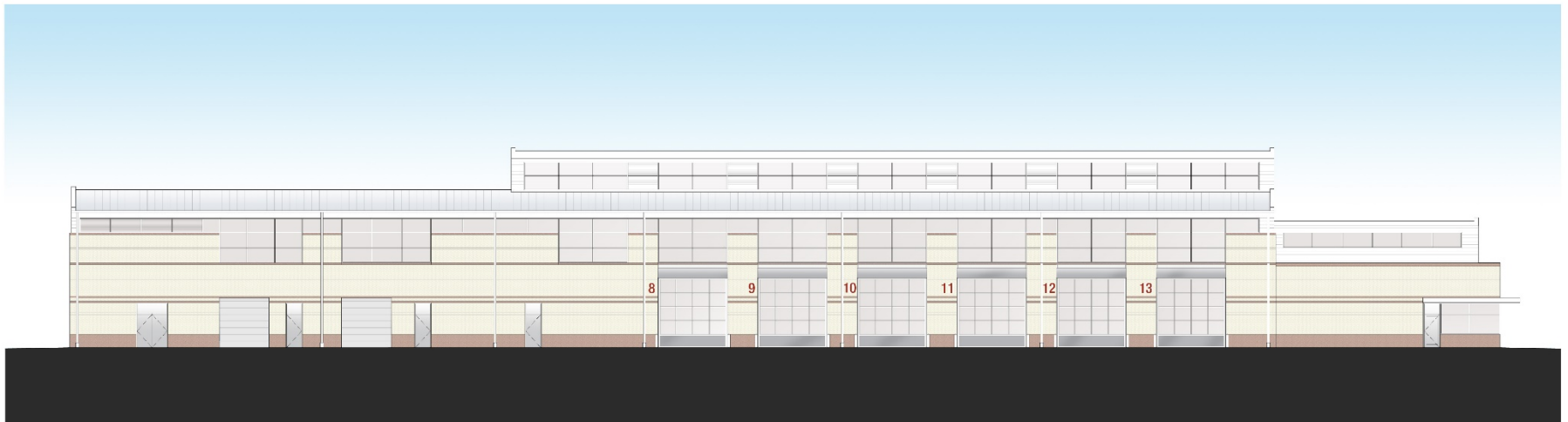
Service Building



Maintenance Building Elevations

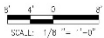


EAST EXTERIOR ELEVATION (MAINTENANCE BUILDING)



SOUTH EXTERIOR ELEVATION

MAINTENANCE BUILDING



West Ox Bus Operations Center

Baker

Metrobus

FAIRFAX CONNECTOR