

Capital Beltway HOT Lanes Project

Project Update – August 16, 2011



- **Project over 75% complete**
- New bridge spans completed at every interchange;
Second spans well underway
- 80% of sound walls completed
- Significant progress on mainline Beltway widening
- Major utility relocations completed

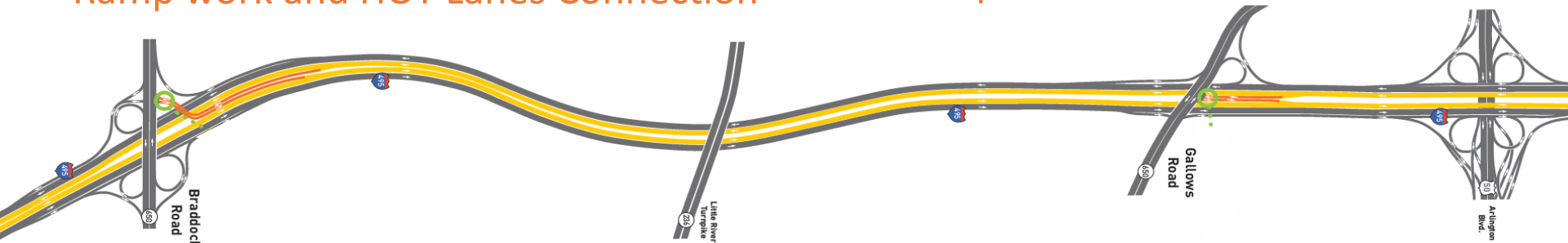


Braddock Rd

- New westbound span completed
- New eastbound span completed 8/12
- Ramp work and HOT Lanes Connection

Gallows Rd

- New southbound span completed
- New northbound span completed
- Ramp to I-495 north reopened 8/12
- Ramp and HOT Lane Connection



Little River Tnpk

- New eastbound span completed
- New westbound span scheduled to open 8/19

Arlington Blvd

- Phase 1 & 2 spans completed
- Center Beltway spans underway
- Left lanes on Route 50 reopened

Mainline Beltway

Significant progress on new outer lanes

Little River Turnpike



Wakefield Park Ped Bridge



Gallows Road



Major Milestones Reached

I-66

- Complete new I-66 eastbound span and new ramps
- Close left exit from I-495 north to I-66 (after Labor Day)
- Ramp and HOT Lanes Connection underway



Lee Highway

- Complete new westbound span late 2011
- Ramp and HOT Lanes Connection underway

Mainline Beltway

Significant progress on new outer lanes



I-66 Interchange



I-66 Interchange



I-495 south



I-495 north

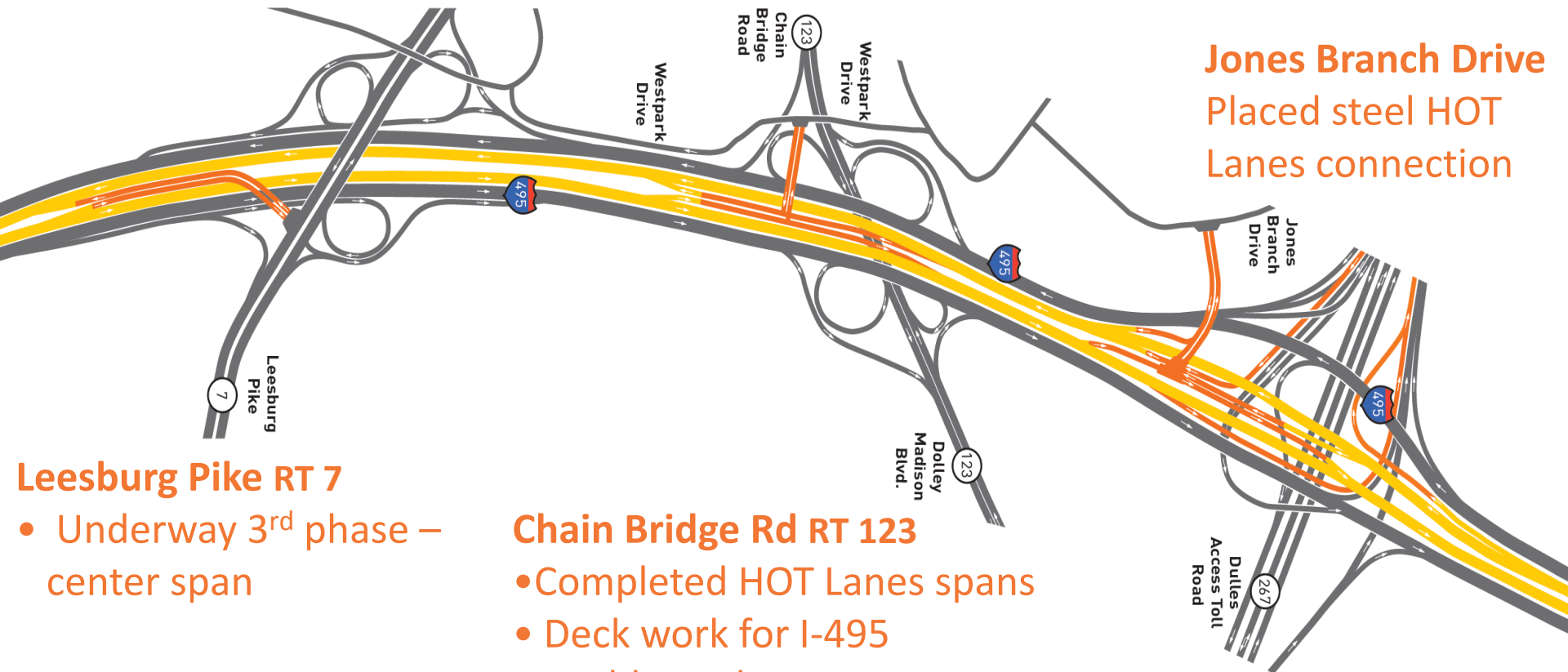
Major Milestones Reached

Westpark Bridge

- Completed bridge widening
- Deck for HOT Lanes connection

Jones Branch Drive

Placed steel HOT Lanes connection



Leesburg Pike RT 7

- Underway 3rd phase – center span

Chain Bridge Rd RT 123

- Completed HOT Lanes spans
- Deck work for I-495 northbound

Dulles Toll Road RT 267

Completed major steel erection

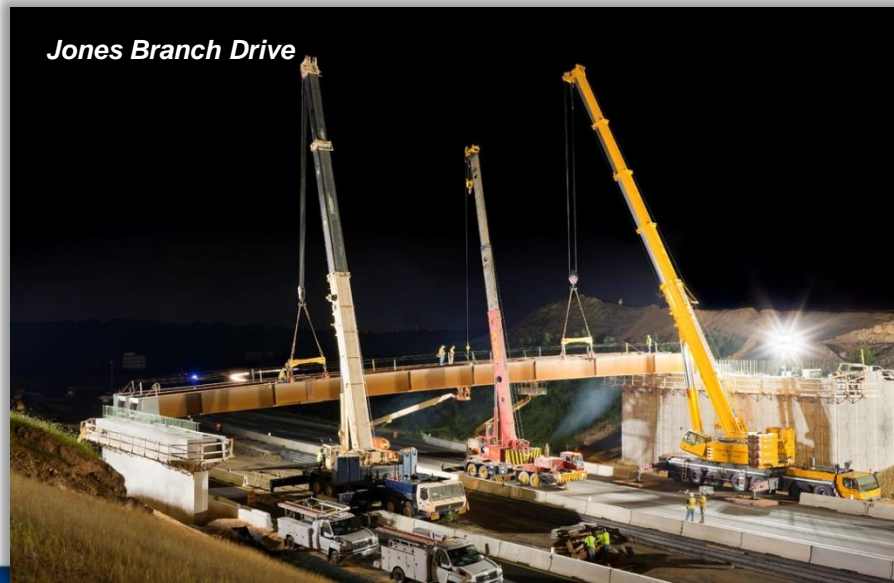
Leesburg Pike



Tysons Corner



Jones Branch Drive





How HOT Lanes Work



Variable pricing: tolls rise and fall based on real-time traffic conditions

Not an everyday toll road: pay a toll for a faster, more predictable travel time

Fully electronic tolling with E-Z Pass: Electronic signs display rates; no toll booths

Ride for Free: Carpools (HOV-3), Transit, Motorcycles and Emergency Vehicles

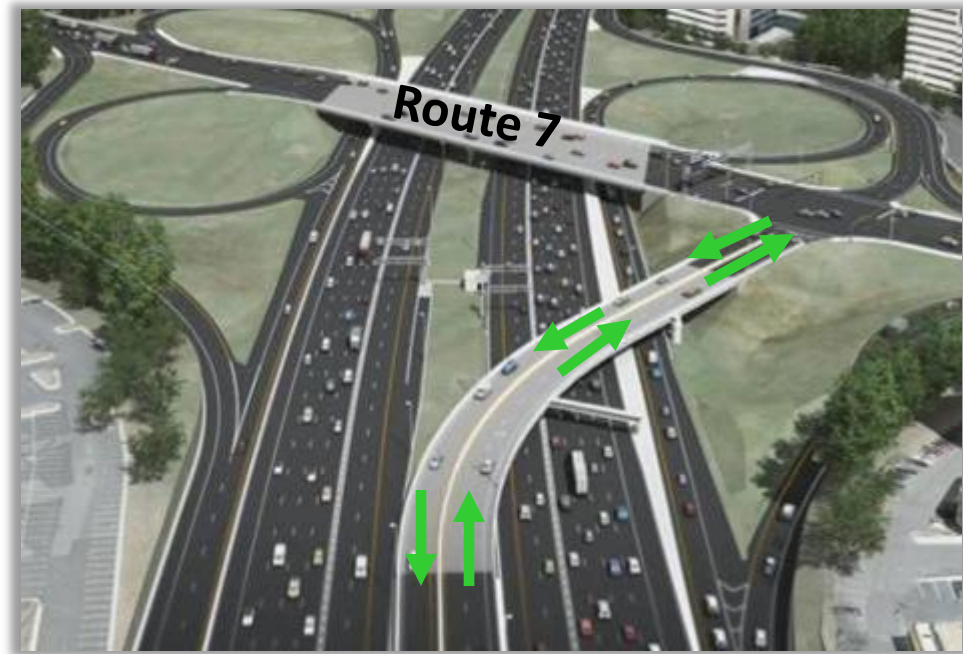
Using HOT Lanes

- **All users will need an E-Z Pass;** carpools will use new switchable E-ZPass for free HOV option
- **Signs approaching access points** will inform drivers of real-time toll rates so drivers can make a choice
- **Electronic gantries** identify vehicle's entry and exit points, and total trip distance
- **State Trooper** enforcement equipped with technology to aid their enforcement



Accessing HOT Lanes

- **Dedicated HOT Lanes entrances and exits ramps** different from the regular Beltway entrances and exits
- **Access from Mainline Beltway**
 - **Northbound HOT Lanes:**
just south of Braddock Rd
 - **Southbound HOT Lanes:**
just north of Dulles Toll Rd
- **Three new access points to/from the Beltway at**
 - Lee Highway (Route 29)
 - Westpark Drive
 - Jones Branch Drive



HOT Lanes: Better Access to Tysons

New Westpark Bridge & Jones Branch Connections

Relief for Routes 7 and 123

- Access Tysons' malls without traveling on Routes 123 or 7
- Better and easier access to major employment sites
- New incentive for carpooling or riding a bus to Tysons
- Will alleviate local traffic to/from McLean and Vienna



Keeping HOT Lanes Moving

Safety/Incident Response – Top Priority



- Designed for communities located in neighborhoods surrounding project corridor
- Supports grassroots and non-profit organizations that offer significant benefit to environment, safety, aesthetics or well-being of local communities
- Since 2009 launch, grant program has supported nearly 36 local organizations
- Check out www.virginiahotlanes.com/grants for more information



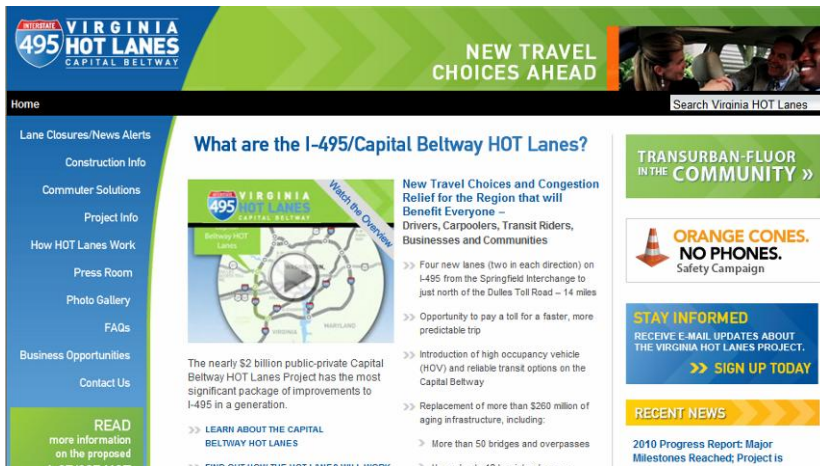


Stay Informed

www.VAmegaprojects.com

Provides information on:

lane closures, travel advisories, email alert sign-up, multiple project links



www.Virginiahotlanes.com

Provides information on:

project details/benefits, detailed construction info/timeline, sign up for progress updates and look ahead at future work