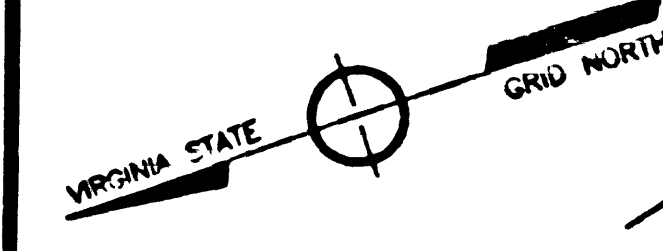


PARKING TABULATION
 10 HANDICAPPED SPACES
 312 STANDARD SPACES
 322 TOTAL SPACES



PEPSI COLA BOTTLERS
 OF WASH. D.C. INC.
 ZONE: I-5
 USE: WAREHOUSE

PEPSI COLA BOTTLERS
 OF WASH. D.C. INC.
 ZONE: I-5
 USE: WAREHOUSE

EX. STR. 13 DI-4C TOP
 TO REMAIN, REPLACE
 EX. STR. BASE

EX. STR. 13 DI-4C TOP
 TO REMAIN, REPLACE
 EX. STR. BASE

EX. STR. 13 DI-4C TOP
 TO REMAIN, REPLACE
 EX. STR. BASE

EX. STR. 13 DI-4C TOP
 TO REMAIN, REPLACE
 EX. STR. BASE

EX. STR. 13 DI-4C TOP
 TO REMAIN, REPLACE
 EX. STR. BASE

EX. STR. 13 DI-4C TOP
 TO REMAIN, REPLACE
 EX. STR. BASE

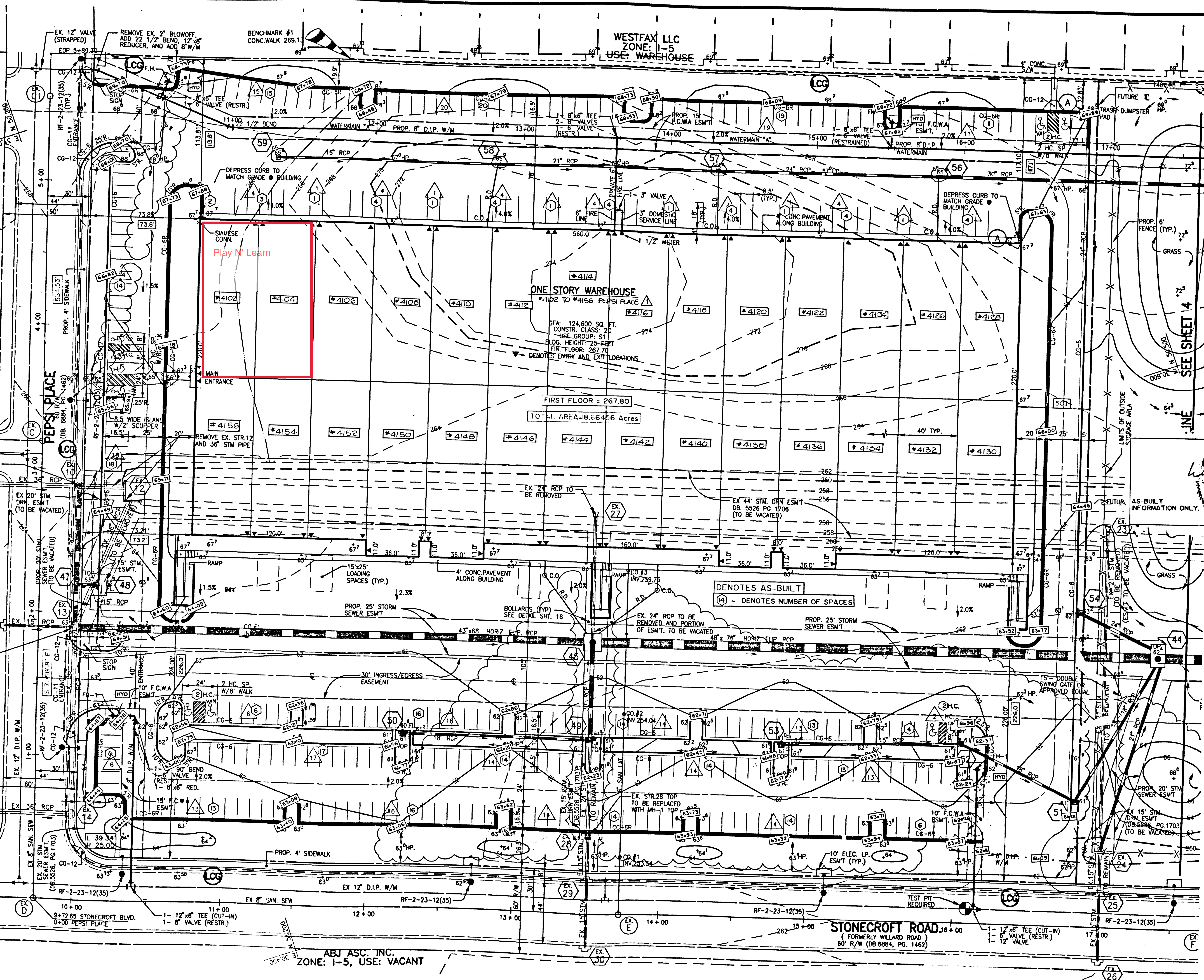
EX. STR. 13 DI-4C TOP
 TO REMAIN, REPLACE
 EX. STR. BASE

EX. STR. 13 DI-4C TOP
 TO REMAIN, REPLACE
 EX. STR. BASE

EX. STR. 13 DI-4C TOP
 TO REMAIN, REPLACE
 EX. STR. BASE

EX. STR. 13 DI-4C TOP
 TO REMAIN, REPLACE
 EX. STR. BASE

EX. STR. 13 DI-4C TOP
 TO REMAIN, REPLACE
 EX. STR. BASE

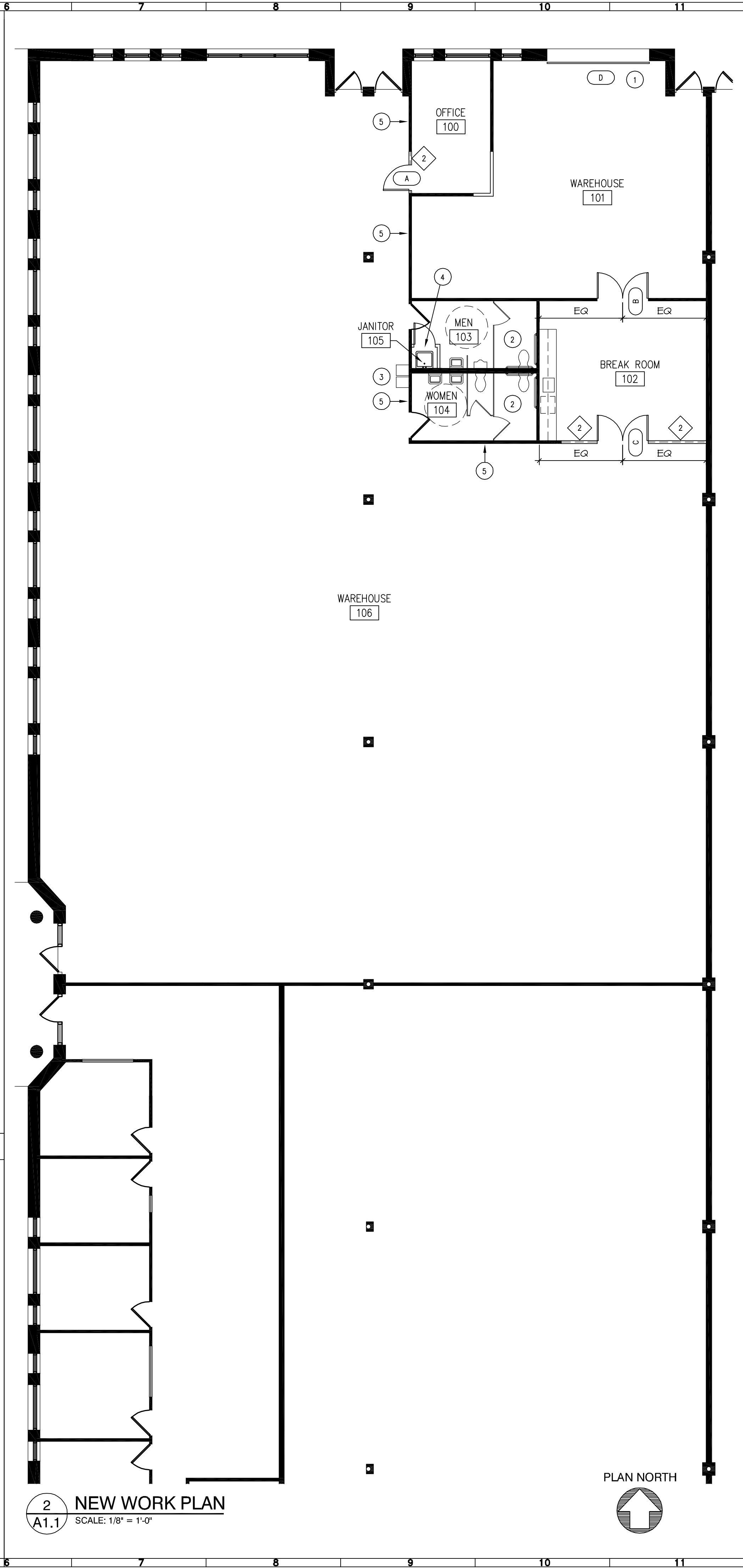
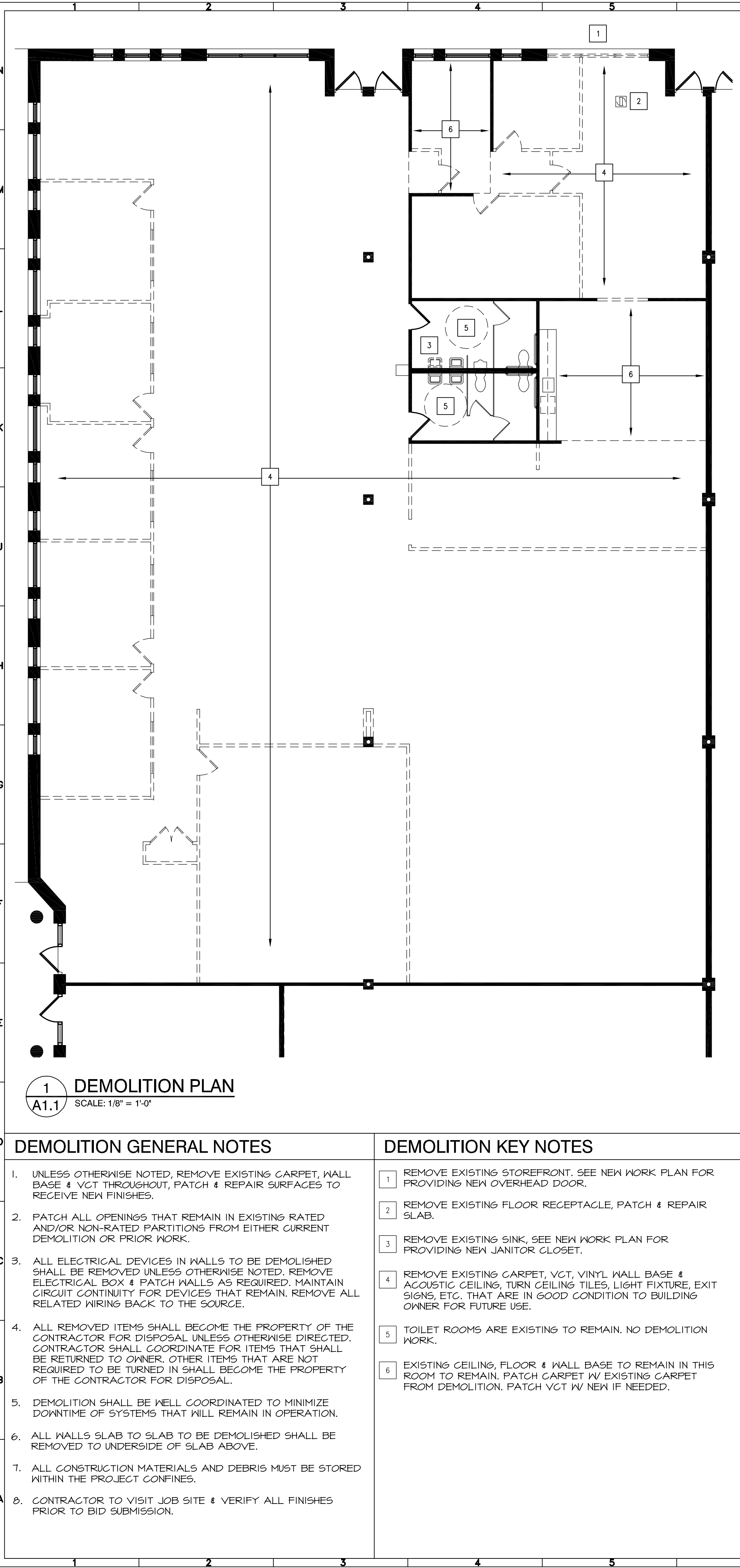


REVISION APPROVED BY DIVISION OF DESIGN REVIEW		DATE 9/30/96 COUNTY COMMENTS 775-571 R/W BLDG ADDRESS:
SURVEY W.H.G.A.	DESIGN R. WALKER	CHECKED J. McLELLAN
DRAWN J.T. WILLIAMS	PROJECT WESTFAX BUILDING F SULLY DISTRICT FAIRFAX COUNTY, VIRGINIA	
JOB 0358-0103	CAD 0358001.DWG	
SHEET 2 of 7		SCALE: HORIZ: 1" = 30' VERT: N/A

PROJECT: VACANT LOT 10, 11, 12, 13, 14, 15, 16, 17, 18, 19, 20, 21, 22, 23, 24, 25, 26, 27, 28, 29, 30, 31, 32, 33, 34, 35, 36, 37, 38, 39, 40, 41, 42, 43, 44, 45, 46, 47, 48, 49, 50, 51, 52, 53, 54, 55, 56, 57, 58, 59, 60, 61, 62, 63, 64, 65, 66, 67, 68, 69, 70, 71, 72, 73, 74, 75, 76, 77, 78, 79, 80, 81, 82, 83, 84, 85, 86, 87, 88, 89, 90, 91, 92, 93, 94, 95, 96, 97, 98, 99, 100, 101, 102, 103, 104, 105, 106, 107, 108, 109, 110, 111, 112, 113, 114, 115, 116, 117, 118, 119, 120, 121, 122, 123, 124, 125, 126, 127, 128, 129, 130, 131, 132, 133, 134, 135, 136, 137, 138, 139, 140, 141, 142, 143, 144, 145, 146, 147, 148, 149, 150, 151, 152, 153, 154, 155, 156, 157, 158, 159, 160, 161, 162, 163, 164, 165, 166, 167, 168, 169, 170, 171, 172, 173, 174, 175, 176, 177, 178, 179, 180, 181, 182, 183, 184, 185, 186, 187, 188, 189, 190, 191, 192, 193, 194, 195, 196, 197, 198, 199, 200, 201, 202, 203, 204, 205, 206, 207, 208, 209, 210, 211, 212, 213, 214, 215, 216, 217, 218, 219, 220, 221, 222, 223, 224, 225, 226, 227, 228, 229, 230, 231, 232, 233, 234, 235, 236, 237, 238, 239, 240, 241, 242, 243, 244, 245, 246, 247, 248, 249, 250, 251, 252, 253, 254, 255, 256, 257, 258, 259, 260, 261, 262, 263, 264, 265, 266, 267, 268, 269, 270, 271, 272, 273, 274, 275, 276, 277, 278, 279, 280, 281, 282, 283, 284, 285, 286, 287, 288, 289, 290, 291, 292, 293, 294, 295, 296, 297, 298, 299, 300, 301, 302, 303, 304, 305, 306, 307, 308, 309, 310, 311, 312, 313, 314, 315, 316, 317, 318, 319, 320, 321, 322, 323, 324, 325, 326, 327, 328, 329, 330, 331, 332, 333, 334, 335, 336, 337, 338, 339, 340, 341, 342, 343, 344, 345, 346, 347, 348, 349, 350, 351, 352, 353, 354, 355, 356, 357, 358, 359, 360, 361, 362, 363, 364, 365, 366, 367, 368, 369, 370, 371, 372, 373, 374, 375, 376, 377, 378, 379, 380, 381, 382, 383, 384, 385, 386, 387, 388, 389, 390, 391, 392, 393, 394, 395, 396, 397, 398, 399, 400, 401, 402, 403, 404, 405, 406, 407, 408, 409, 410, 411, 412, 413, 414, 415, 416, 417, 418, 419, 420, 421, 422, 423, 424, 425, 426, 427, 428, 429, 430, 431, 432, 433, 434, 435, 436, 437, 438, 439, 440, 441, 442, 443, 444, 445, 446, 447, 448, 449, 450, 451, 452, 453, 454, 455, 456, 457, 458, 459, 460, 461, 462, 463, 464, 465, 466, 467, 468, 469, 470, 471, 472, 473, 474, 475, 476, 477, 478, 479, 480, 481, 482, 483, 484, 485, 486, 487, 488, 489, 490, 491, 492, 493, 494, 495, 496, 497, 498, 499, 500, 501, 502, 503, 504, 505, 506, 507, 508, 509, 510, 511, 512, 513, 514, 515, 516, 517, 518, 519, 520, 521, 522, 523, 524, 525, 526, 527, 528, 529, 530, 531, 532, 533, 534, 535, 536, 537, 538, 539, 540, 541, 542, 543, 544, 545, 546, 547, 548, 549, 550, 551, 552, 553, 554, 555, 556, 557, 558, 559, 560, 561, 562, 563, 564, 565, 566, 567, 568, 569, 570, 571, 572, 573, 574, 575, 576, 577, 578, 579, 580, 581, 582, 583, 584, 585, 586, 587, 588, 589, 590, 591, 592, 593, 594, 595, 596, 597, 598, 599, 600, 601, 602, 603, 604, 605, 606, 607, 608, 609, 610, 611, 612, 613, 614, 615, 616, 617, 618, 619, 620, 621, 622, 623, 624, 625, 626, 627, 628, 629, 630, 631, 632, 633, 634, 635, 636, 637, 638, 639, 640, 641, 642, 643, 644, 645, 646, 647, 648, 649, 650, 651, 652, 653, 654, 655, 656, 657, 658, 659, 660, 661, 662, 663, 664, 665, 666, 667, 668, 669, 670, 671, 672, 673, 674, 675, 676, 677, 678, 679, 680, 681, 682, 683, 684, 685, 686, 687, 688, 689, 690, 691, 692, 693, 694, 695, 696, 697, 698, 699, 700, 701, 702, 703, 704, 705, 706, 707, 708, 709, 710, 711, 712, 713, 714, 715, 716, 717, 718, 719, 720, 721, 722, 723, 724, 725, 726, 727, 728, 729, 730, 731, 732, 733, 734, 735, 736, 737, 738, 739, 740, 741, 742, 743, 744, 745, 746, 747, 748, 749, 750, 751, 752, 753, 754, 755, 756, 757, 758, 759, 760, 761, 762, 763, 764, 765, 766, 767, 768, 769, 770, 771, 772, 773, 774, 775, 776, 777, 778, 779, 780, 781, 782, 783, 784, 785, 786, 787, 788, 789, 790, 791, 792, 793, 794, 795, 796, 797, 798, 799, 800, 801, 802, 803, 804, 805, 806, 807, 808, 809, 810, 811, 812, 813, 814, 815, 816, 817, 818, 819, 820, 821, 822, 823, 824, 825, 826, 827, 828, 829, 830, 831, 832, 833, 834, 835, 836, 837, 838, 839, 840, 841, 842, 843, 844, 845, 846, 847, 848, 849, 850, 851, 852, 853, 854, 855, 856, 857, 858, 859, 860, 861, 862, 863, 864, 865, 866, 867, 868, 869, 870, 871, 872, 873, 874, 875, 876, 877, 878, 879, 880, 881, 882, 883, 884, 885, 886, 887, 888, 889, 890, 891, 892, 893, 894, 895, 896, 897, 898, 899, 900, 901, 902, 903, 904, 905, 906, 907, 908, 909, 910, 911, 912, 913, 914, 915, 916, 917, 918, 919, 920, 921, 922, 923, 924, 925, 926, 927, 928, 929, 930, 931, 932, 933, 934, 935, 936, 937, 938, 939, 940, 941, 942, 943, 944, 945, 946, 947, 948, 949, 950, 951, 952, 953, 954, 955, 956, 957, 958, 959, 960, 961, 962, 963, 964, 965, 966, 967, 968, 969, 970, 971, 972, 973, 974, 975, 976, 977, 978, 979, 980, 981, 982, 983, 984, 985, 986, 987, 988, 989, 990, 991, 992, 993, 994, 995, 996, 997, 998, 999, 1000

Tuesday, June 15, 2010 | 5:01pm | C:\DATA\47300 4414 Westfax\47310 Play n' Learn\current\47310 A1.1.dwg

THIS DRAWING AND THE DESIGN SHOWN IS THE PROPERTY OF THE ARCHITECT AND MAY NOT BE REPRODUCED, COPIED OR USED WITHOUT WRITTEN PERMISSION. COPYRIGHT ©2008, INTEC GROUP, INC.



12		13		14		15		16	
LEGEND				NEW WORK KEY NOTES					
<div><div></div>EXISTING WALLS TO REMAIN.</div> <div><div></div>EXISTING PARTITION TO BE REMOVED.</div> <div><div>1</div>NEW FLOOR TO CEILING PARTITION, 1/2" GYP. BD. EACH SIDE OF 3 5/8" METAL STUDS @ 24" O.C. WALL TYPE NOT SHOWN FOR THE PURPOSE OF CLARITY.</div> <div><div>2</div>NEW FLOOR TO DECK PARTITION, 1/2" GYP. BD. EACH SIDE OF 3 5/8" METAL STUDS @ 16" O.C. FLOOR TO DECK ABOVE. PROVIDE KICKERS CEILING TO DECK ABOVE ON CEILING SIDE @ EVERY OTHER STUDS. PROVIDE SLIP ANCHORAGE @ DECK. SEE DETAIL 1 / G1.2.</div> <div><div></div>EXISTING DOOR, FRAME & HARDWARE TO REMAIN.</div> <div><div></div>EXISTING DOOR, FRAME & HARDWARE TO BE REMOVED.</div> <div><div></div>NEW DOOR OR RELOCATED DOOR, FRAME & HARDWARE.</div> <div><div>A</div>DOOR TYPE. SEE DOOR SCHEDULE FOR SPECIFICATIONS.</div> <div><div>2</div>KEY NOTE NUMBER.</div> <div><div>1</div>DEMOLITION NOTES.</div>				<div><div>1</div>NEW BUILDING STANDARD MANUALLY OPERATED OVERHEAD SECTIONAL DOOR, 12'W X 14'H, G. C. TO VERIFY SIZE IN FIELD.</div> <div><div>2</div>PROVIDE 18" VERTICAL GRAB BAR IN ADA STALL PER DETAIL BELOW. CLEAN & REPAINT ALL PARTITIONS.</div> <div><div></div><div><div>34" - 41"</div><div>12 mm</div><div>42" mm</div><div>6"</div><div>18"</div><div>34" - 41"</div><div>33" - 36"</div></div></div>					
<div><div>3</div>PROVIDE NEW DRINKING FOUNTAIN NEXT TO EXISTING ADA FOUNTAIN. TYPE TO MATCH EXISTING.</div> <div><div>4</div>NEW 24" X 24" FIBERGLASS SERVICE TUB W/ LEG SUPPORTS.</div> <div><div>5</div>EXTEND THIS WALL TO UNDERSIDE OF DECK ABOVE. PROVIDE KICKERS CEILING TO DECK ABOVE ON CEILING SIDE @ EVERY OTHER STUDS. PROVIDE SLIP ANCHORAGE @ DECK. SEE DETAIL 1 / G1.2.</div>									
NEW WORK GENERAL NOTES				FINISH NOTES					
<div>A. REFER TO SHEET G1.1 AND G1.2 FOR PROJECT SYMBOLS, INFORMATION AND ABBREVIATIONS.</div> <div>B. THE GENERAL CONTRACTOR TO VERIFY EXTENT OF EXISTING CONSTRUCTION IN FIELD. GENERAL CONTRACTOR SHALL IMMEDIATELY NOTIFY THE ARCHITECT OF ANY AS-BUILT CONDITIONS CONTRARY TO THOSE SHOWN OR INFERRED FROM THESE DRAWINGS.</div> <div>C. ALL NEW PARTITIONS TO BE TYPE I UNLESS OTHERWISE NOTED. REFER TO SHEET G1.2 FOR PARTITION TYPES.</div> <div>D. REFER TO SHEET G1.2 FOR DOOR & HARDWARE SCHEDULES.</div> <div>E. ALL WALL DIMENSIONS ARE TO FACE OF GYP. BD. UNLESS NOTED OTHERWISE.</div> <div>F. G.C. TO PATCH AND REPAIR EXISTING FURRED OUT COLUMN WHERE WALLS WERE REMOVED. PAINT FINISH AS SCHEDULED.</div> <div>G. REFER TO M.E.P. SPECIFICATIONS FOR SLAB PENETRATION FIRE-STOP REQUIREMENTS. MAINTAIN THE EXISTING FLOOR SLAB RATING AT ALL FLOOR SLAB PENETRATIONS.</div> <div>H. ALL LIGHT FIXTURES, EXIT SIGNS, SPEAKER GRILLES, SMOKE DETECTORS, AND SIMILAR DEVICES SHALL BE LOCATED AT THE CENTER OF A.C.T. UNLESS OTHERWISE NOTED.</div> <div>I. GENERAL CONTRACTOR TO COORDINATE MECHANICAL AND LIGHTING DRAWINGS AND NOTIFY ARCHITECT IMMEDIATELY OF ANY DISCREPANCY.</div> <div>J. PATCH ALL OPENINGS THAT REMAIN IN ALL PARTITIONS, TO MATCH ADJOINING SURFACE FINISH.</div> <div>K. G.C. TO NOTIFY ARCHITECT ONCE ELECTRICAL OR TELECOMMUNICATIONS LOCATIONS HAVE BEEN IDENTIFIED (PRIOR TO WALL CLOSE IN) TO VERIFY LOCATION DOES NOT INTERFERE WITH FURNITURE PLACEMENT.</div> <div>L. G.C. TO FLASH PATCH ALL FLOORS AS REQUIRED TO RESTORE CONCRETE FLOOR TO LIKE NEW AND LEVEL CONDITION TO SATISFY ALL ASSEMBLY AND INSTALLATION REQUIREMENTS.</div> <div>M. G.C. TO PATCH ALL SURFACES TO MATCH ADJACENT IN A MANNER SUITABLE TO RECEIVE FINISHES.</div> <div>N. ALL EXISTING PARTITIONS AND FRAMES TO BE FINISHED TO 'LIKE NEW' CONDITION PRIOR TO REPAINTING.</div> <div>O. UNLESS NOTED OTHERWISE, ALL PARTITIONS BUILT TO EXISTING PERIMETER COLUMN TO ALIGN WITH FACE OF COLUMN OR CENTERLINE OF COLUMN.</div> <div>P. G.C. TO PATCH & REFURBISH ALL PERIMETER WINDOW MULLIONS WHERE WALLS WERE REMOVED. PAINT FINISH TO MATCH EXISTING.</div> <div>Q. UNLESS OTHERWISE NOTED, ALL EXISTING PARTITIONS, PAINT GRADE DOORS AND FRAMES ARE TO BE REPAINTED.</div>				<div>WAREHOUSE 106:</div> <div>MALLS: PAINTED, FLAT</div> <div>MALL BASE: 4" VINYL</div> <div>FLOOR: GLUE DOWN CARPET, \$18 / YD.</div> <div>DOOR & FRAME: PAINTED, SEMI GLOSS</div> <div>OFFICE 100:</div> <div>MALLS: PAINTED, EGGSHELL</div> <div>MALL BASE: 4" VINYL</div> <div>FLOOR: EXISTING CARPET</div> <div>DOOR & FRAME: PAINTED, SEMI GLOSS</div> <div>WAREHOUSE 101:</div> <div>MALLS: PAINTED, EGGSHELL</div> <div>MALL BASE: 4" VINYL</div> <div>FLOOR: EXISTING CONCRETE</div> <div>DOOR & FRAME: PAINTED, SEMI GLOSS</div> <div>BREAK ROOM 102:</div> <div>MALLS: PAINTED, EGGSHELL</div> <div>MALL BASE: 4" VINYL</div> <div>FLOOR: EXISTING VCT</div> <div>DOOR & FRAME: PAINTED, SEMI GLOSS</div> <div>TOILET ROOMS & JANITOR CLOSET:</div> <div>MALLS: PAINTED, EGGSHELL</div> <div>MALL BASE: 4" VINYL</div> <div>FLOOR: EXISTING VCT</div> <div>DOOR & FRAME: PAINTED, SEMI GLOSS</div> <div>A. PAINT ALL EXISTING WALLS W/ ONE COAT OF PAINT. PAINT ALL NEW WALLS W/ ONE PRIME COAT & TWO COATS OF PAINT.</div> <div>B. ALL METAL DOOR FRAMES TO BE PAINTED W/ SEMI-GLOSS PAINT TO MATCH ADJACENT WALL COLOR.</div> <div>C. ALL MATERIALS SHALL BE APPLIED IN ACCORDANCE WITH SPECIFICATIONS AND MANUFACTURERS RECOMMENDATIONS.</div> <div>D. PROVIDE VINYL REDUCER STRIPS BETWEEN CARPET AND VINYL FLOORING; STRIPS SHOULD BE CENTERED UNDER DOORS; COLOR TO BE SELECTED BY ARCHITECT. GC TO PROVIDE SAMPLE.</div> <div>E. CONTRACTOR TO FLASH PATCH ALL FLOORS AS REQUIRED TO RESTORE CONCRETE FLOOR TO LIKE NEW AND LEVEL CONDITION TO SATISFY ALL ASSEMBLY AND INSTALLATION REQUIREMENTS.</div> <div>F. ALL MATERIALS ON THE FINISH SCHEDULE MUST BE SUBMITTED IN TRIPLICATE TO ARCHITECT FOR APPROVAL PRIOR TO ORDERING MATERIALS.</div> <div>G. PAINTING SUBCONTRACTOR SHALL SUBMIT SAMPLES TO ARCHITECT FOR APPROVAL PRIOR TO APPLICATION. FINAL POINT SELECTION IS SUBJECT TO ADJUSTMENT OR CHANGE ON SITE.</div> <div>H. CONTRACTOR SHALL BE RESPONSIBLE FOR COORDINATING FLOOR FINISH MATERIALS TO ENSURE THAT TRANSITIONS BETWEEN FLOORING MATERIALS WILL BE SMOOTH AND IN ACCORDANCE WITH DRAWINGS.</div>					
12		13		14		15		16	

3

PROVIDE NEW DRINKING FOUNTAIN NEXT TO EXISTING ADA FOUNTAIN. TYPE TO MATCH EXISTING.

4

NEW 24" X 24" FIBERGLASS SERVICE TUB W/ LEG SUPPORTS.

5

EXTEND THIS WALL TO UNDERSIDE OF DECK ABOVE. PROVIDE KICKERS CEILING TO DECK ABOVE ON CEILING SIDE @ EVERY OTHER STUDS. PROVIDE SLIP ANCHORAGE @ DECK. SEE DETAIL I / G1.2.

INTEC GROUP, INC.

10201 FAIRFAX BOULEVARD

FAIRFAX, VA 22080 703 369-9737

INTEC

DEMOLITION & NEW WORK PLANS

PLAY N' LEARN, INC.
BUILDING F
4104 WESTFAX DRIVE, CHANTILLY, VA

REVISIONS:

DATE OF DRAWING	06/15/10
DRAWING ISSUE DATES:	
BID:	-
PERMIT:	-
CONST.:	-
DRAWN BY:	SC
JOB NO.	47310

A1.1