

ExtraSpace Storage

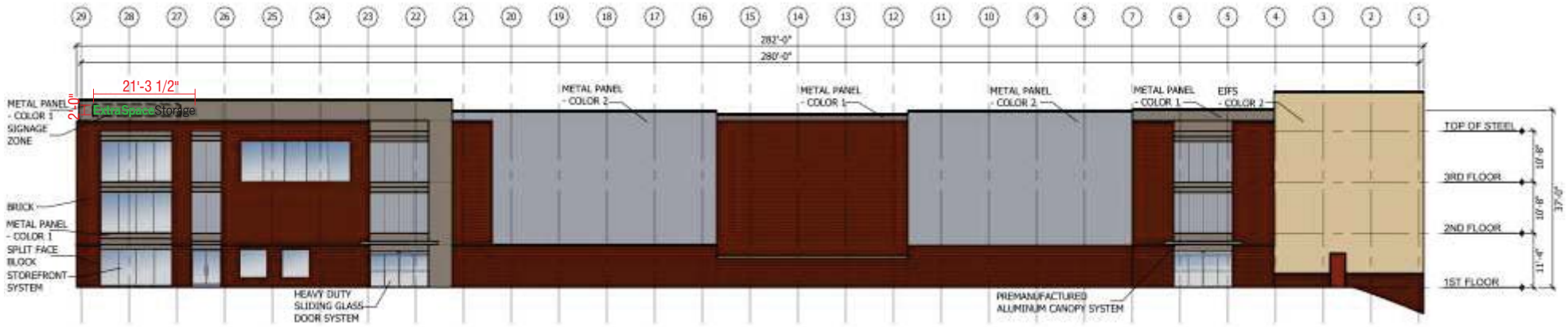
**Extra Space Storage
5800 Fort Drive
Centreville, VA**

Offered by:



700 PARKER SQUARE, SUITE 205
FLOWER MOUND, TX 75028
T. 800.675.6353

**Salesman: Kevin Brown
Sr. Project Manager: Dena Luther**

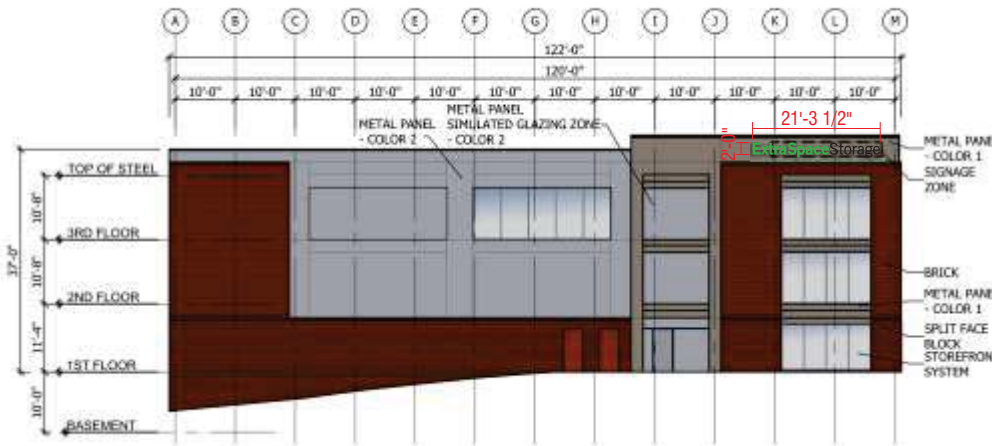


1 PROPOSED NORTH ELEVATION

SCALE: 1/32" = 1'-0"

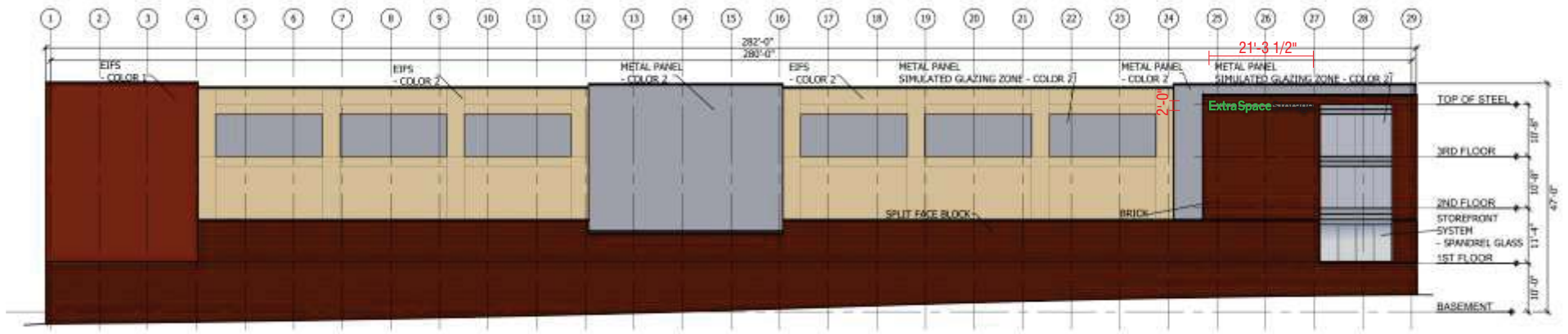
Aggregate sq. Ft. Allowed
 Channel Letter Code: 15' max height Not to exceed 1.5 sf of sign area for the first 100 linear ft of building frontage plus 1 sf of sign area for each linear ft over 100 linear ft of building frontage. No one sign, however, shall have a sign area in excess of 200 square feet.

Sq. Ft. Proposed	Sq. Ft. Existing
42.5 PER SET	NONE



2 PROPOSED EAST ELEVATION

SCALE: 1/32" = 1'-0"



3 PROPOSED NORTH ELEVATION

SCALE: 1/32" = 1'-0"

Aggregate sq. Ft. Allowed	
Channel Letter Code: 15' max height Not to exceed 1.5 sf of sign area for the first 100 linear ft of building frontage plus 1 sf of sign area for each linear ft over 100 linear ft of building frontage. No one sign, however, shall have a sign area in excess of 200 square feet.	
Sq. Ft. Proposed	Sq. Ft. Existing
42.5	NONE

ADART
 700 Parker Sq STE 205
 Flower Mound, TX 75028
 T. 800.675.6353

Project: EXTRA SPACE STORAGE
Location: 5800 Fort Drive
 Centreville, VA
Date: 6/26/17 **Sales:** KB **Designer:** MRG
File Name: ESS CENTERVILLE VA-04

Revision
 01-6/27/17-mrq-add cab depth dim
 02-6/28/17-mrq-add df cab led layout
 03-10/16/-mrq-add south elev. CL
 04-10-16-17-mrq-relocate south elev. CL to right side

Approvals
Customer: _____
Landlord: _____

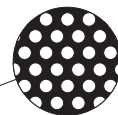
CONCEPTUAL DRAWINGS ONLY:
 Dimensions are approximate & may change due to construction factors or exact field conditions. Colors shown are as close as printing will allow. Always follow written specifications.
ALL RIGHTS RESERVED:
 This design has been created for you in connection with a project being planned for you by AD ART. It may not be shown to anyone outside your organization, and may not be reproduced in any manner without prior consent.

SHEET
2

ExtraSpaceStorage®

21'-3 1/2"

2'-0"



1/4" ALUMINUM PAINTED WHITE WITH ARLON #2500-022 BLACK VINYL COPY - PIN MOUNT FLUSH TO FASCIA

Digital Timer Technical Specifications



Name: Intermatic ET8015C 7-Day 30-Amps SPST Electronic Astronomic Time Switch.
 Voltage: 120-277 VAC, 50/60 Hz
 Circuit: (1) 30 amp
 Enclosure: NEMA 1
 Weight: 2.8 pounds
 Dimensions: 5.2 x 3.2 x 8 inches
 Time Switch: 7-Day Astronomic
 Backup: 2 AAA Batteries

- 1
- 2
- 3

24" CHANNEL LETTERS - RACEWAY MOUNTED

(3) SETS REQUIRED - FABRICATE AND INSTALL -
 INSTALL (1) NEW TIMER

SCALE: 1/4" = 1'-0"

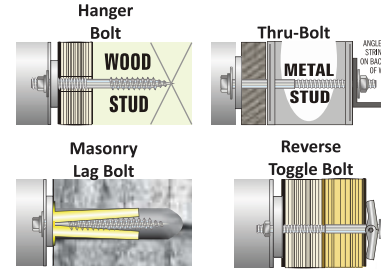
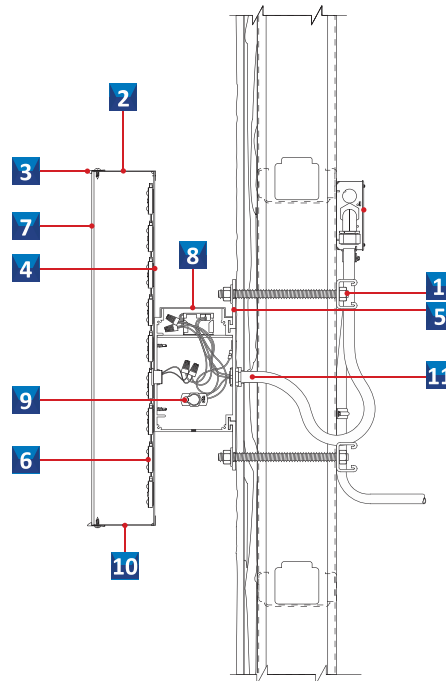
Aggregate sq. Ft. Allowed

Channel Letter Code: 15' max height Not to exceed 1.5 sf of sign area for the first 100 linear ft of building frontage plus 1 sf of sign area for each linear ft over 100 linear ft of building frontage. No one sign, however, shall have a sign area in excess of 200 square feet.

Sq. Ft. Proposed	Sq. Ft. Existing
42.5 PER SET	NONE

SPECIFICATION SECTION DETAIL MOUNTING DETAILS COLOR SCHEDULE

- 1 NON-CORROSIVE INSTALLATION HARDWARE: GALVANIZED
- 2 5" FABRICATED ALUMINUM LETTER RETURNS SEE MFG. NOTE FOR GUAGE. GLOSS BLACK PAINT INTERIOR WITH LIGHT ENHANCING PAINT
- 3 TRIM CAP RETAINER METALLIC SILVER
- 4 FLAT ALUMINUM BACK
- 5 1/4" THICK METAL FLAT BAR FOR A SECURE INSTALLATION
- 6 TRUE WHITE STREET FIGHTER HEAVYWEIGHT LED MODULES
- 7 3/16" #7328 ACRYLIC FACE WHITE WITH 1ST SURFACE TRANSLUCENT & PERFORATED VINYL AS SHOWN
- 8 LOW VOLTAGE ELECTRONIC POWER SUPPLY MOUNTED IN A 7 1/4" X 7 1/4" EXTRUDED .050 ALUM. RACEWAY SUPPORT/WIRING BOX PAINTED
- 9 VISIBLE CUT-OFF SWITCH WITH FLIP-UP COVER
- 10 1/4" WEEP HOLES (2) TWO PER LETTER
- 11 GROUNDED WALL PASS-THRU SEALED WATER TIGHT. WHIP ON LEFT SIDE.



*All Hardware to be Galvanized and Non Corrosive

COLOR	CODE
GREEN	#2500-106 BRILLIANT
GREY	METALLIC SILVER TRIMCAP
BLACK	PMS BLACK #2500-022
WHITE	WHITE

MANUFACTURING NOTES

CHANNEL LETTER SETS SMALLER THAN 48" WILL BE CONSTRUCTED USING .040 ALUMINUM RETURNS & .063 ALUMINUM BACKS

CHANNEL LETTER SETS 48"-71" WILL BE CONSTRUCTED USING .063 ALUMINUM RETURNS & .090 ALUMINUM BACKS

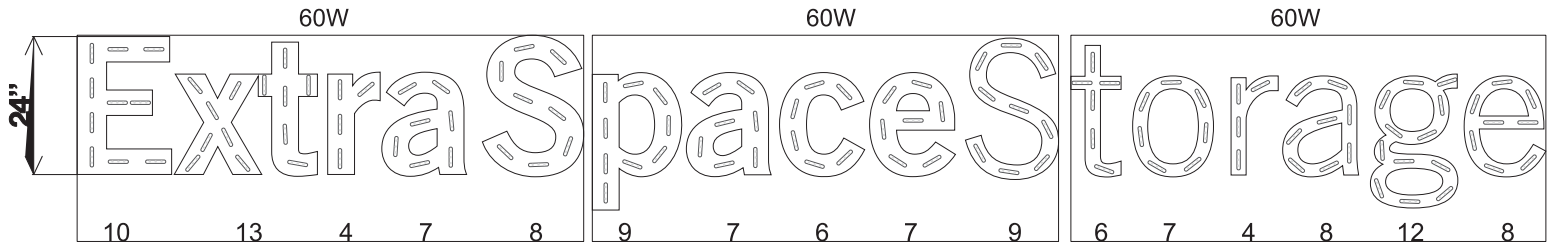
BRACING DETAIL

WHEN NEEDED SUPPORTS TO BE .090" ALUMINUM PAINTED TO MATCH RW POP-RIVITED TO RETURN (FACING UP TO HIDE FROM SIGHT)



TITLE		
EXTRA SPACE STORAGE		
DATE 08-08-16	DRAWN BY : IDV	
SIGN HEIGHT 24" : E = 5.1"	SIGN DEPTH 5"	FACE MATERIAL: ACRYLIC

NOTE:
45 MODULES PER 60W PS



PERMITTED ONE (1) FREESTANDING SIGN. SUCH SIGN SHALL BE LIMITED TO A MAXIMUM SIGN AREA OF FORTY (40) SF. WITH A MAX HT OF 20'

AMP DRAW: 3.6A

ESTIMATED PRODUCT PER SIGN
FACE LIT
(125) TRUE WHITE STREET FIGHTER HEAVYWEIGHT MODULES (PL-OP2-HW3-P-TW)
70FT TRUE WHITE STREET FIGHTER HEAVYWEIGHT MODULES
(3) 60W POWER SUPPLIES (PL-PS-60-12)

CAUTION: THIS LAYOUT IS ONLY AN ESTIMATE.
Channel letter depth, face color, material, and thickness can vary which may effect the number of modules required. To ensure accuracy, it is recommended that you test light in a darkened environment prior to installing or shipping to the site to ensure the light output is commercially acceptable. Final material estimates are the responsibility of the sign manufacturer. Unless noted in header, Layout is based on the use of acrylic face material.

1 2 3

24" CHANNEL LETTER L.E.D. LAYOUT

NOT TO SCALE

ADART
700 Parker Sq STE 205
Flower Mound, TX 75028
T. 800.675.6353

Project: EXTRA SPACE STORAGE

Location: 5800 Fort Drive
Centreville, VA

Date: 6/26/17 **Sales:** KB **Designer:** MRG
File Name: ESS CENTERVILLE VA-04

Revision

01-6/27/17-mrg-add cab depth dim
02-6/28/17-mrg-add df cab led layout
03-10/16-mrg-add south elev. CL
04-10-16-17-mrg-relocate south elev. CL to right side

Approvals

Customer: _____

Landlord: _____

CONCEPTUAL DRAWINGS ONLY:
Dimensions are approximate & may change due to construction factors or exact field conditions. Colors shown are as close as printing will allow. Always follow written specifications.

ALL RIGHTS RESERVED:
This design has been created for you in connection with a project being planned for you by AD ART. It may not be shown to anyone outside your organization, and may not be reproduced in any manner without prior consent.

SHEET

4