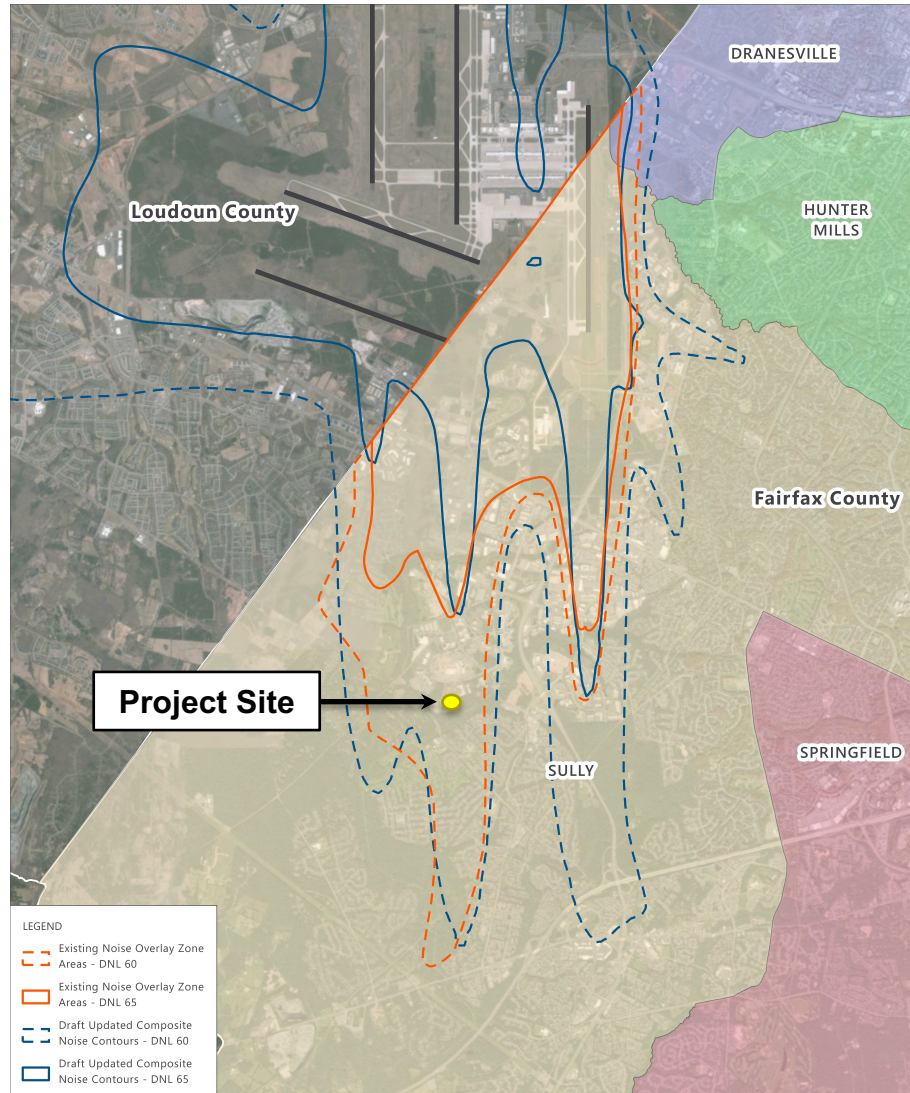


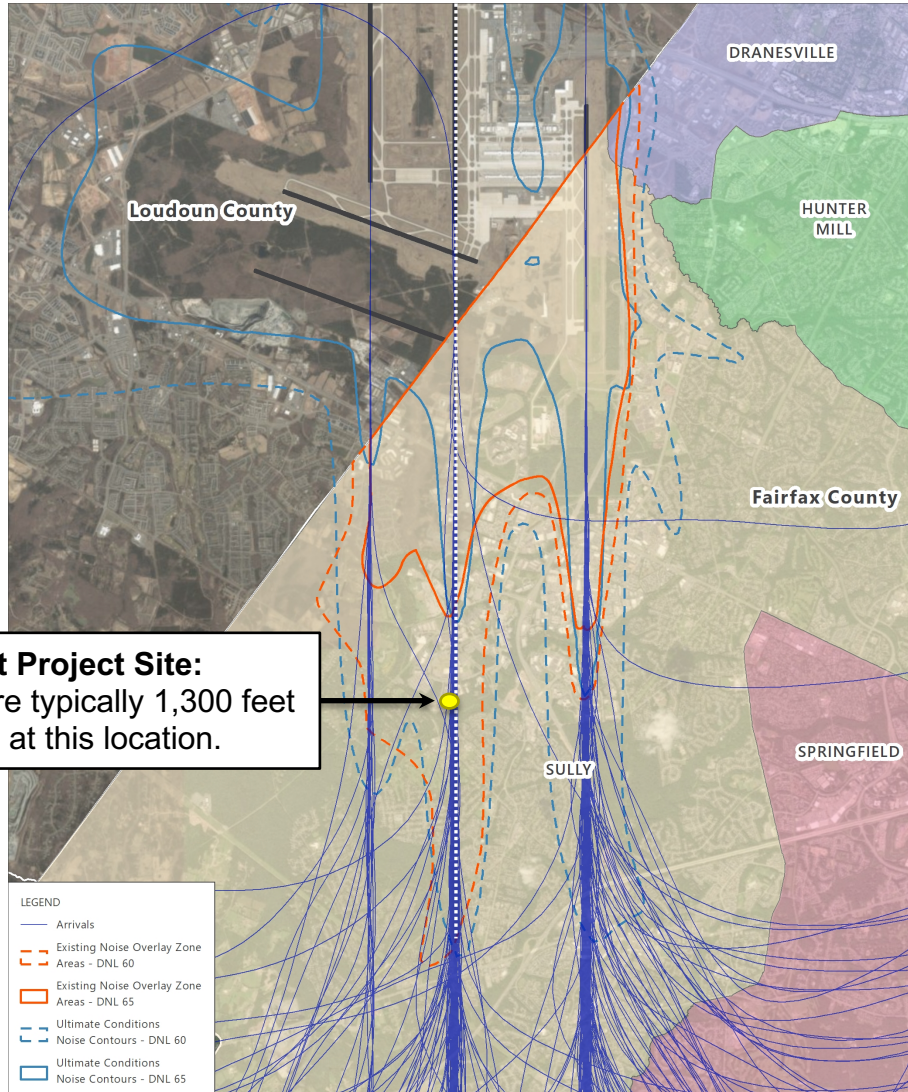
# Washington Dulles International Airport – Current Airport Noise Overlay District and Updated (2019) Noise Contours



Source: Esri, DigitalGlobe, GeoEye, Earthstar Geographics, CNES/Airbus DS, USDA, USGS, AeroGRID, IGN, and the GIS User Community, May 2018 (aerial basemap); Fairfax County, Virginia, 2018 (airport impact overlay districts and county supervisor districts); HMMH, February 2019 (Ultimate Conditions contours).

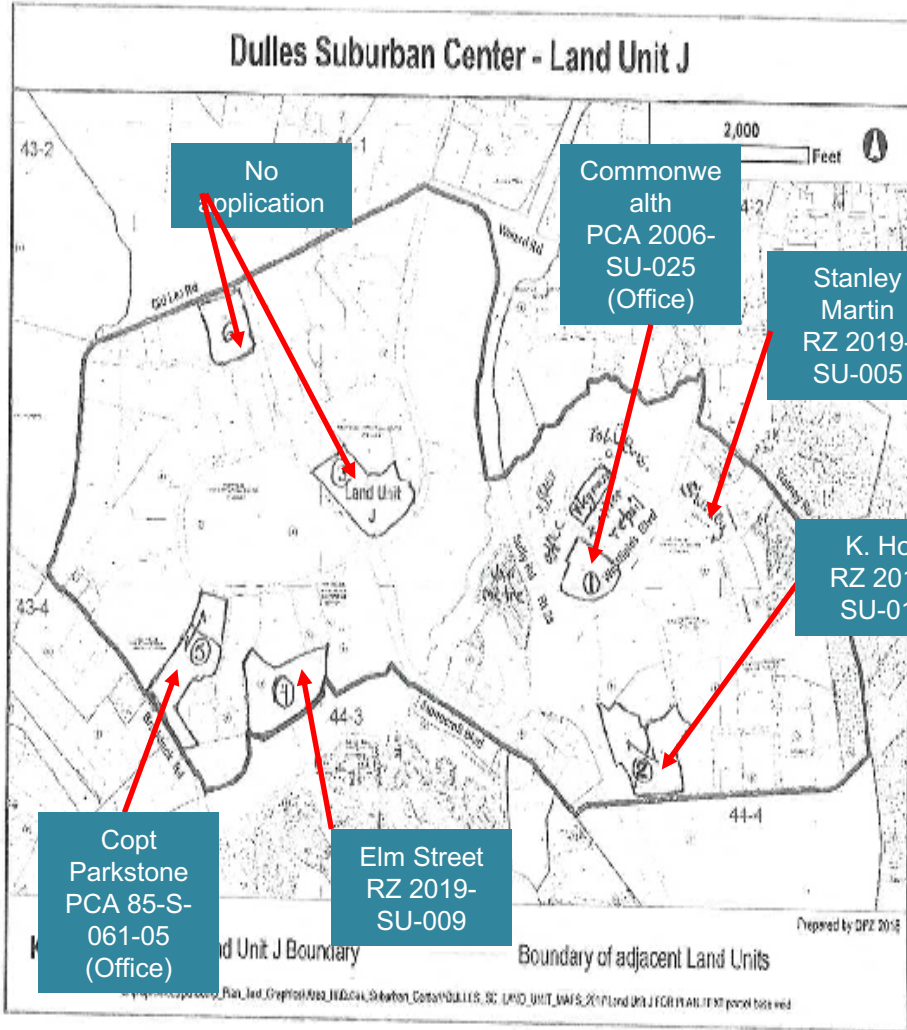


# Washington Dulles International Airport 60 & 65 DNL Contours with Arrival Paths in Relation to Elm Street Communities, Inc.



**Elm Street Project Site:**  
Arriving aircraft are typically 1,300 feet above the ground at this location.

Source: Esri, DigitalGlobe, GeoEye, Earthstar Geographics, CNES/Airbus DS, USDA, USGS, AeroGRID, IGN, and the GIS User Community, May 2018 (aerial basemap); Fairfax County, Virginia, 2018 (airport impact overlay districts and county supervisor districts); HMMH, February 2019 (Ultimate Conditions contours).

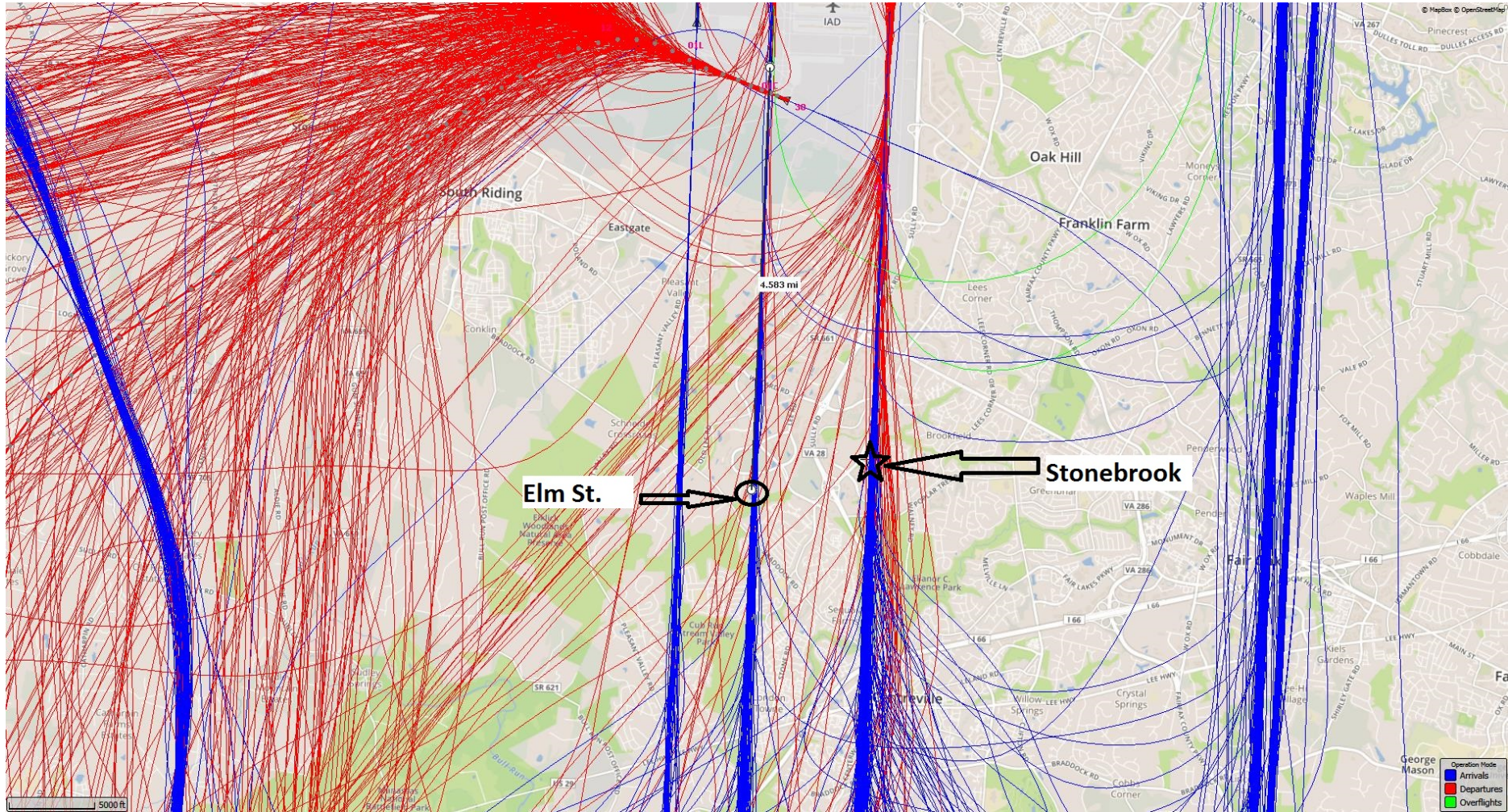


FAIRFAX COUNTY COMPREHENSIVE PLAN, 2017 Edition  
Dulles Suburban Center, Amended through 5-7-2019  
Dulles Suburban Center Land Unit Recommendations

AREA III  
Page 127

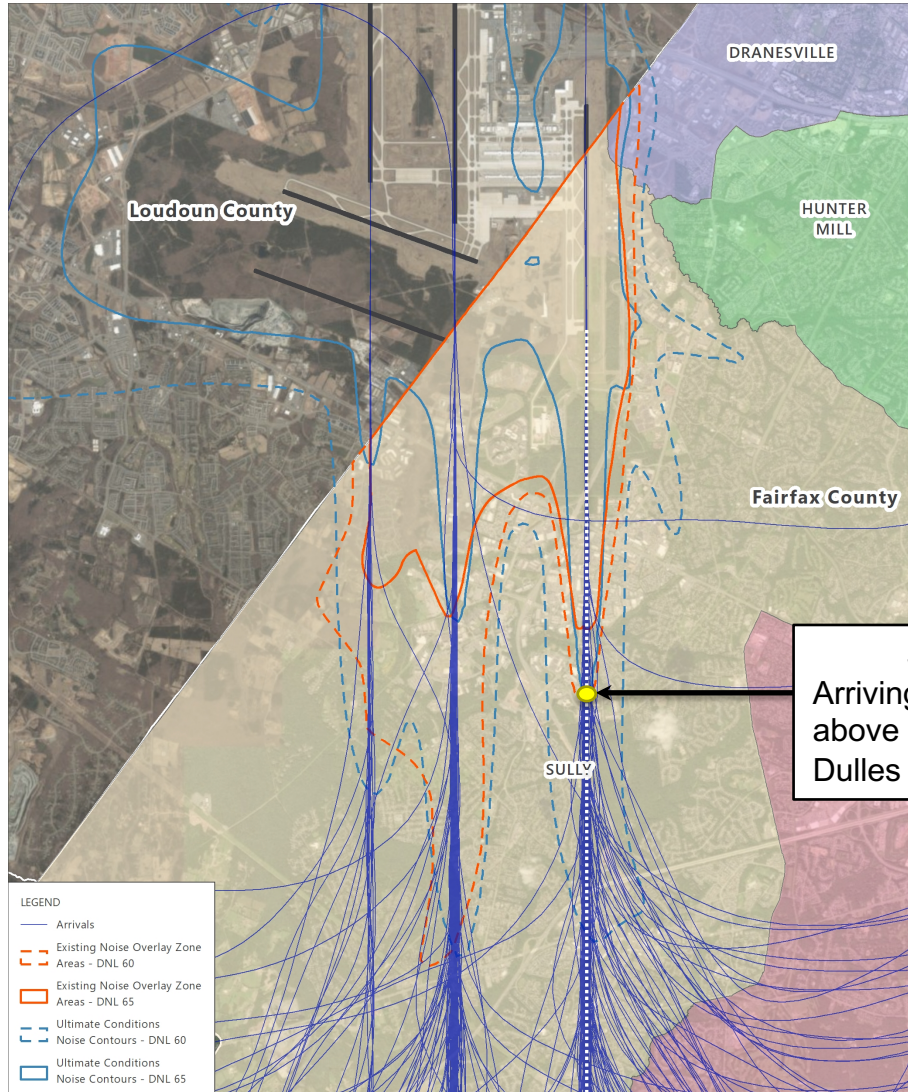
LAND UNIT J  
LOCATION AND COMPREHENSIVE PLAN MAP DESIGNATION

FIGURE 37





# Washington Dulles International Airport 60 & 65 DNL Contours with Arrival Paths in Relation to Stonebrook at Westfields.



**Stonebrook Project Site:**  
Arriving aircraft are typically 950 feet above the ground at this location. (1R Dulles Runway is closer to Project Site)

Source: Esri, DigitalGlobe, GeoEye, Earthstar Geographics, CNES/Airbus DS, USDA, USGS, AeroGRID, IGN, and the GIS User Community, May 2018 (aerial basemap); Fairfax County, Virginia, 2018 (airport impact overlay districts and county supervisor districts); HMMH, February 2019 (Ultimate Conditions contours).