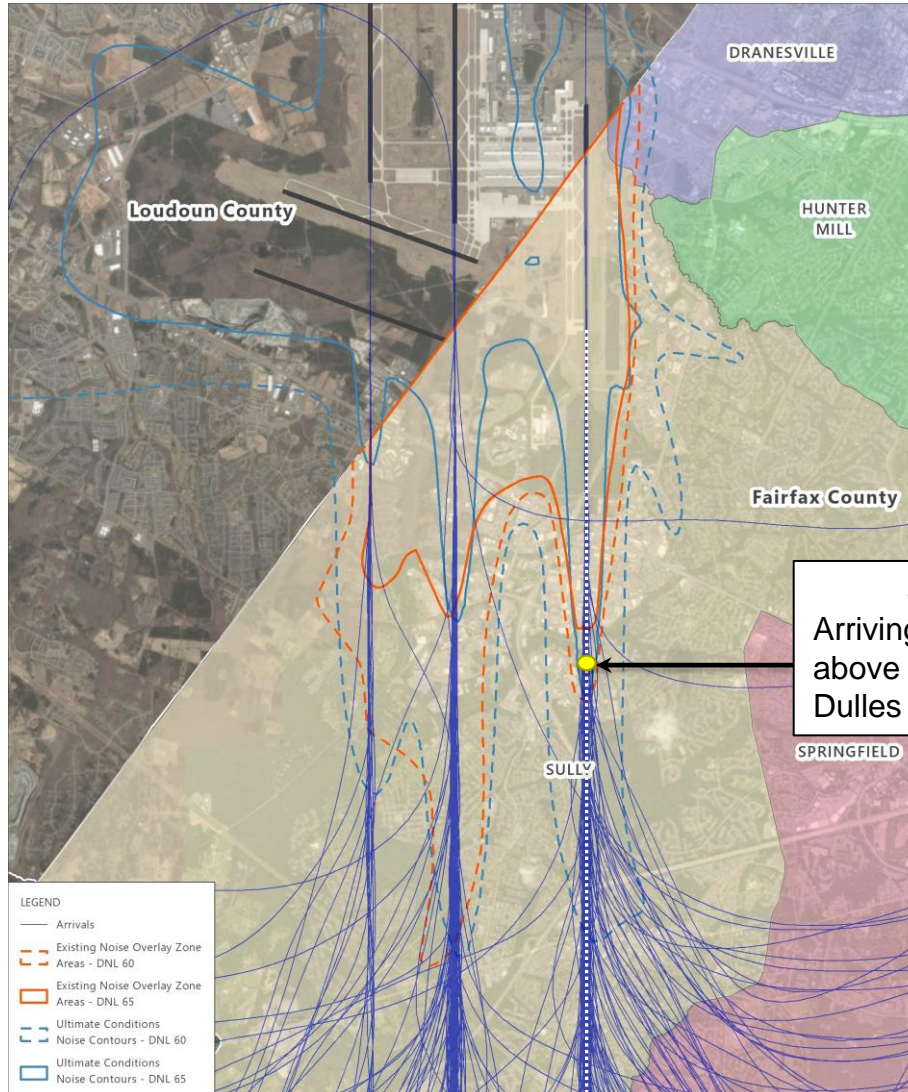




Washington Dulles International Airport 60 & 65 DNL Contours with Arrival Paths in Relation to Stonebrook at Westfields.



Stonebrook Project Site:
Arriving aircraft are typically 950 feet above the ground at this location. (1R Dulles Runway is closer to Project Site)

Source: Esri, DigitalGlobe, GeoEye, Earthstar Geographics, CNES/Airbus DS, USDA, USGS, AeroGRID, IGN, and the GIS User Community, May 2018 (aerial basemap); Fairfax County, Virginia, 2018 (airport impact overlay districts and county supervisor districts); HMMH, February 2019 (Ultimate Conditions contours).