



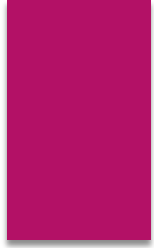
Recovery Innovations, Inc.

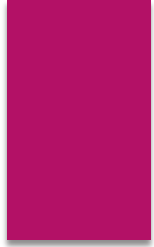
DBA

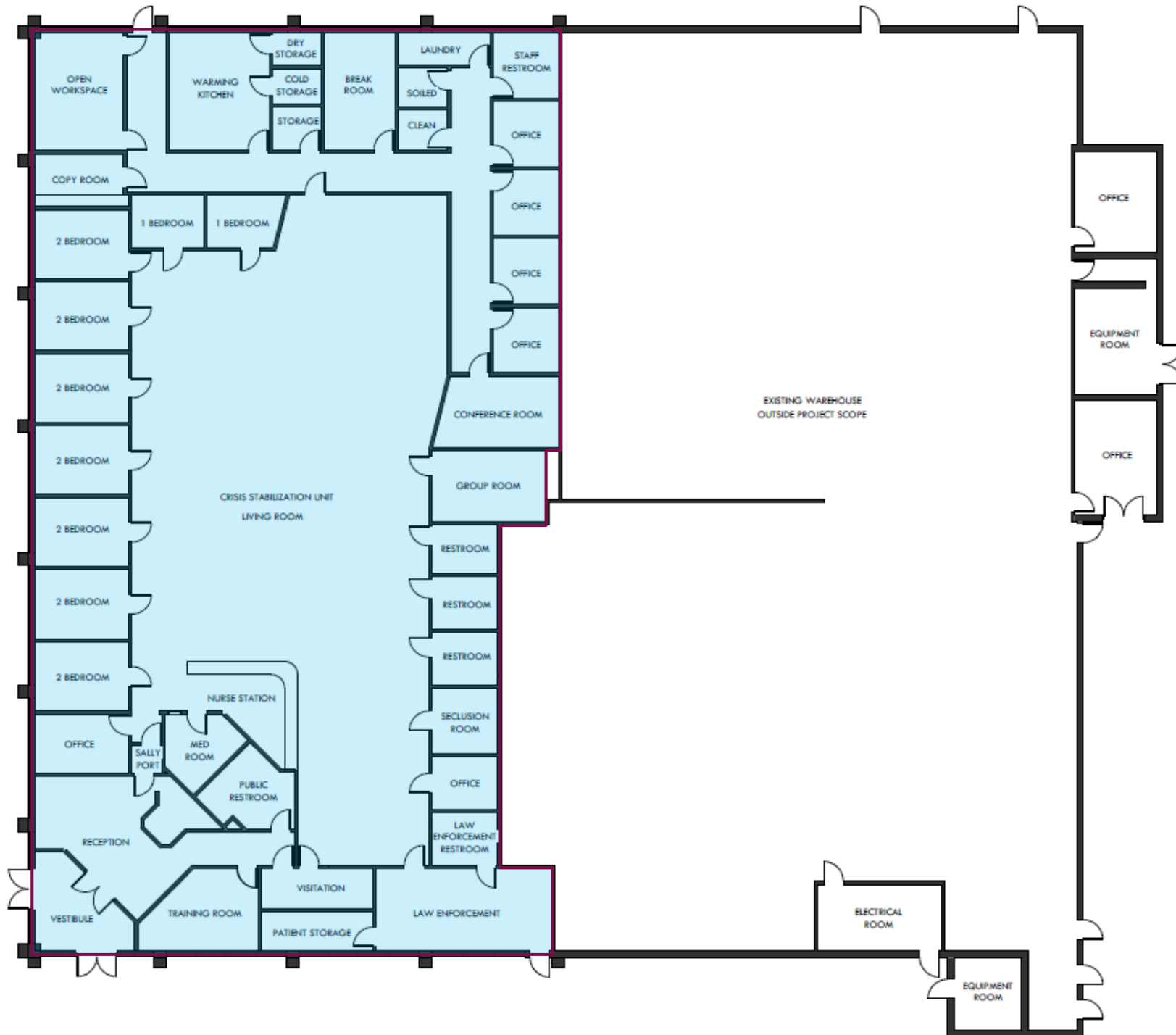
RI International

CRISIS STABILIZATION CENTER
14554 LEE ROAD
CHANTILLY, VIRGINIA









Transportation/Parking

- ▶ Required Parking: 32 Spaces
- ▶ Proposed/Existing Parking: 56 Spaces
- ▶ Trip Generation: Patients, Staff, and Deliveries
 - ▶ +1 trips in AM Peak Hour
 - ▶ +1 trips in PM Peak Hour
- ▶ By-Right Use (Office): 313 trips per day
- ▶ Crisis Stabilization Center: 164 trips per day
 - ▶ -145 daily trips

RI International History and Background

- ▶ RI International is an incorporated, non-profit behavioral health organization that has been providing a variety of crisis services, residential programs and outpatient programs internationally for the past 30 years.
- ▶ Currently, RI operates programs in Arizona, California, Delaware, North Carolina, Utah, Washington and New Zealand; with new programming starting in Louisiana, New Mexico, Ohio, Virginia and Australia.
- ▶ Our Core Mission is: ***Empowering people to recover, succeed in accomplishing their goals, find meaning and purpose in life, and reconnect with themselves and others.***
- ▶ These values of Hope, Wellness, Personal Responsibility, Community Focus and Empowerment are the basis for our work with adults who are experiencing co-occurring substance use and mental wellness challenges.
- ▶ These core values guide us in our vision of activating the next generation of frame-breaking health care innovation to support people beyond their substance use and behavioral health needs and succeed in the community where they live, work and play.

Chantilly Crisis Stabilization Center

14554 Lee Road

- ▶ Services and Hours of Operation
 - ▶ 24 hours a day / 7 days a week Crisis Stabilization Services to any adults 18 and older experiencing and mental health and/or substance use crisis.
 - ▶ Psychiatric (Psychiatrist and Nurse Practitioners), Nursing (RN's and LPN's), and clinical (licensed clinicians) care 24/7 with medication management as needed for individuals.
 - ▶ Peer Support Specialists are embedded in all of our programs as well to provide ongoing engagement, empowerment and connection for individuals.
 - ▶ Therapeutic Programming throughout the day to ensure individuals are working towards and meeting their treatment goals and return to the community.
 - ▶ Discharge planning from the time of admission to work through an individuals needs to stabilize and remain successful in the community.

Community Asset and Resource

- ▶ RI's goal is to develop and implement a program that is a long term community asset to help meet the needs of individuals in the community experiencing mental health and substance use challenges.
- ▶ Our facilities are warm and welcoming environments that offer safety and security as well with a highly qualified team of professionals to provide the highest quality of care.
- ▶ Our facilities are secure locked facilities and discharge planning is arranged with appropriate parties involved prior to discharge and/or RI assists individuals with transportation to ensure they can safely arrive at their destination.
- ▶ We intend to locally recruit and employ an estimated 35 employees in a variety of positions, which we hope will add value to the local communities.

Contracts and Funding

Contracts and Funding

- ▶ RI has currently been contracted with the Region 2 Community Service Boards for start up funding and funding for the uninsured populations to provide this service.
- ▶ In addition, RI will contract with the variety of Managed Care Organizations (MOC's) in Virginia.
- ▶ We currently have contracts with a few of these MCO's throughout our work in other states and will finalize contracts with the MCO's that are new to our services in this area.

Estimated Operating Budget Year 1

Expenses		
Salaries and Wages	\$2,501,723	Estimated 35 employees
Other Program Expenses	\$2,256,790	Rent and Supplies
Est. Total Program Exp.	\$4,758,513	
Potential Revenue		
Est. Medicaid Revenue	\$3,333,166	MCO Contracts
Uninsured Revenue	\$1,900,000	RFP Contract Award with CSBs
Est. Total Revenue	\$4,758,513	

Thank you!

RI International

Amy Pugsley, MA, CHC
VP of East Operations

amy.pugsley@riinternational.com

Thomas Castellanos
Chief Financial Officer

thomas.castellanos@riinternational.com

Kimley-Horn and Associates

Ross Stevens

ross.stevens@kimley-horn.com

Caycee Hart

caycee.hart@kimley-horn.com

Andy Smith

andy.smith@kimley-horn.com

Architectural Resource Team

Dev Pawar

dpawar@art-team.com

Bridget Gesser

bgesser@art-team.com

Questions?

