

Stealth Bell Tower

AT&T Telecommunication Facility



Centreville United Methodist Church
6400 Old Centreville Road, Centreville, Virginia 20121



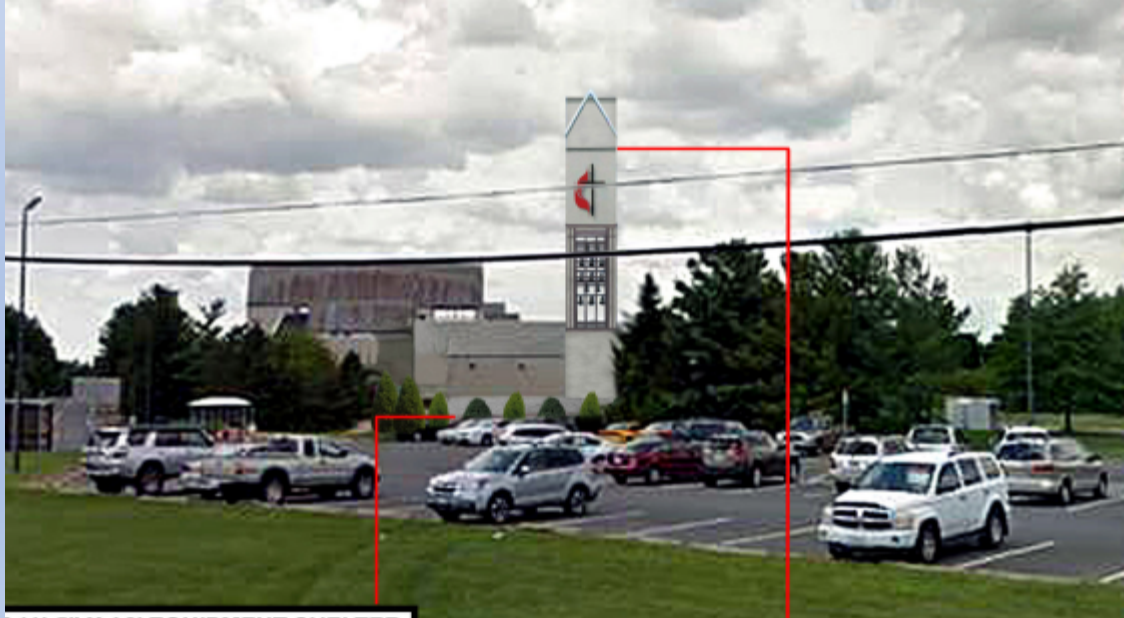
AT&T

Team Members on Today's Call

- Doug Sampson, Saul Ewing Arnstein & Lehr LLP (Outside Counsel)
- Allison Helowicz, SmartLink LLC (Project Management)

Introduction

- AT&T is excited to bring new and improved wireless services, including FirstNet and space for additional wireless providers.
- Bell tower adjacent to Centreville United Methodist Church.
- Stealth design minimizes visual impact and blends into community.
- Accommodates antennas for AT&T and two additional wireless providers.
- Will comply with all federal, state, and local laws and regulations.



Goals

- Reliable wireless services in and around Centreville.
- Enhanced emergency and non-emergency wireless access and services.
- Part of FirstNet: Network access for first responders and public safety.
- Reliable services that support the ongoing, increased wireless usage, including:
 - Working from home;
 - In class and virtual learning for schools;
 - Telehealth;
 - Online worship services;
 - WebEx, Microsoft Teams, Zoom and other virtual meetings.



- Federal government exclusive contract with AT&T.
- Dedicated network access and bandwidth for first responders.
- Deployable assets boost coverage where needed.
- More than 13,000 federal, state and local agencies:
 - FEMA
 - Department of the Army
 - Department of the Navy
 - Federal Bureau of Investigation
 - D.C. Homeland Security and Emergency Management Agency
 - D.C. Metro Police
- Over 1.5 million daily connections to respond to emergencies.

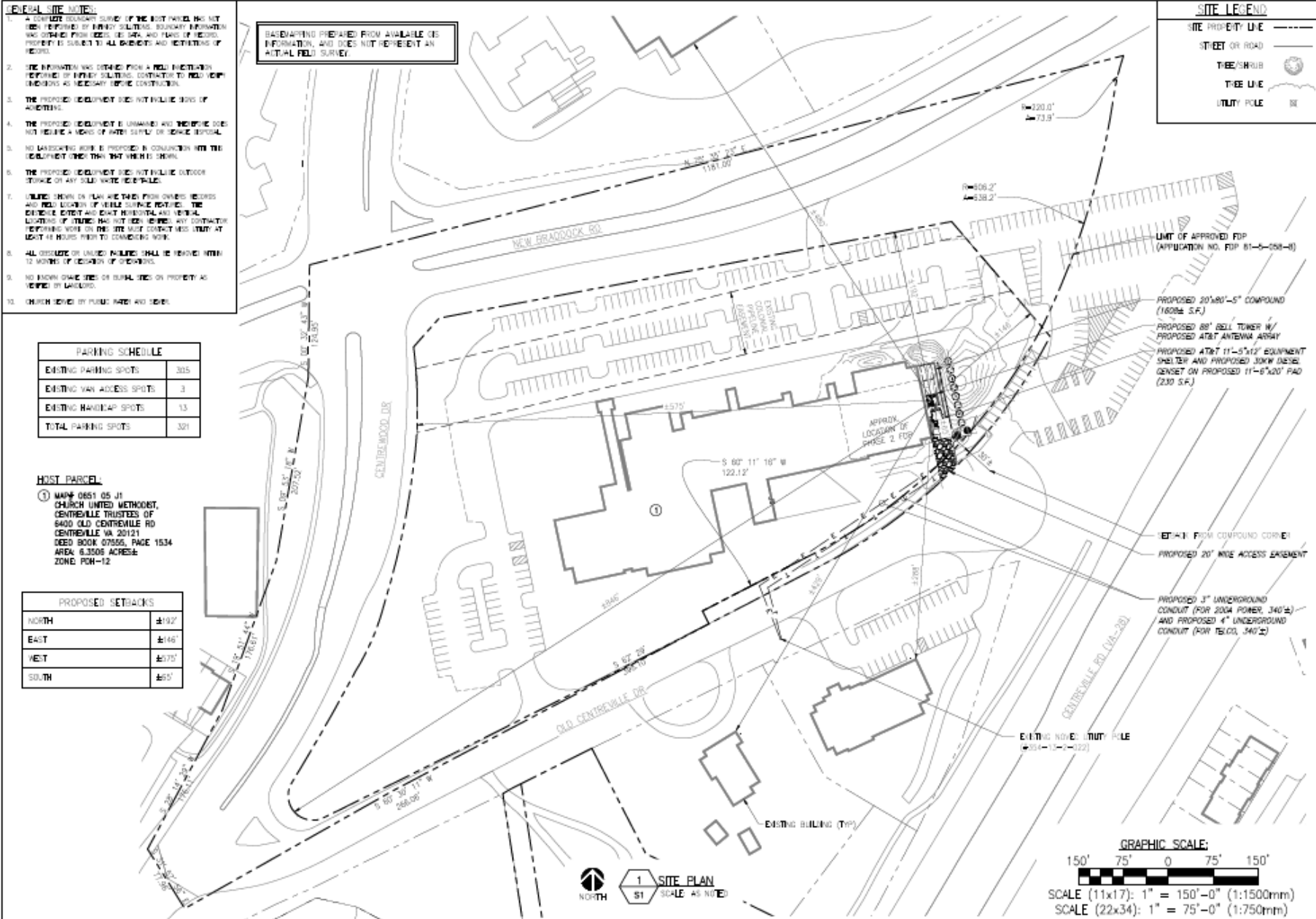
Overhead View



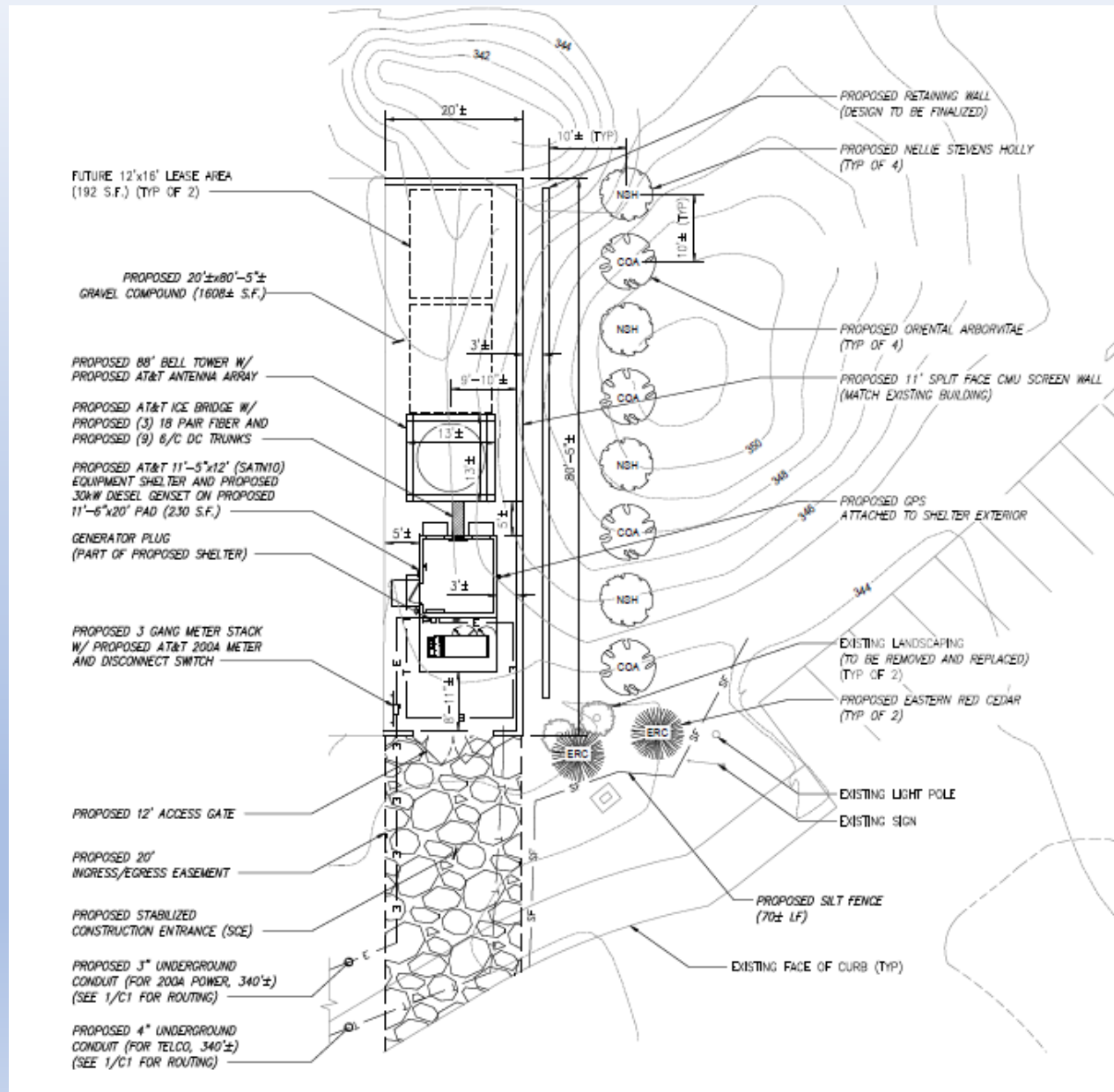
No Impact on Local Traffic

- Unmanned facility, primarily managed remotely.
- Approximately 3-4 visits per year by technician.
- Standard vehicle.
- Facility access off existing cul-de-sac avoids any entrance or exit from main streets or thoroughfares.

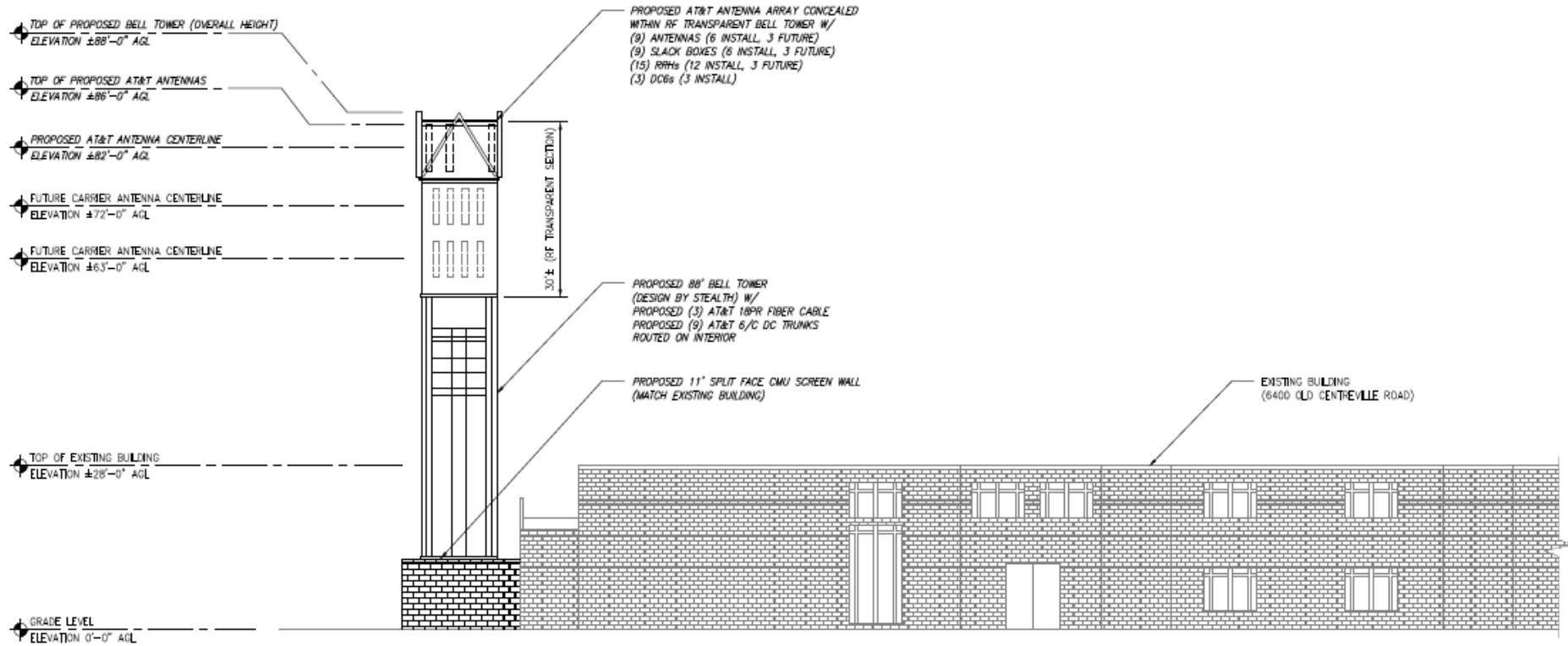
Site Plan



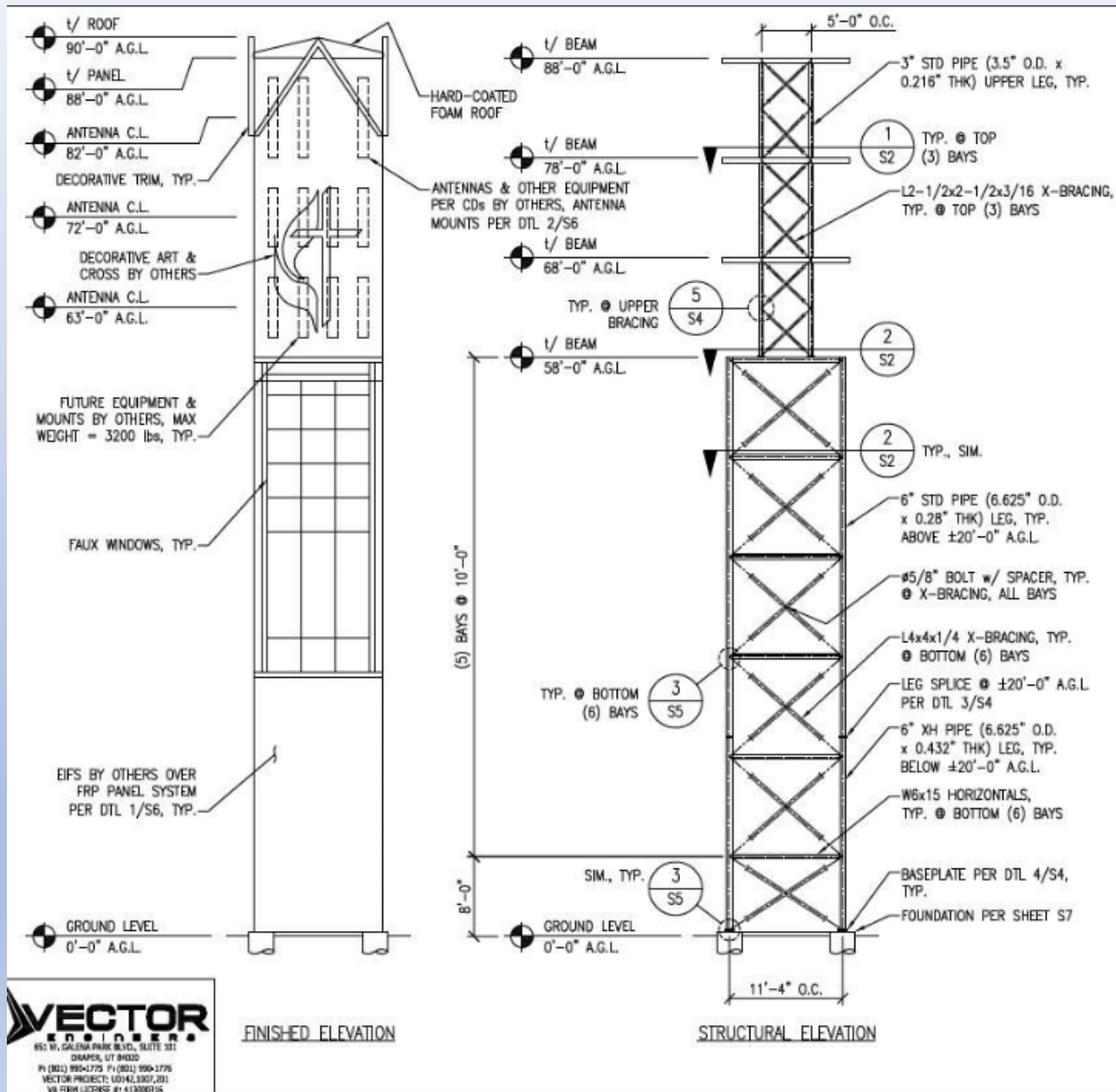
Compound Plan



Elevation View



Elevation View

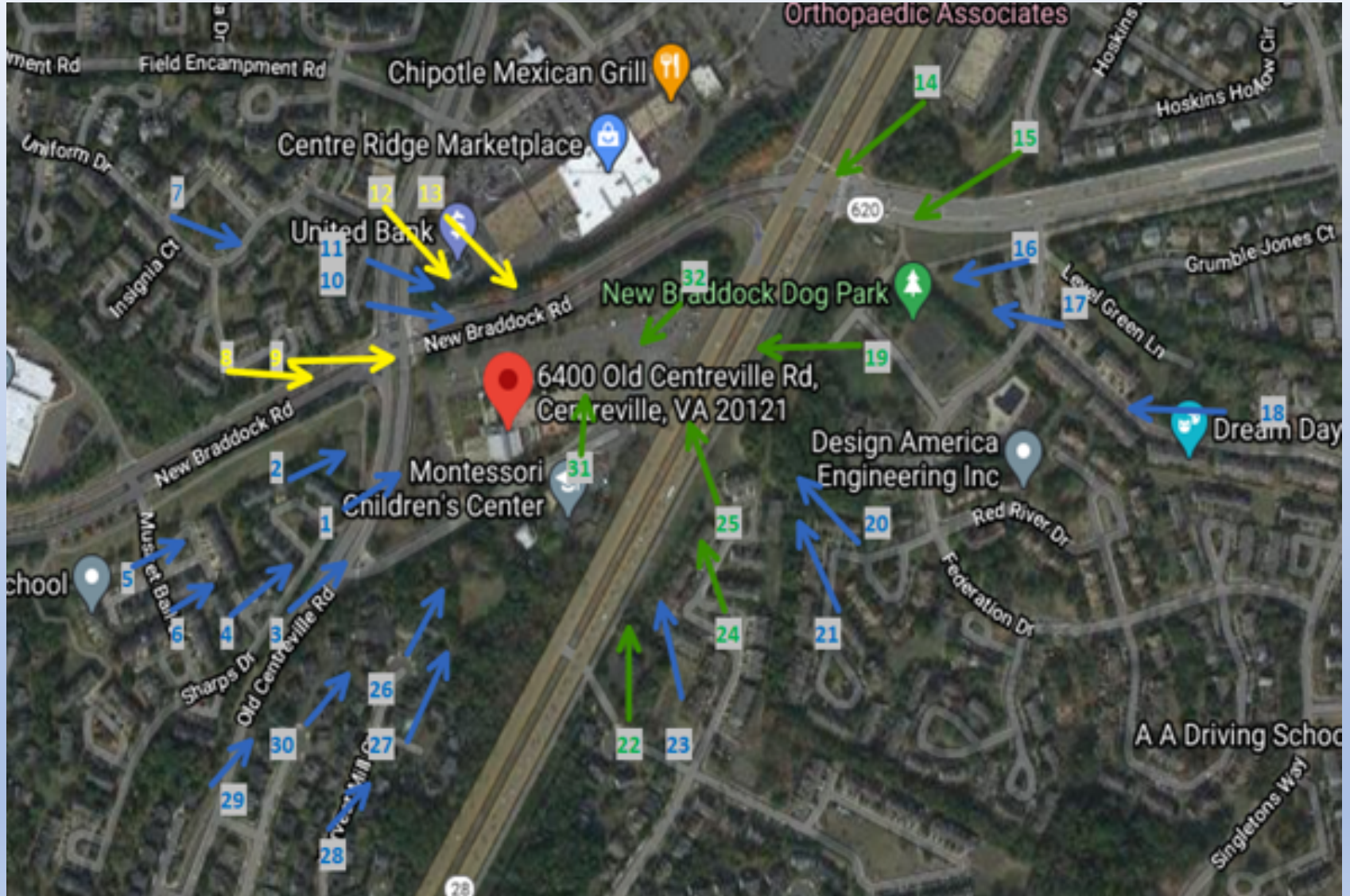


Balloon Test & Visual Impact Survey

- January 9, 2021 from 9:00 a.m. until 1:00 p.m.
- Balloon (approx. 3' diameter) flown at 88 feet at the bell tower location.
- Photos from 32 separate locations surrounding the pole's new location.
- Minimal visibility from surrounding neighborhoods because of topography, tree cover, and existing buildings.
- Of 32 photo locations the visual impact survey indicated:
 - Not visible from 20;
 - Visible from 8 vantage points;
 - Partially visible from 4.

Visual Impact Survey Overview

January 9, 2021



Blue- Not Visible

Yellow- Partially Visible

Green- Visible

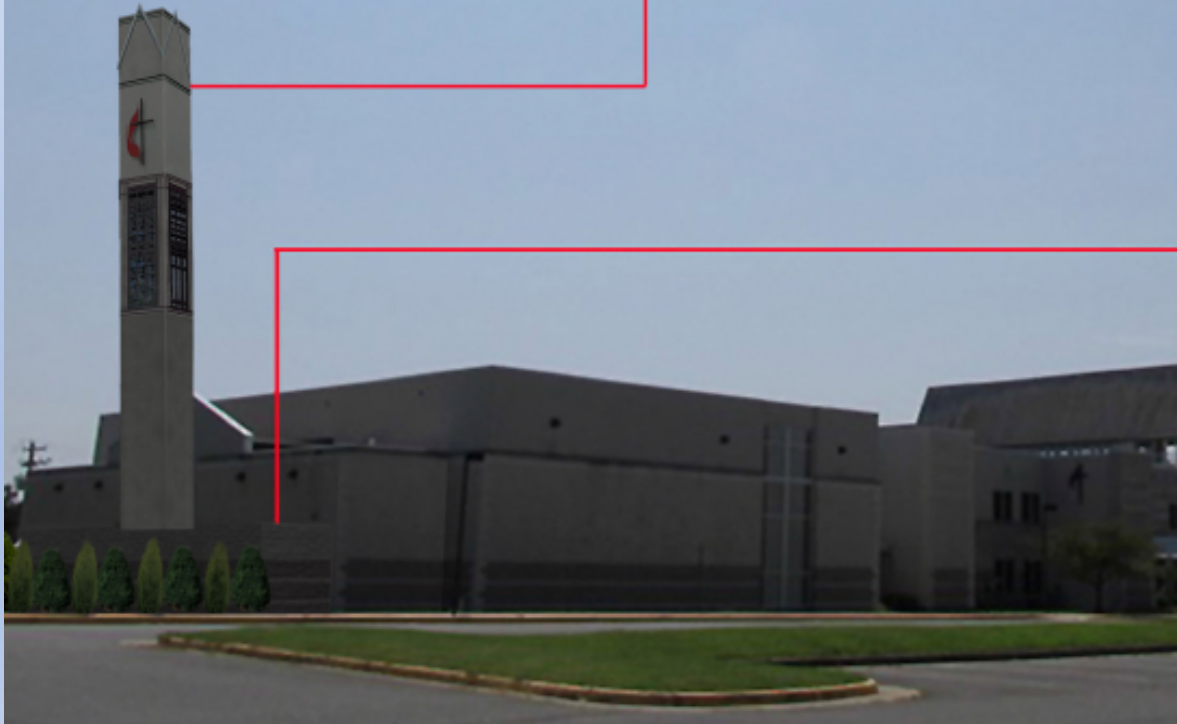
Visual Impact Survey Overview

- Photos Simulations from January 9, 2021 balloon test are not available yet.
- They will be provided in updated application materials to Fairfax County Zoning Department.
- Original zoning application included accurate engineer renderings of the proposed bell tower.

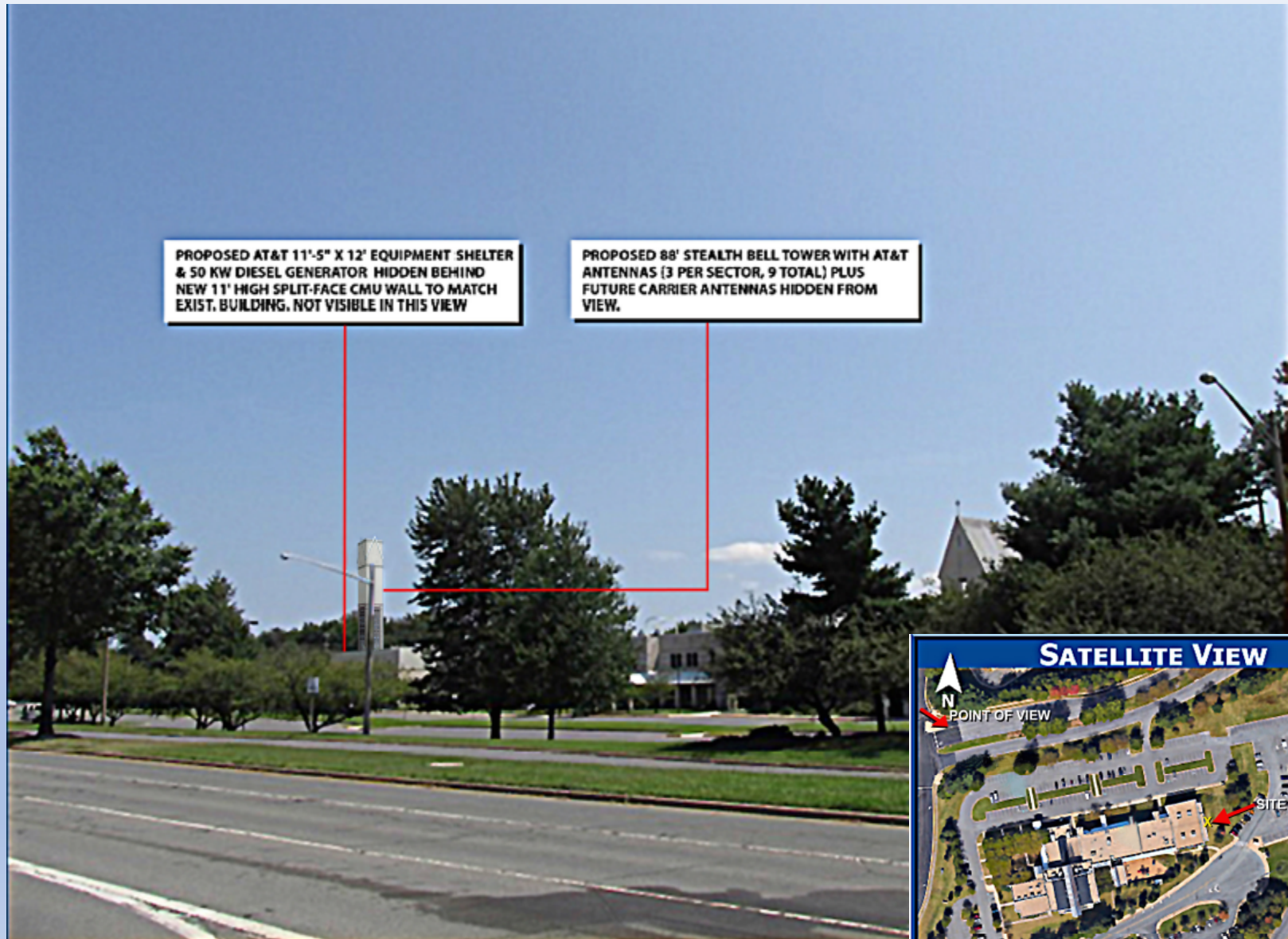
Bell Tower Simulation #1

PROPOSED 88' STEALTH BELL TOWER WITH AT&T ANTENNAS (3 PER SECTOR, 9 TOTAL) PLUS FUTURE CARRIER ANTENNAS HIDDEN FROM VIEW.

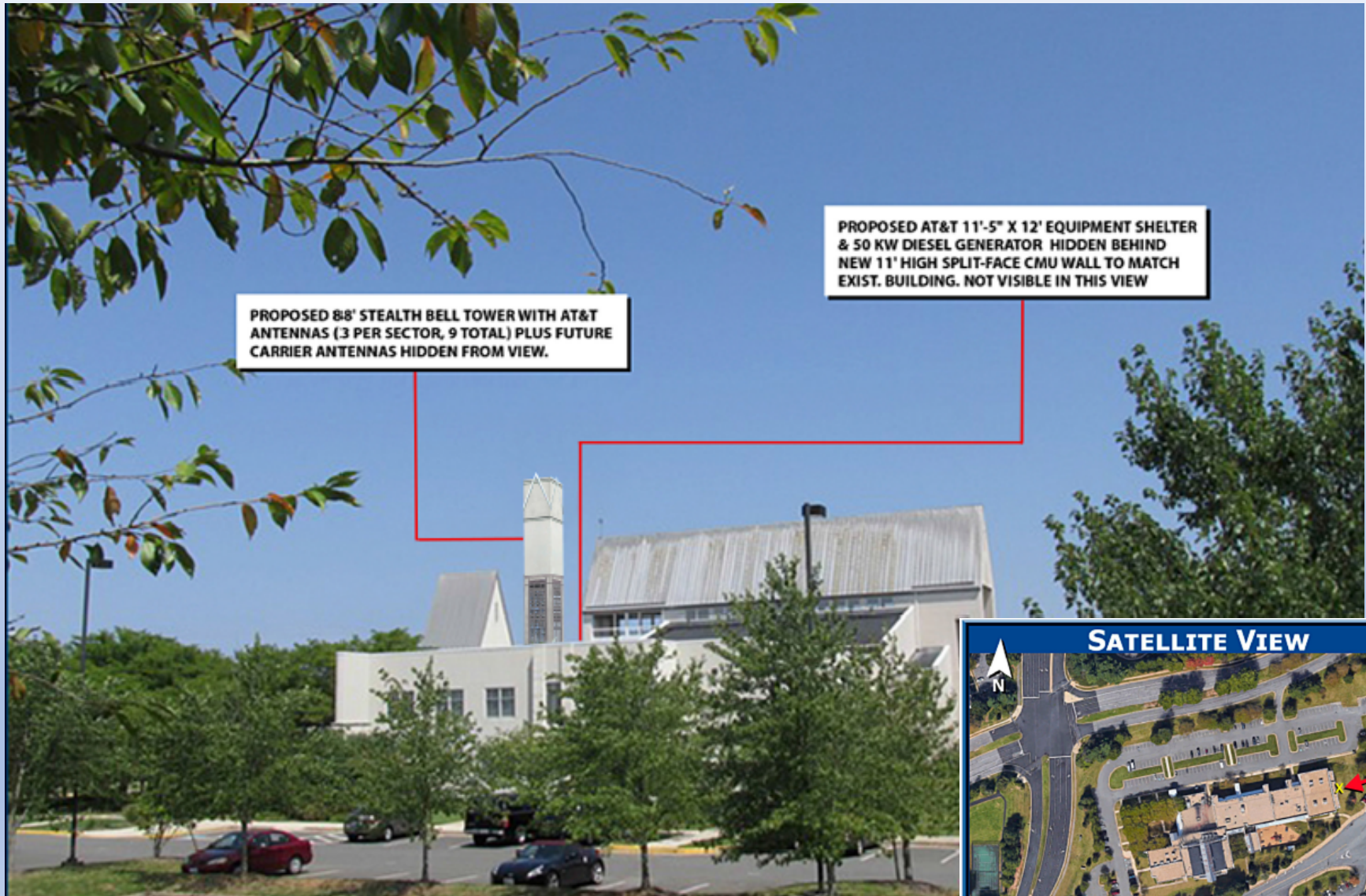
PROPOSED AT&T 11'-5" X 12' EQUIPMENT SHELTER & 50 KW DIESEL GENERATOR HIDDEN BEHIND NEW 11' HIGH SPLIT-FACE CMU WALL TO MATCH EXIST. BUILDING



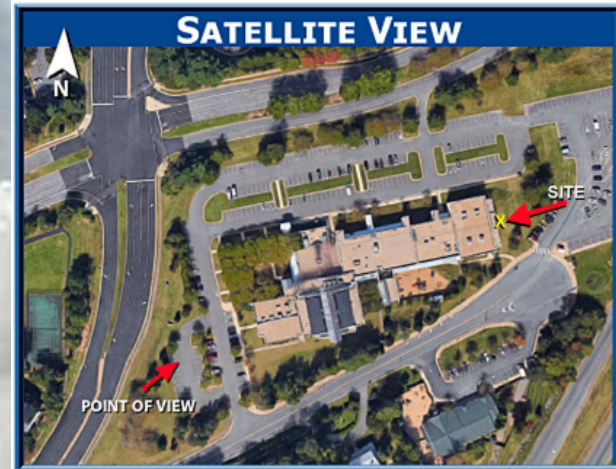
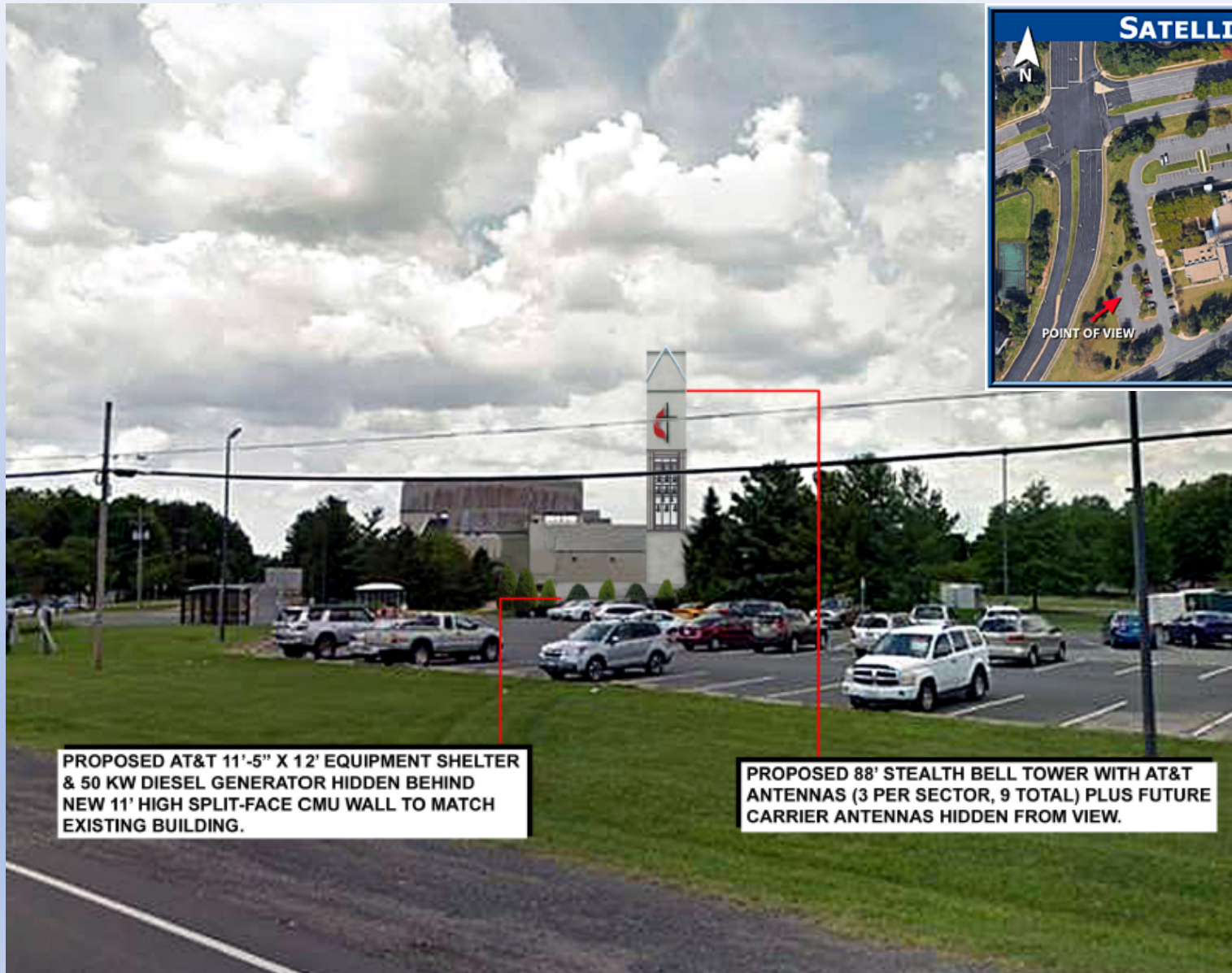
Bell Tower Simulation #2



Bell Tower Simulation #3



Bell Tower Simulation #4



Bell Tower Simulation #5



THANK YOU!