



THUNDERBOLT PLACE
PARKWAY STREET (N.W.)

Agape House Chantilly

Affordable Senior Living 3870 Centerview Drive

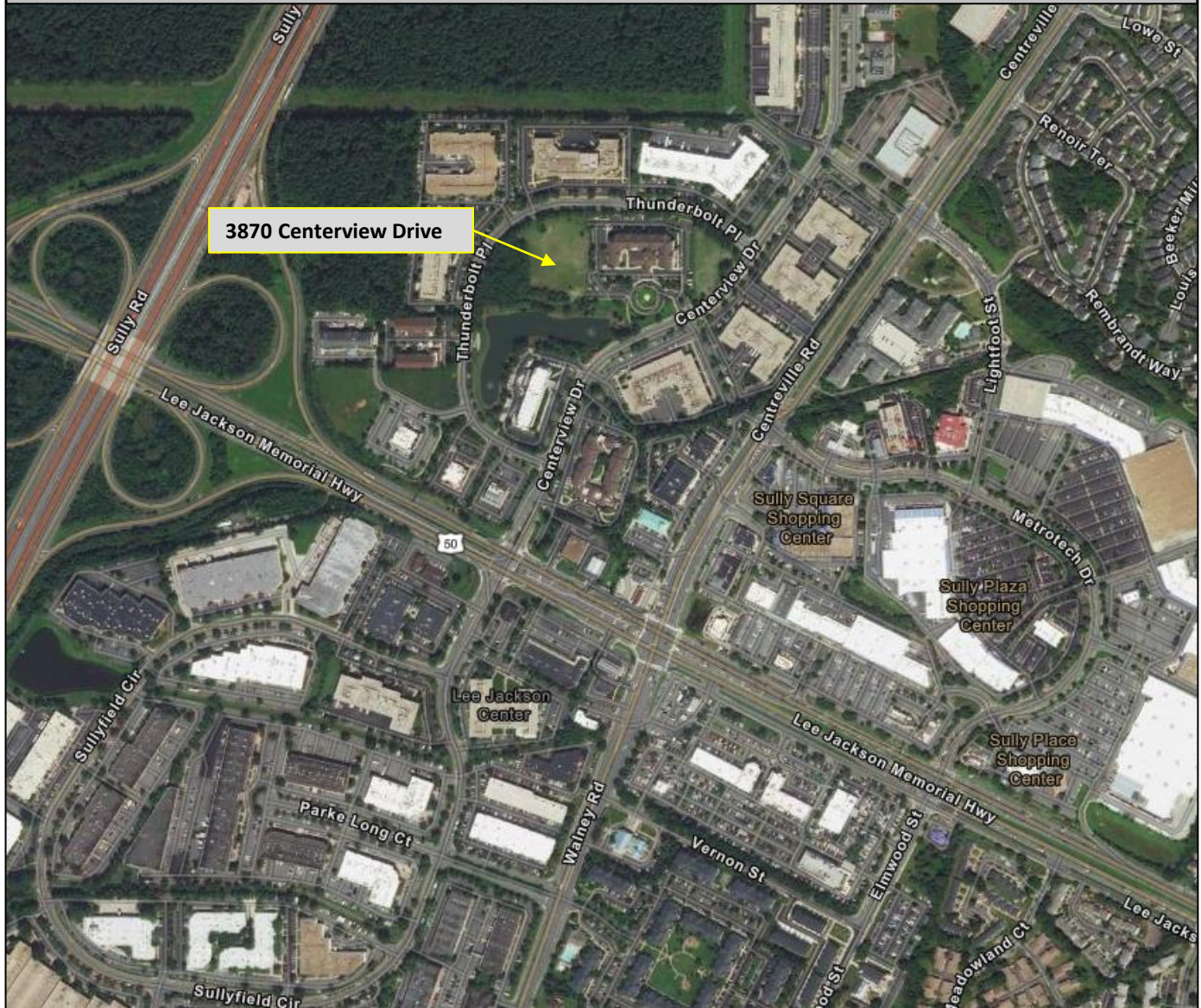
NOMINATION SU-001

Agape Health Management, Inc.

- Founded in 2006
- Family-owned Business
 - Mr. Daniel Dongchul Choi
 - Jeounghee Choi, licensed pharmacist
- Owns and operates three Adult Day Care Centers
 - Alexandria
 - Vienna
 - Chantilly
- Owns 30 Vans for transportation services to facilities



Aerial Context

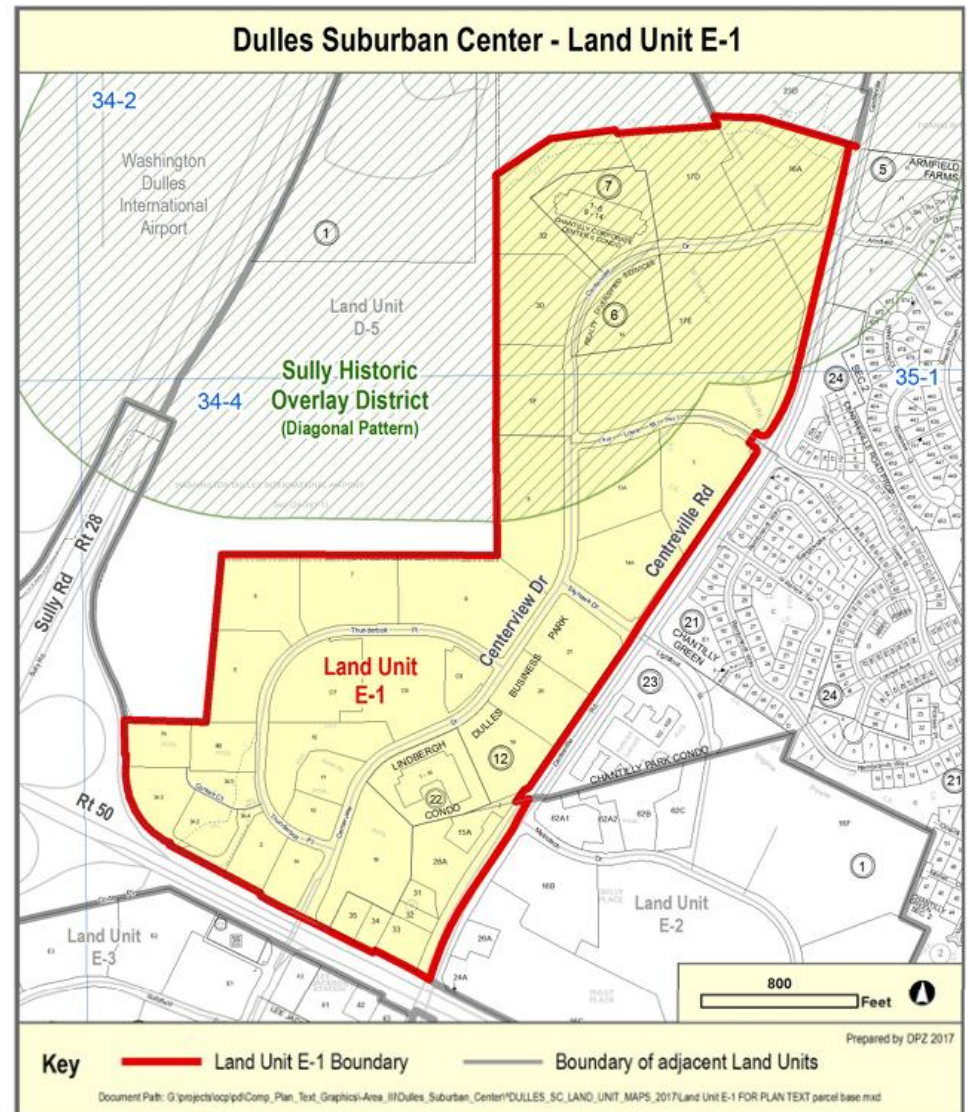


Existing Conditions



Comprehensive Plan

- Current Recommendation:
 - Campus-style office and industrial-flex use up to .35 FAR
- Proposed SSPA Nomination:
 - Additional option for independent living use, continuing care facility use, and/or other senior living uses to include up to 250 senior living apartment units and supportive amenities and services, which may include but not be limited to an adult day care center. The senior living apartments should be made affordable such that all of the units are reserved at 60% AMI or lower.



Proposed Senior Living Facility

- ~178,500 SF GFA
- 5 stories plus partial basement
- Up to 250 affordable rental apartments
 - 600-670 SF/unit
 - 1-br with bathroom and kitchen
 - IL/AL mix
- All units reserved at 60% AMI
- Universal Design features



Range of Medical Care Facilities and Onsite Amenities

- Pharmacy
- Visiting doctor's office
- Physical therapy room
- Computer/arts rooms
- Fitness areas
- Dining room / community kitchen
- Adult day care
- Open space / garden areas



Supportive Services

- In-home care
- Nursing/supervision
- Medication management
- Housekeeping
- Social work
- Personal assistant services
- Transportation services





NORTH ELEVATION



EAST ELEVATION

NOTE: FOR ILLUSTRATIVE PURPOSES ONLY

Summary of Benefits

- Significant infusion of affordable housing units into Chantilly.
- New senior living opportunities with supportive amenities and services.
- Reduction in peak-hour vehicle trips.
- Productive use for vacant property.
- Compatible with surrounding uses.
- New customers for surrounding businesses.
- New job opportunities.
- Diversify mix of uses for greater viability.
- Support from Dulles Business Park.

An aerial photograph of a residential development. The central focus is a large, multi-story building with a complex footprint, surrounded by extensive parking areas and landscaped green spaces with trees and shrubs. The surrounding area includes other residential buildings and streets. The text is overlaid on the image in white, with a thin white horizontal line separating the main title from the nomination number.

Agape House Chantilly

Affordable Senior Living 3870 Centerview Drive

NOMINATION SU-001