

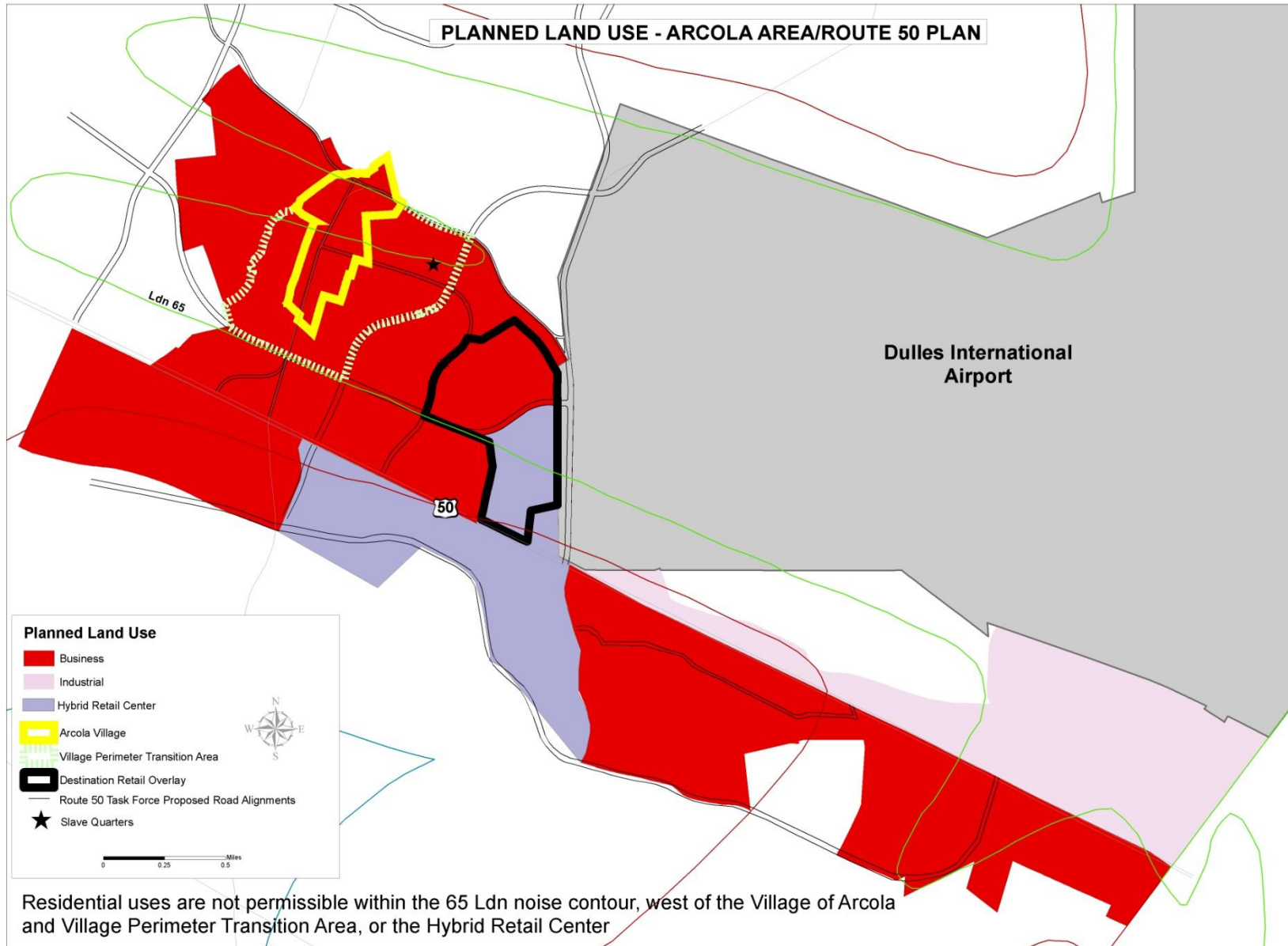
Sully District Council Meeting

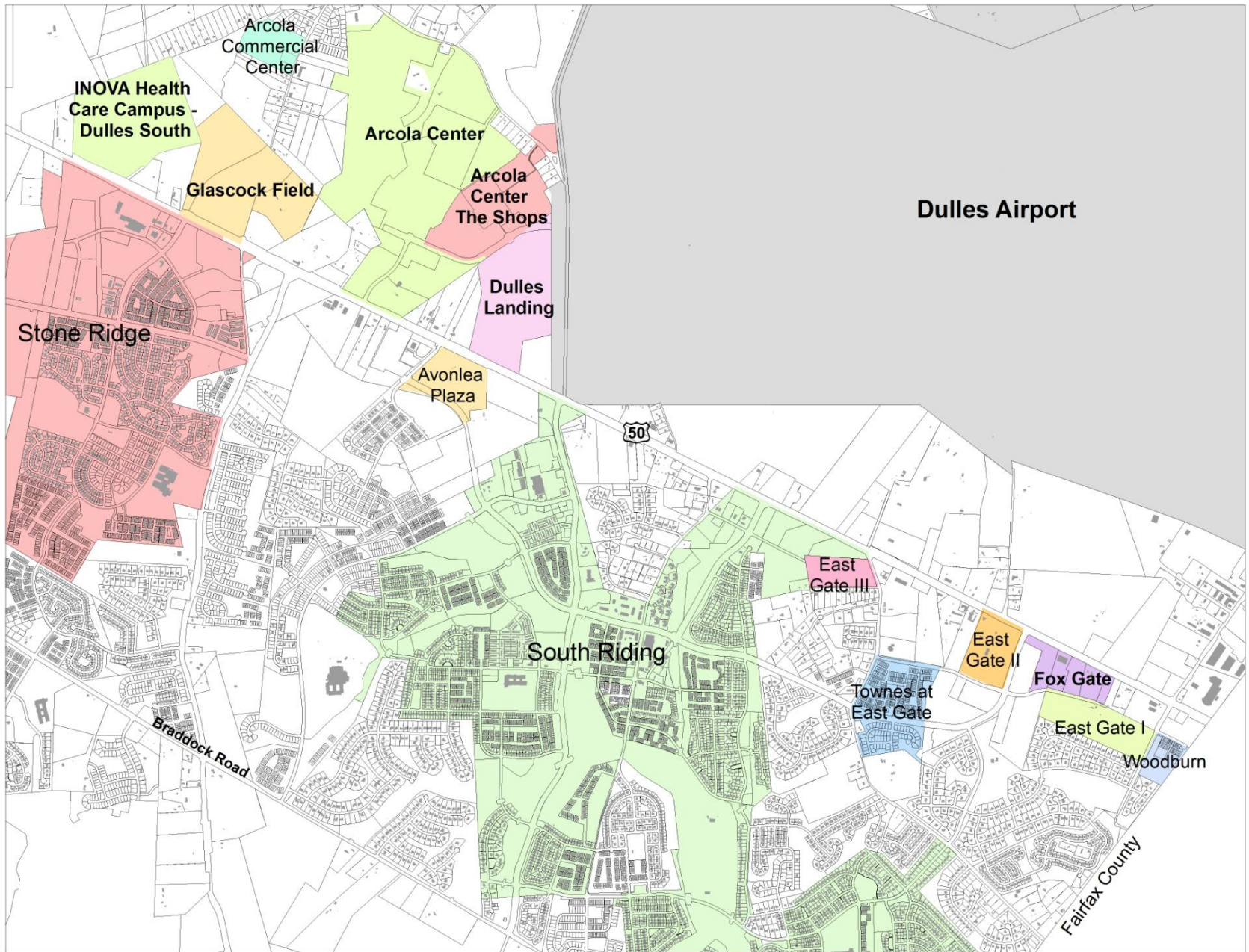
November 16, 2011

Overview of Development in Loudoun County

- Route 50 Corridor
- Loudoun County Parkway
- Route 28 Corridor
- Dulles Rail

PLANNED LAND USE - ARCOLA AREA/ROUTE 50 PLAN





REVISED 2030 COUNTYWIDE TRANSPORTATION PLAN

ADOPTED JUNE 15, 2010 AMENDED THROUGH JANUARY 19, 2011 CPAM 2010-0001

LEGEND

ROADWAY ELEMENTS

CTP ROADS



2030 PLANNED # OF LANES

- 10 LANES
- 8 LANES
- 6 LANES
- 4 LANES
- 3 LANES
- 2 LANES
- FREEWAY
- CONCEPTUAL CORRIDORS

(See Note 5: Color indicates Number of Lanes)

- EXISTING/PLANNED INTERCHANGE
- EXISTING/PLANNED ROUNDABOUT
- VIRGINIA SCENIC BYWAY
- PROPOSED SCENIC BYWAY

ULTIMATE ROADWAY GEOMETRY

- U = URBAN (Curb & Gutter)
- R = RURAL (Shoulder & Ditch)
- 4 LANES IN 120' RIGHT OF WAY OR
- 6 LANES IN 200' RIGHT OF WAY
- M = MEDIAN DIVIDED
- 2 3 4 6 8 10 = TOTAL # OF LANES

TRANSIT ELEMENTS

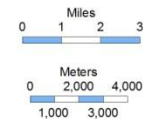
- PROPOSED METRORAIL ALIGNMENT
- EXISTING/PLANNED METRORAIL STATIONS
- W&OD TRAIL
- EXISTING POWER LINES

Suburban Policy Area Communities, Transition Policy Area and Town Joint Land Management Areas (JLMA) are shown with shaded backgrounds.

WASHINGTON DULLES
INTERNATIONAL AIRPORT

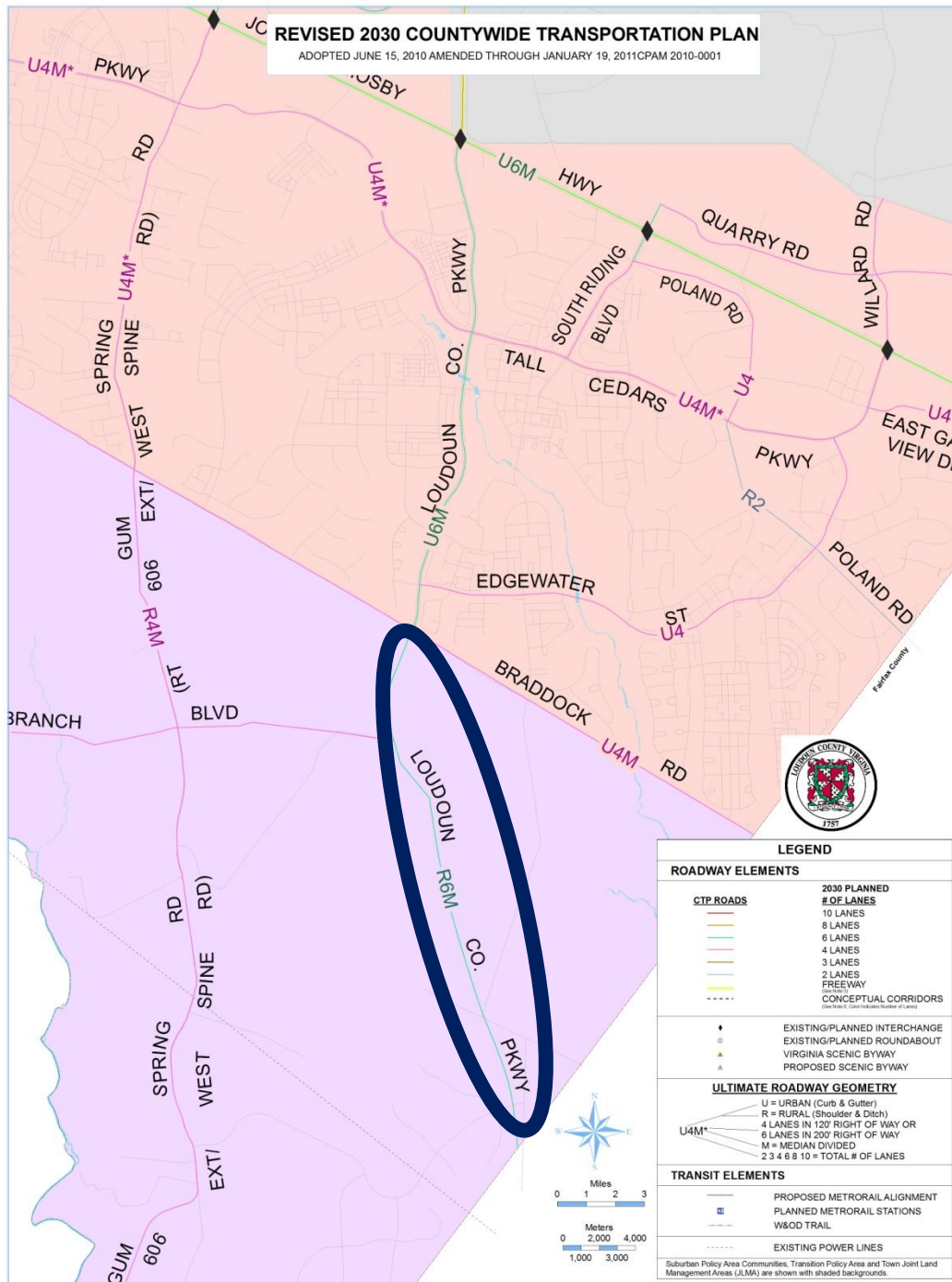
Functionality of planned interchanges
within the Route 50 limited access corridor
between Loudoun County Parkway and North
Star Boulevard to be reviewed by later study.

Grade separated options at the
intersection of Route 50
and Route 609 to be explored by
a later study.

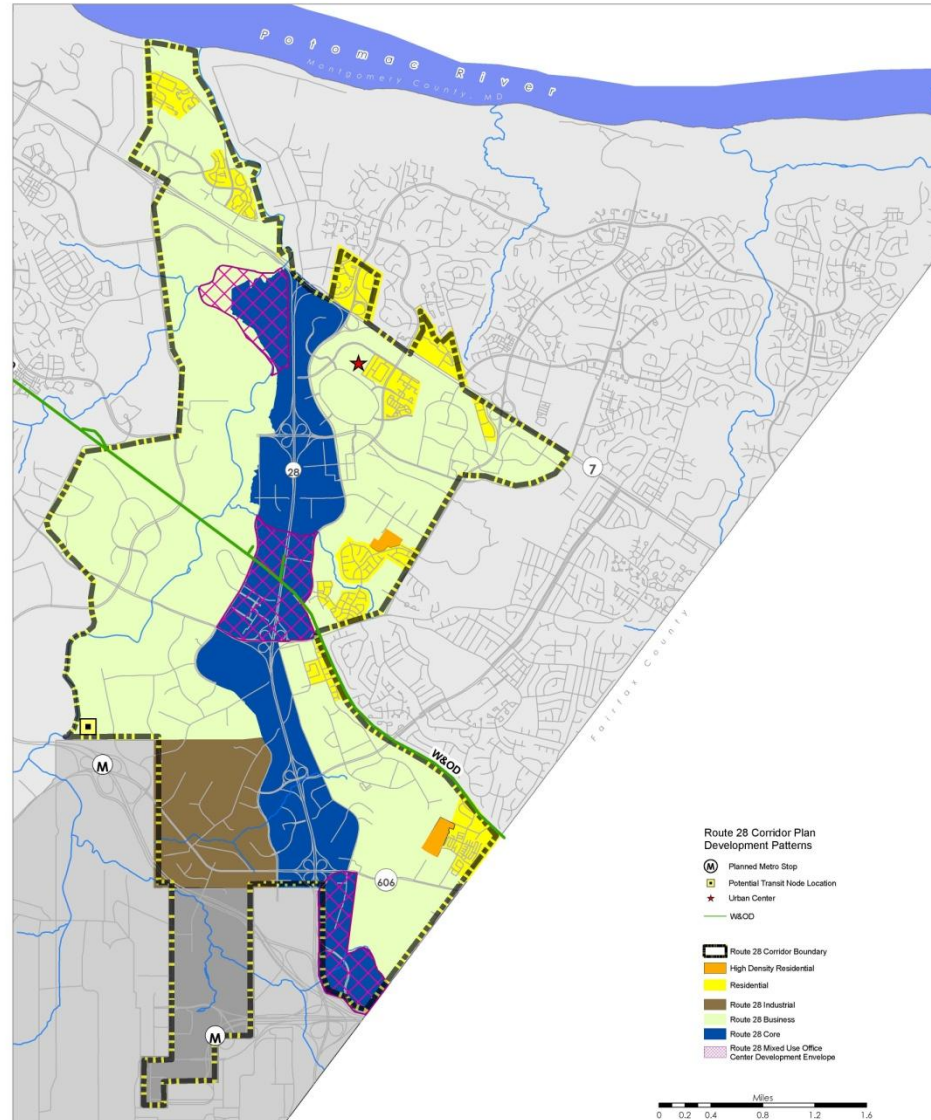


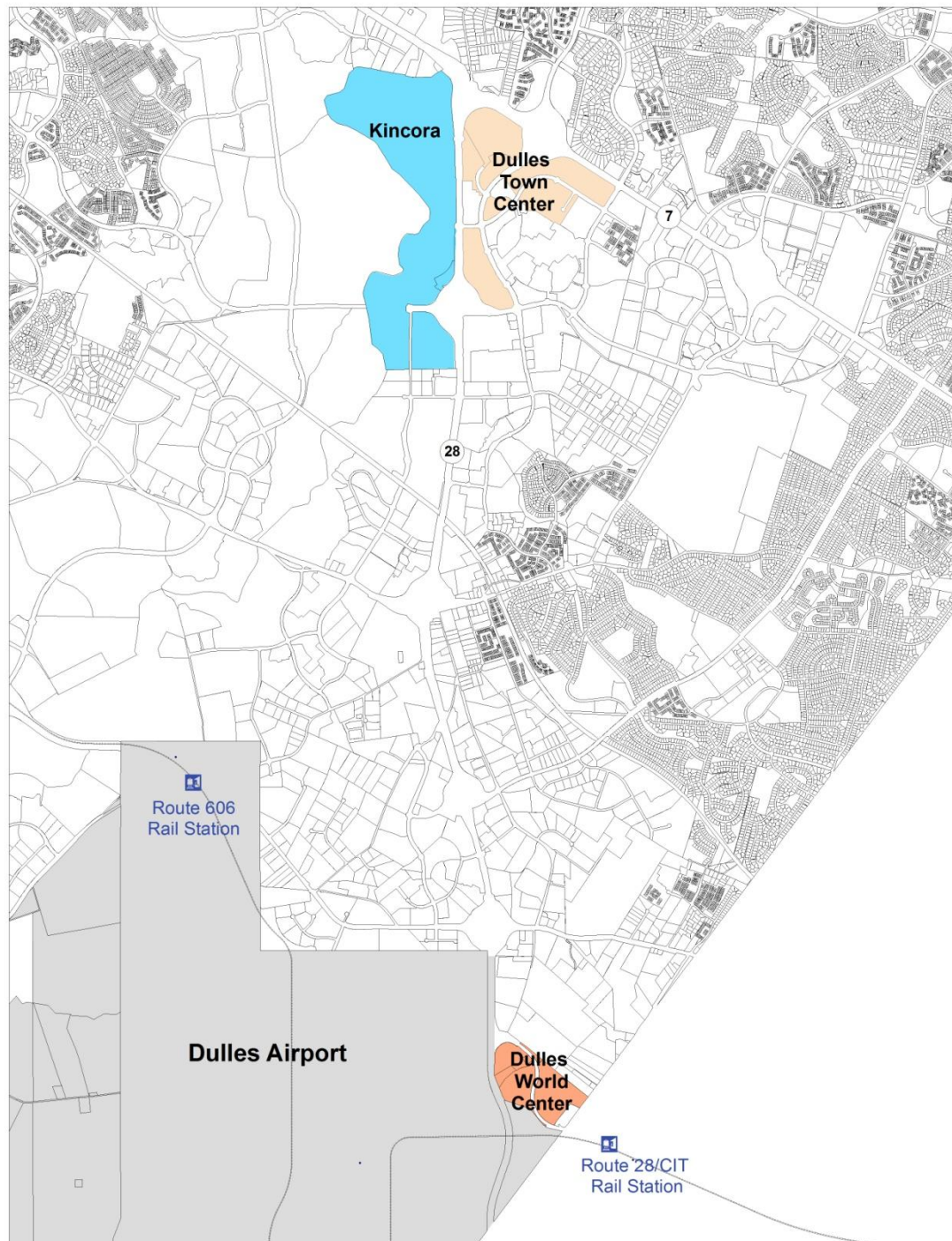
REVISED 2030 COUNTYWIDE TRANSPORTATION PLAN

ADOPTED JUNE 15, 2010 AMENDED THROUGH JANUARY 19, 2011 CPAM 2010-0001



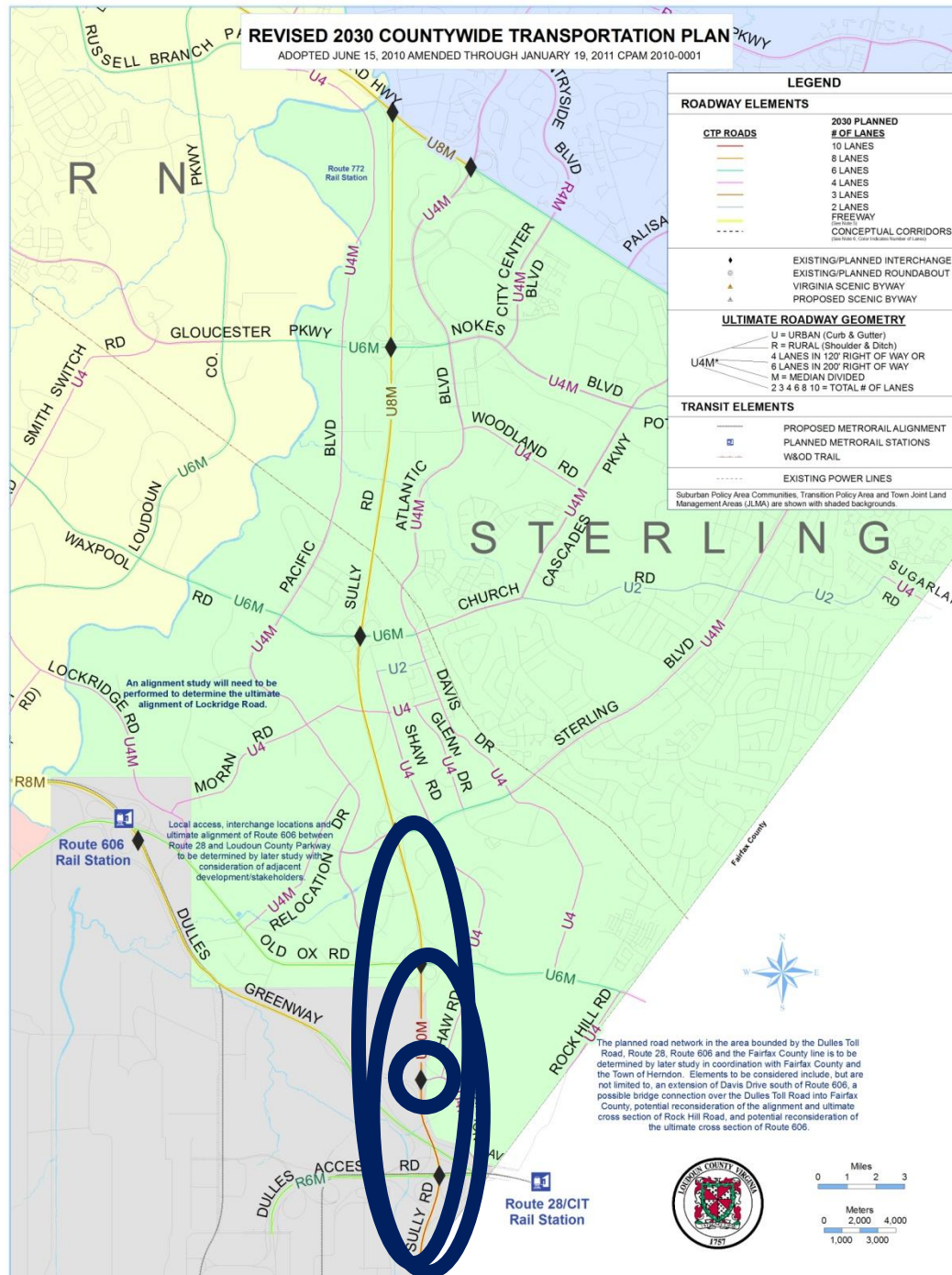
Route 28 Corridor Plan Land Development Patterns





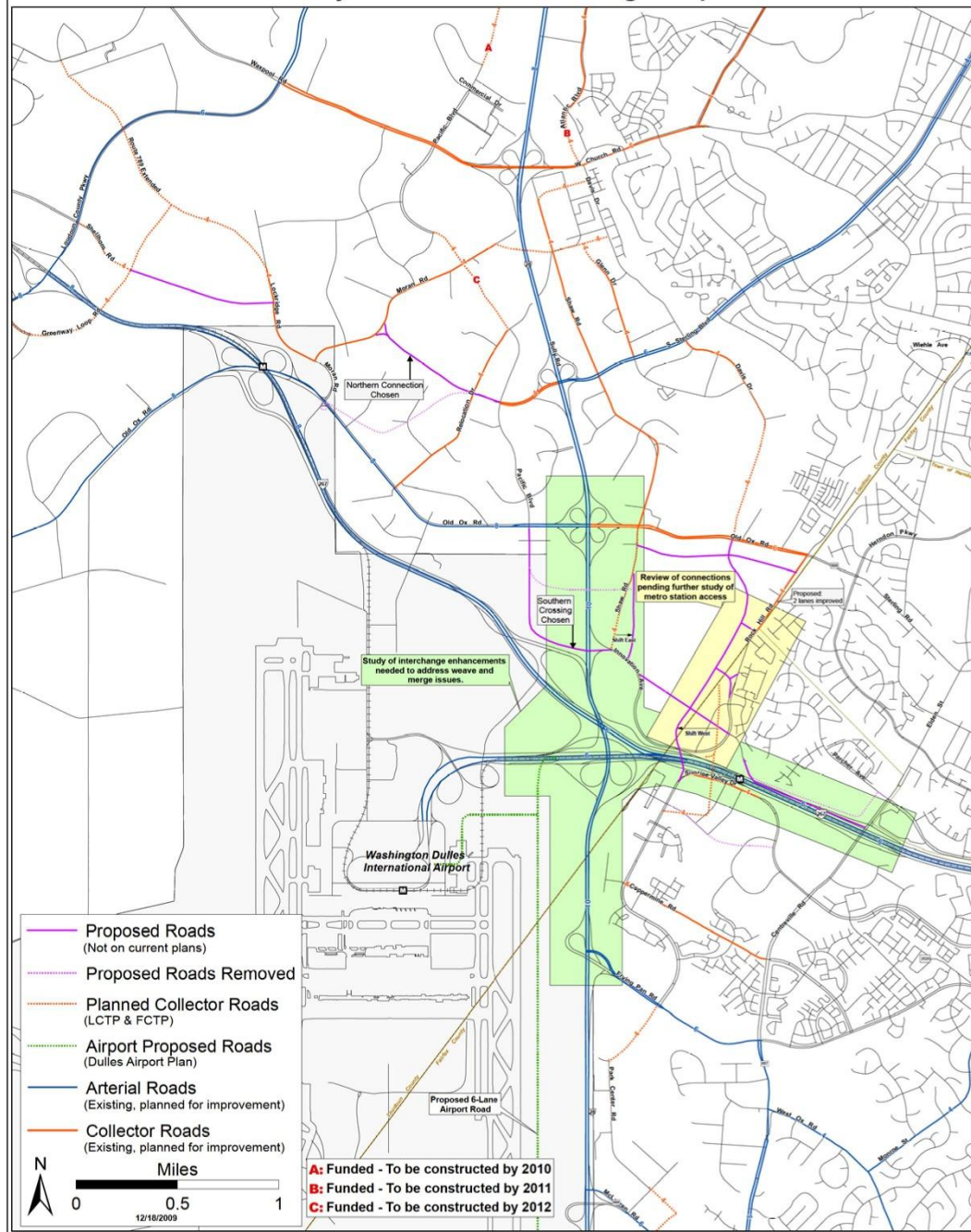
REVISED 2030 COUNTYWIDE TRANSPORTATION PLAN

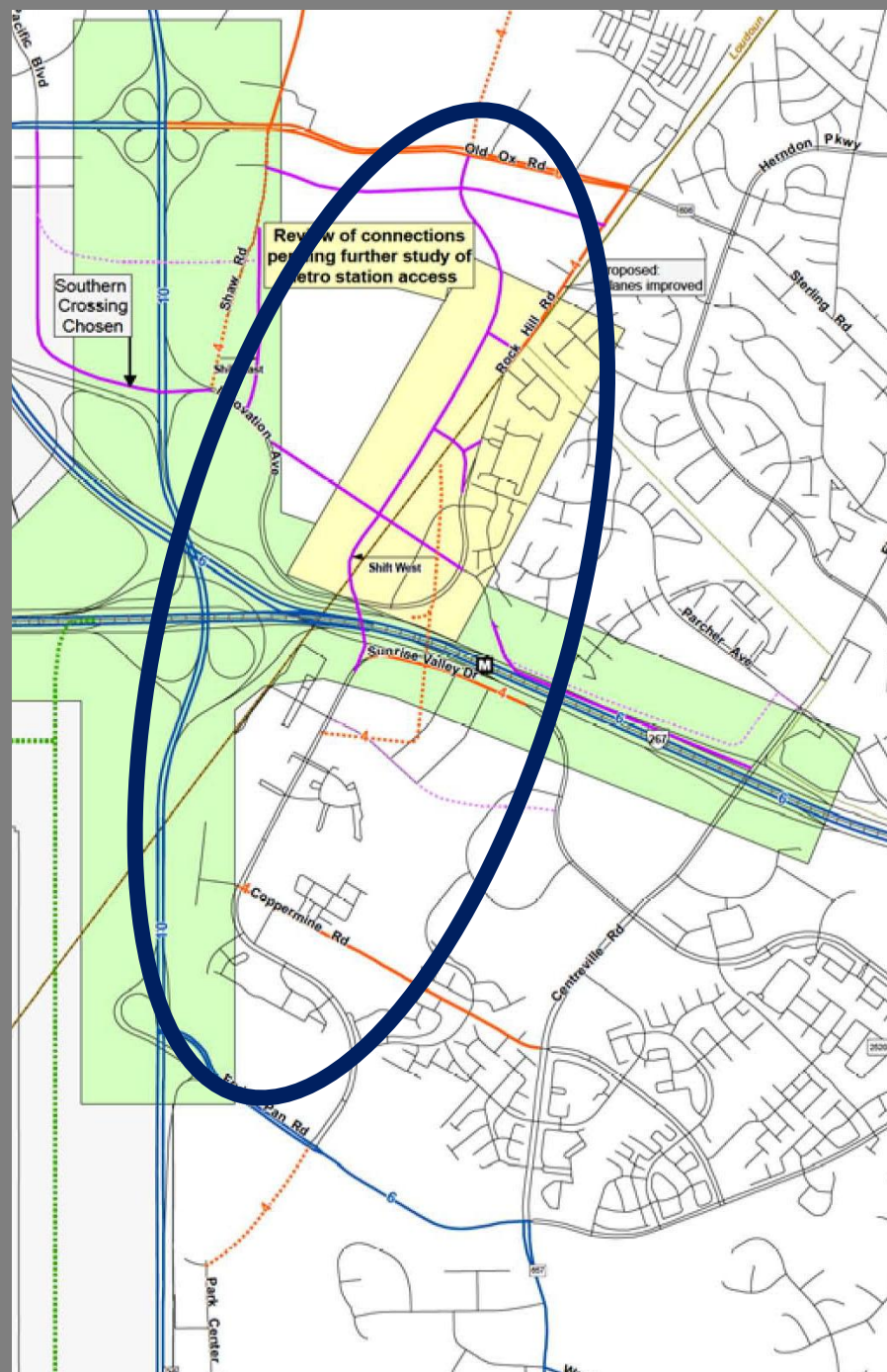
ADOPTED JUNE 15, 2010 AMENDED THROUGH JANUARY 19, 2011 CPAM 2010-0001



Route 28/Toll Road Area Regional Transportation Concepts

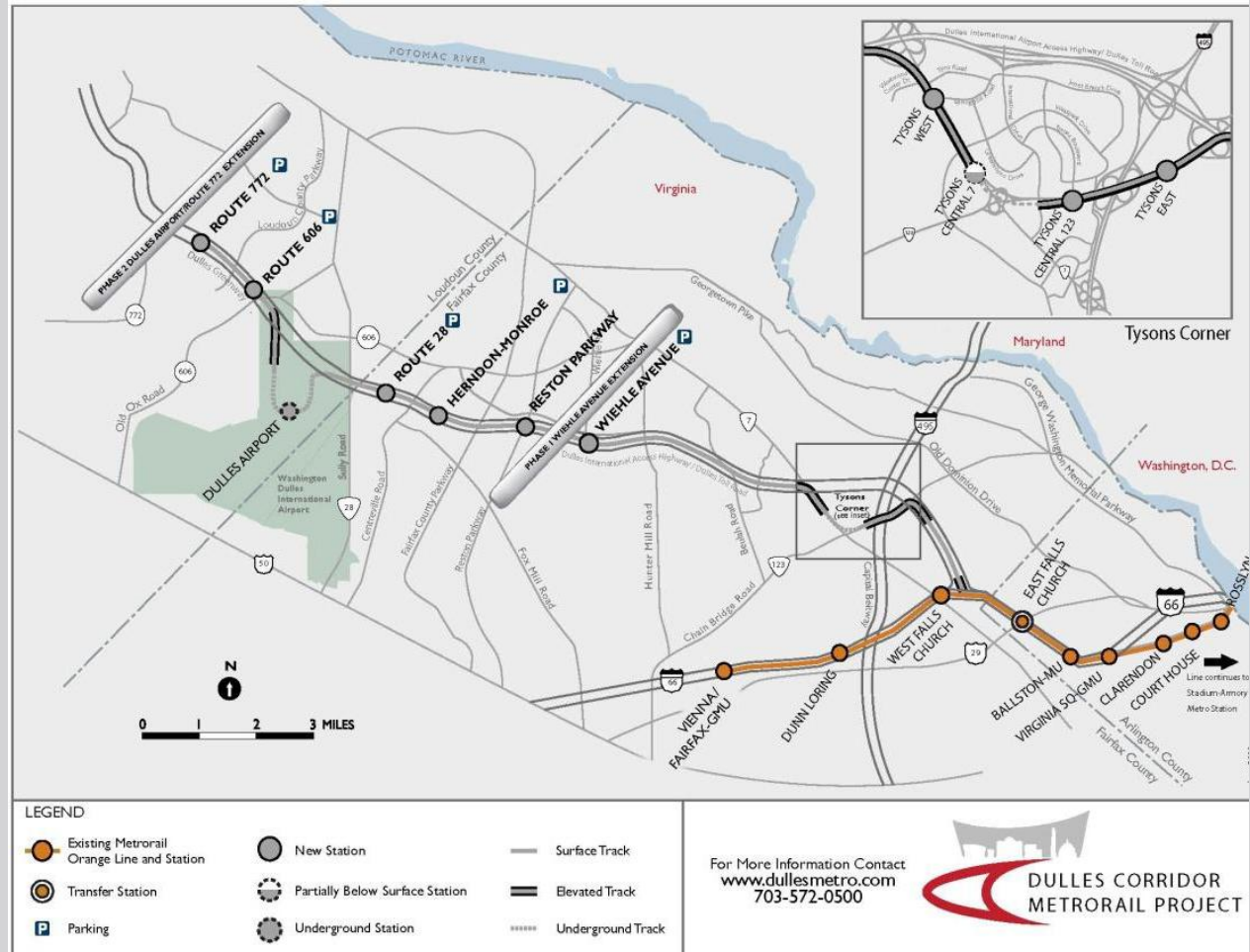
Inter-jurisdictional Staff Working Group





Dulles Corridor Metrorail Project

- Phase II runs from Wiehle Avenue in Reston to Route 772 in Ashburn
- 100% preliminary engineering est. completed in 2012, then design-build contract to be awarded
- Phase II construction anticipated to begin 2013 and completed in 2018
- County currently in negotiations with Funding Partner/Jurisdictions/Agencies being led by U.S. Secretary of Transportation
- Local and commuter bus routes to be added/modified with completion of rail





QUESTIONS