

MOUNTAIN ROAD DISTRICT PARK



SULLY WOODLANDS 2014 FACT SHEET



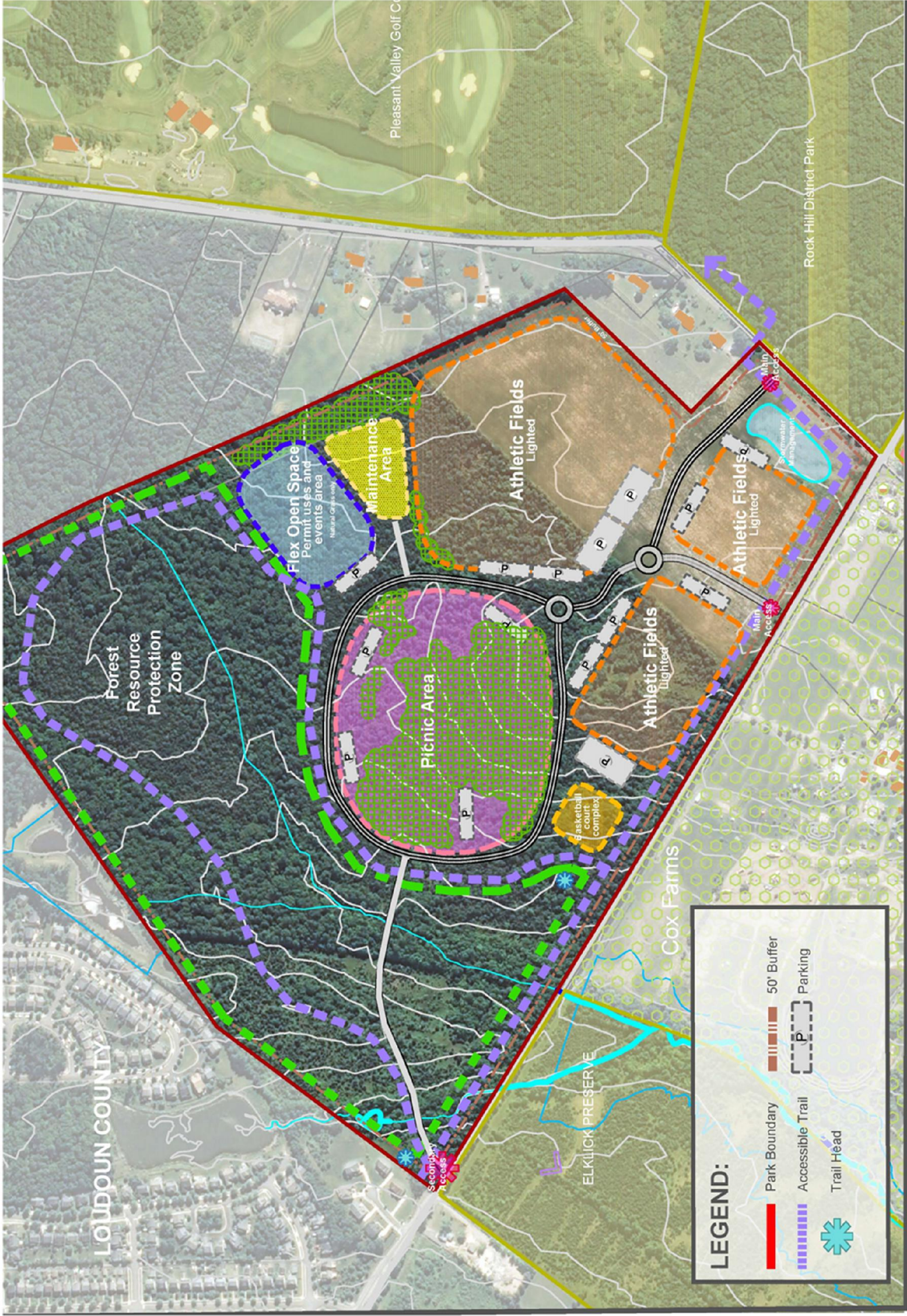
The Sully Woodlands Regional Master Plan land use recommendations for this 200 acre park include region-wide active recreation, special use and resource protection.

The draft CDP for this site envisions a full service district park with lighted athletic fields, a basketball complex, a flexible open space suitable for permitted uses and events not including scheduled athletics, a maintenance facility, an accessible trails network and extensive natural resource protection.



- 200 acres
- Lighted athletic fields
- Parking
- Picnic areas
- Flex space
- Natural resource management
- Trails





MOUNTAIN ROAD DISTRICT PARK

Sully Woodlands

Conceptual Development Plan

