

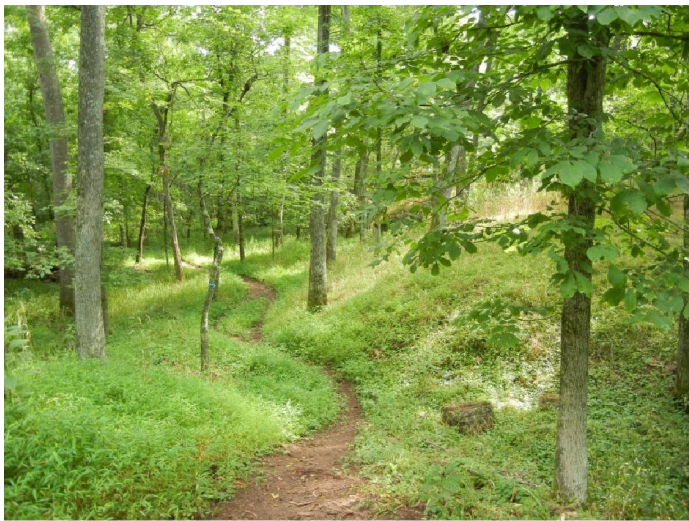
POPLAR FORD PARK



SULLY WOODLANDS 2014 FACT SHEET



This 439-acre park is located south of Bull Run Post Office Road and along the frontage of Bull Run. Manassas Battlefield National Park is located across the stream from the park. The park contains a variety of cultural and natural resources to be protected and interpreted. An extensive multi-use trail network is envisioned for the site with cultural and natural resource interpretation to be located throughout the park.

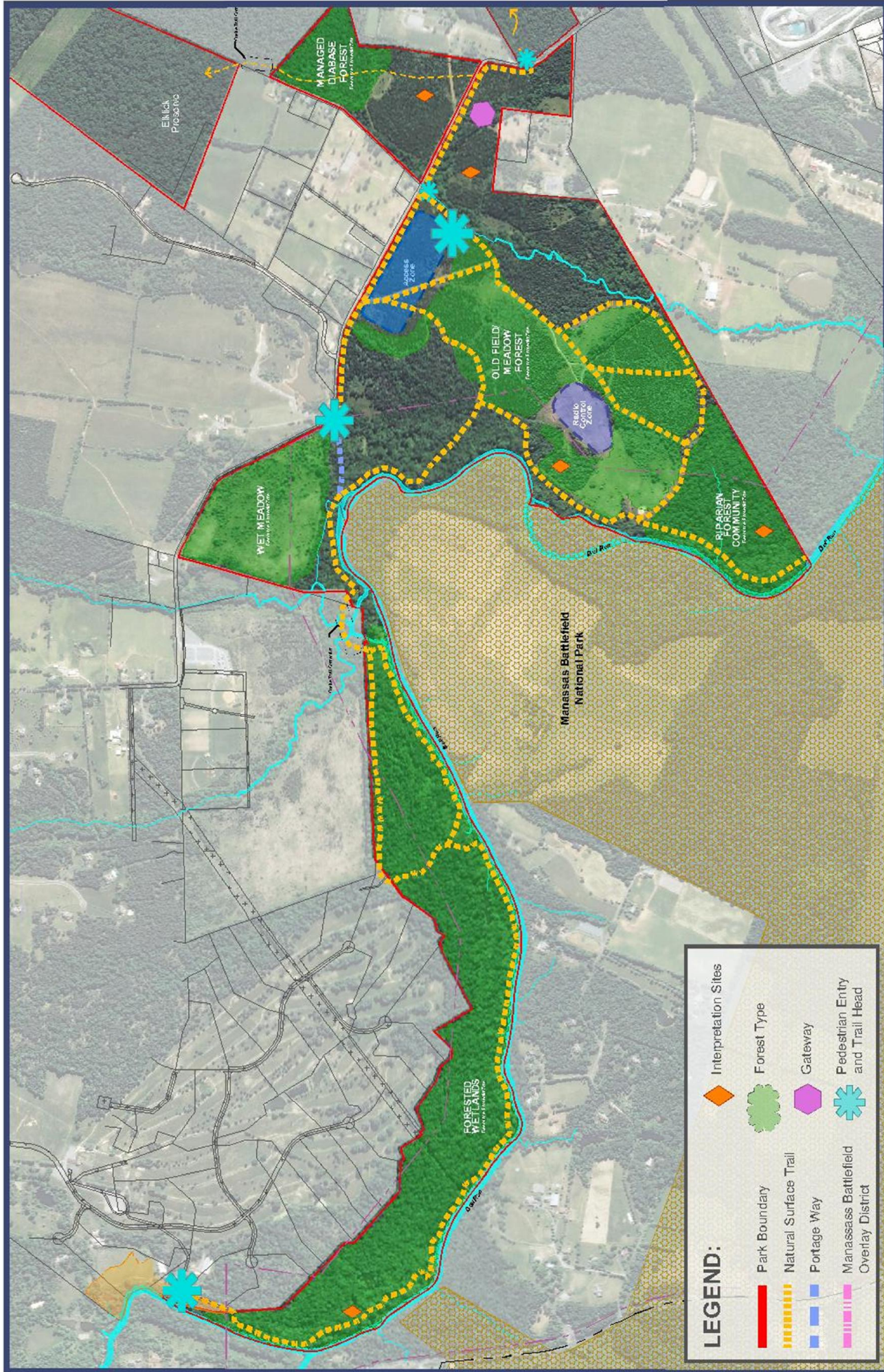


The park is recommended to include a special use area to continue the existing model airplane flying, which currently exists under a special agreement. This area may contain typical park facilities such as shelters and parking as needed.

The entrance zone is located and sized to allow for vehicle access to the park including horse trailers. It is envisioned that this portion of the park will serve as a gateway for experiencing the Sully Woodlands area and may include signage, kiosks or small shelters to highlight this entry point.



- 439 acres
- 91% undisturbed
- Resource stewardship
- 6.65 mile of trails
- Equestrian access
- Sully Woodlands Gateway
- Radio Control Aircraft zone



POPLAR FORD PARK

Sully Woodlands

Draft Conceptual Development Plan

