

# SAPPINGTON



## SULLY WOODLANDS 2014 FACT SHEET



The 220-acre Sappington parcel was purchased by the Park Authority after the approval of the Sully Woodlands Regional Master Plan.

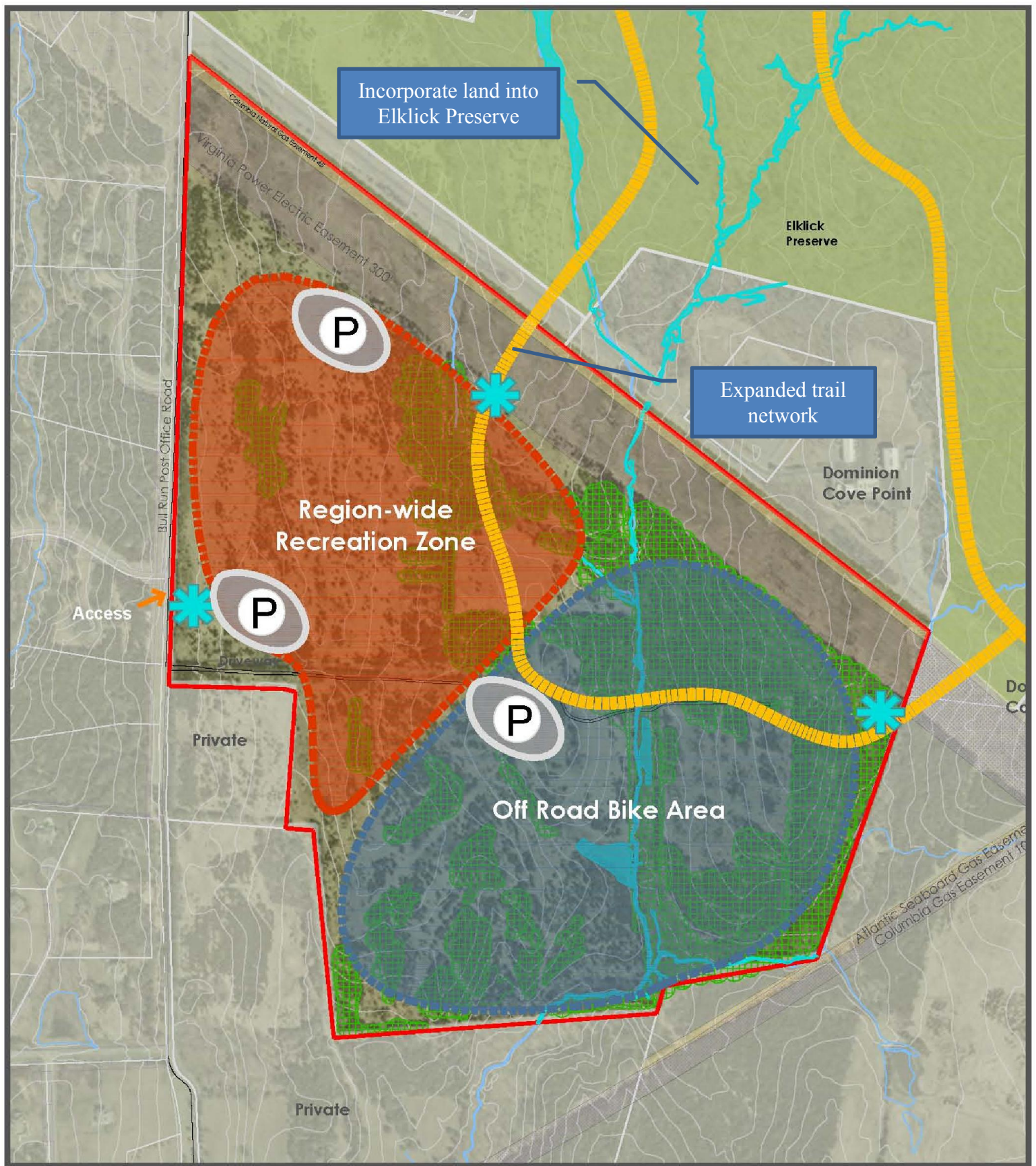
This site is located east of Bull Run Post Office Road and adjacent to Ellick Preserve.



- **Transfer 50 acres to Ellick Preserve, remaining 170 acres for park**
- **Off Road bike area to allow for trails and management by sponsor group. May include facilities such as shelters and parking**
- **Region-wide recreation zone. May include facilities such as lighted athletic fields, comfort facilities, parking, shelters and trails.**







## SAPPINGTON

*Sully Woodlands*

# Conceptual Development Plan

