



County of Fairfax, Virginia

Silver Line Update

November 18, 2015

Mark Canale

Fairfax County Department of Transportation



Project Status



County of Fairfax, Virginia

Status

• **Phase 1**

- VDOT, WMATA, Fairfax Punchlist – Ongoing
 - Fairfax County – 38 open items
 - VDOT with majority of remaining punchlist items
 - Project Closeout anticipated at the end of 2015
- Fairfax County completed clean up of kiss and ride lots and Route 7 median stormwater (MWAA to reimburse the County) – County to maintain Route 7 SWM
- County Maintaining Mclean, Spring Hill K/R lots
- Art in Transit Task Order issued
- Phase 1 close out - \$2.982B

• **Phase 2**

- Total Project Status (all bid packages)
 - Overall Project – 26%
 - Design – 94%
 - Construction – 10%
- Highlights
 - Tower crane at Innovation Center Station
 - All Stations in Fairfax County have construction and/or utility work ongoing
 - Loudoun County Stations in design
 - Aerial Guideway at Dulles Airport under construction
 - Rail Yard at Dulles Airport in design
 - Centreville Road Girders Placement ongoing

- Budget - \$2.775B

- Total Contingency - \$551.4M (Remaining \$500M)
- Contract extension costs under negotiations between MWAA and CRC

County Activities – Past 60 Days

- Girders at Centreville Road for rail track – Installation Completed
- SE for Pavilion at Innovation Center Station (south) PC
 - Approved Oct 1
 - BOS approved Oct 20
- Phase 2 Design Reviews
- County Coordination
 - Project Partners (MWAA, VDOT, DRPT, WMATA, Loudoun County, Town of Herndon, Landowners)
- Completed Phase 1 Kiss and Ride and RT 7 SWM Clean up
- Herndon and Innovation Center Stations Garages – Ongoing design work
- Herndon Station – Coordinated maintenance of traffic with MWAA, CRC, and Fairfax Connector for utility work



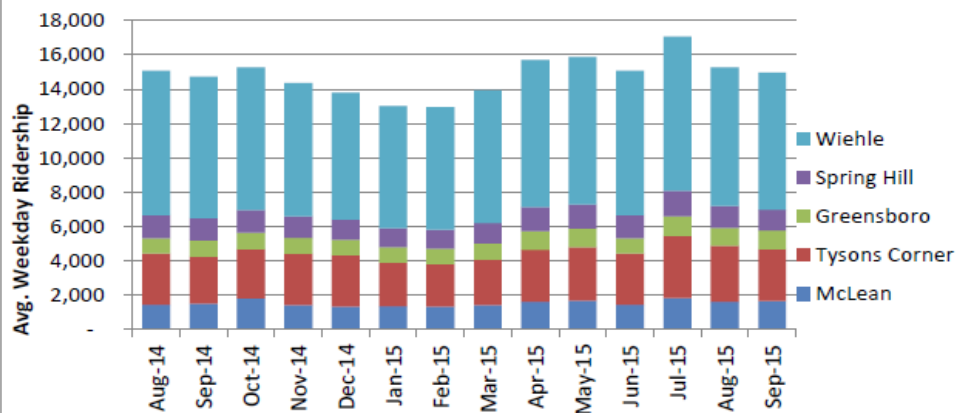
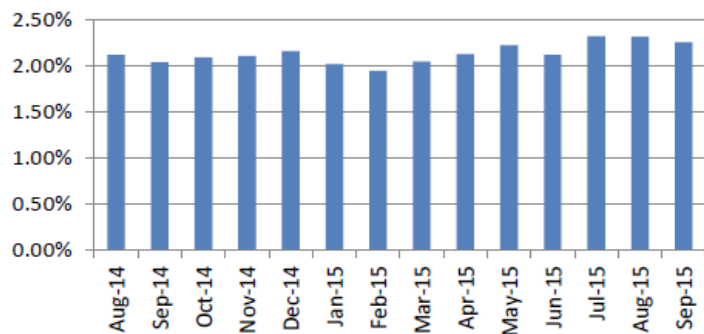
County of Fairfax, Virginia

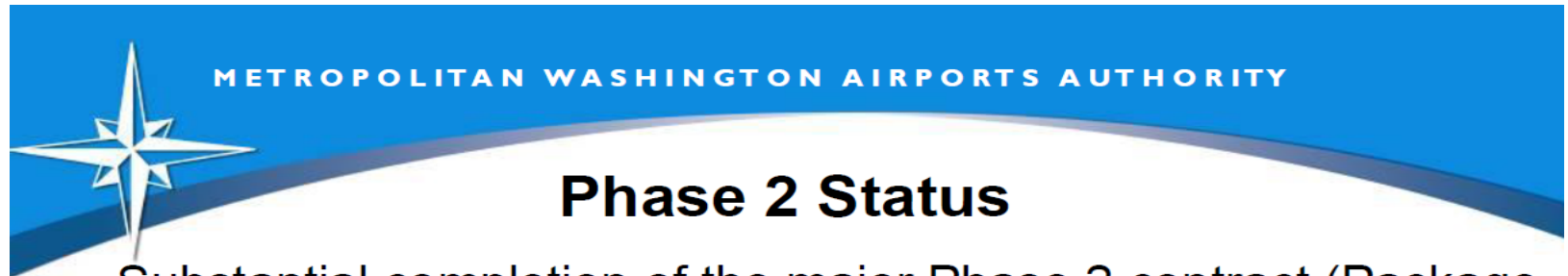
SV Ridership

Typical weekday by month

	Aug-14	Sep-14	Oct-14	Nov-14	Dec-14	Jan-15	Feb-15	Mar-15	Apr-15	May-15	Jun-15	Jul-15	Aug-15	Sep-15
Entries														
McLean	1,439	1,506	1,798	1,432	1,330	1,354	1,328	1,426	1,619	1,669	1,439	1,830	1,629	1,653
Tysons Corner	2,993	2,737	2,860	2,971	2,990	2,525	2,484	2,641	3,032	3,141	2,993	3,605	3,250	3,031
Greensboro	893	949	967	933	906	918	899	955	1,075	1,071	893	1,164	1,041	1,085
Spring Hill	1,316	1,291	1,324	1,258	1,163	1,111	1,095	1,184	1,410	1,406	1,316	1,480	1,271	1,215
Wiehle	8,434	8,250	8,321	7,775	7,421	7,120	7,145	7,716	8,558	8,588	8,434	8,987	8,084	7,981
Silver Line total	15,075	14,733	15,270	14,369	13,810	13,028	12,951	13,922	15,694	15,875	15,075	17,066	15,275	14,965
Silver Line YOY Change												1.3%	1.6%	
Systemwide total entries	710,796	722,340	729,636	681,477	639,387	645,504	665,225	679,318	736,996	712,839	710,796	735,012	659,698	663,488
Silver Line as Pct of System	2.12%	2.04%	2.09%	2.11%	2.16%	2.02%	1.95%	2.05%	2.13%	2.23%	2.12%	2.32%	2.32%	2.26%
Tysons area subtotal	6,641	6,483	6,949	6,594	6,389	5,908	5,806	6,206	7,136	7,287	6,641	8,079	7,191	6,984
Pct of 2004 projections	61%	60%	62%	58%	56%	53%	53%	57%	64%	65%	61%	69%	62%	61%

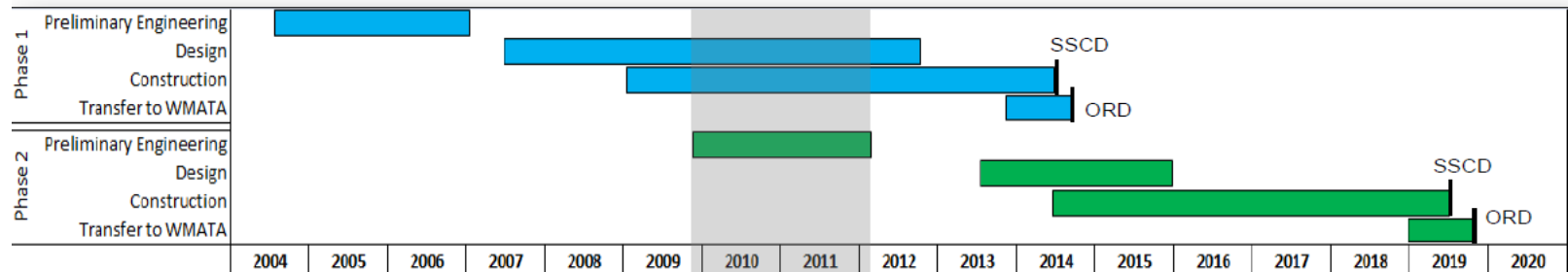
Silver Line as Pct of System





Phase 2 Status

- Substantial completion of the major Phase 2 contract (Package A) has been extended by 13 months to August 2019
- This is due to cumulative design changes
 - Consistency with Phase 1 late changes
 - Regulatory changes
 - Stakeholder requests
 - Improved safety & reliability



SSCD: Scheduled Substantial Completion Date
ORD: Operational Readiness Date

Phase 2 Preliminary Engineering completed prior to Phase 1 Completion



County of Fairfax, Virginia

Aerial Guideway

Pour drilled shafts, columns, and pier caps (On Airport and Yard Leads)



Facilities: Innovation Center Station



Herndon Station

Hand tunneling for utilities and installation of 34.5 KV duct bank



Facilities: Innovation Center Station

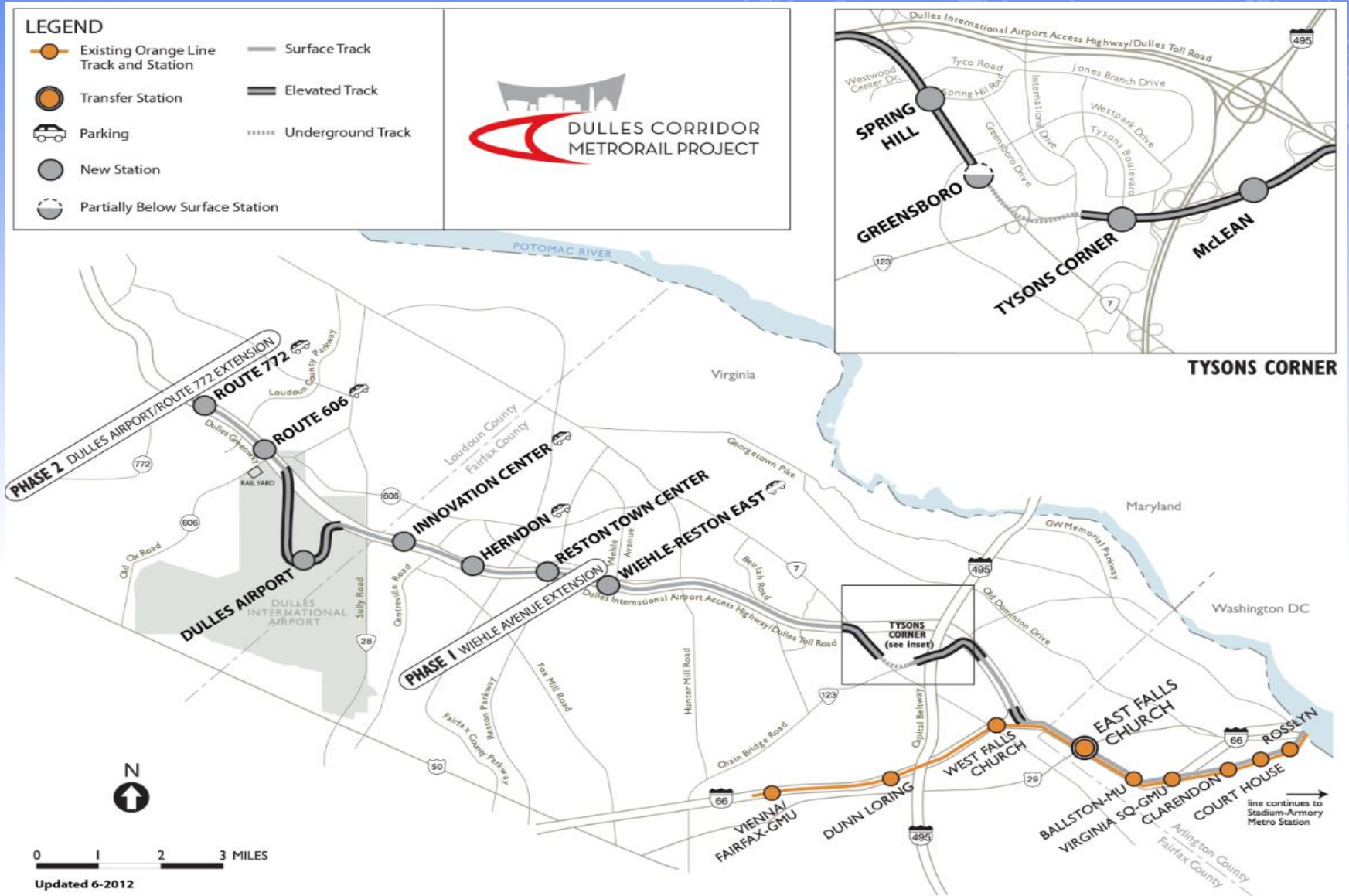




County of Fairfax, Virginia

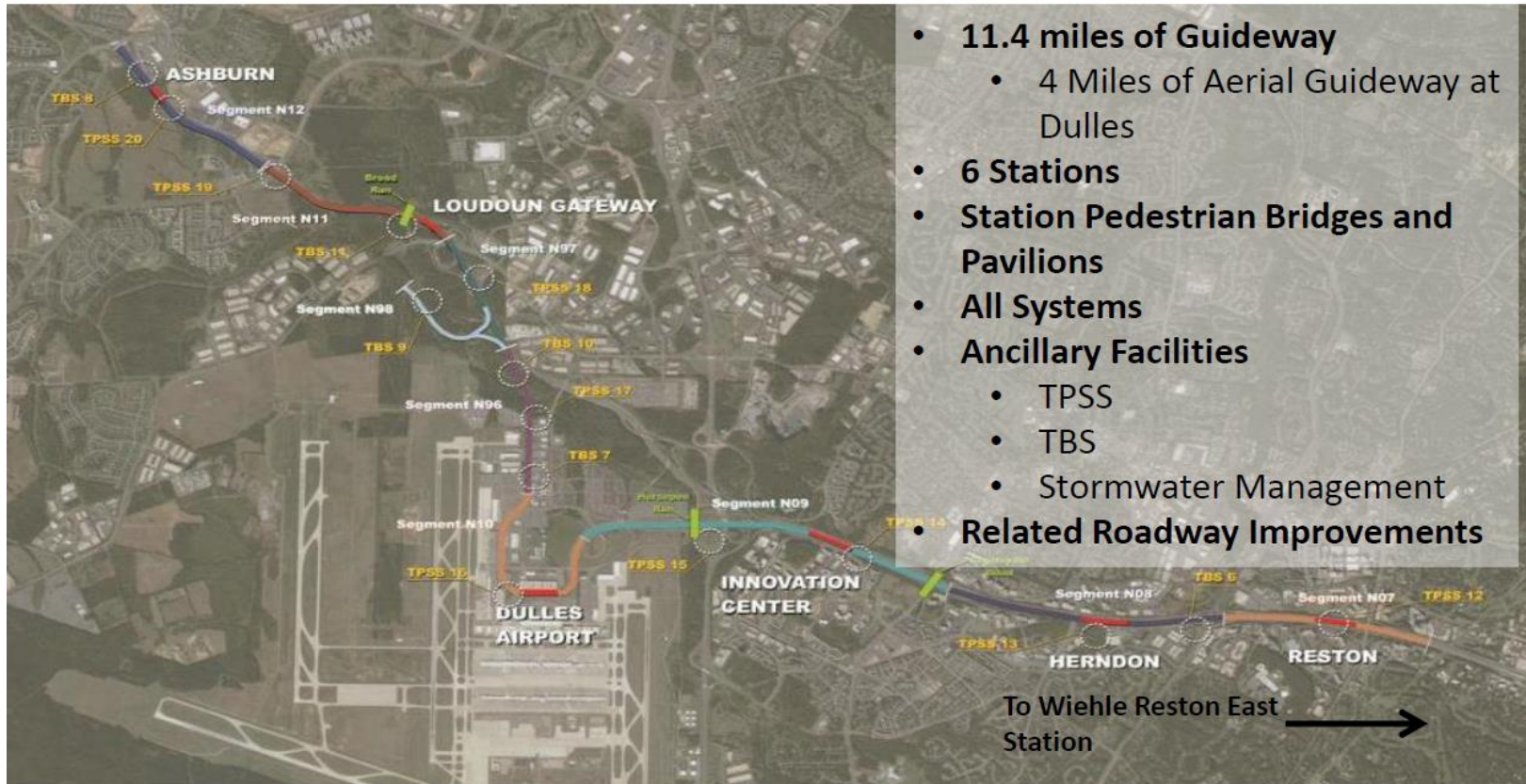
Project Overview

Route Map





Phase 2 Overview





Allocation of Estimated Capital Costs and TIFIA

(\$ in millions)

SOURCES OF CAPITAL FUNDS \$ Millions	PHASE 1	PHASE 2 ⁽¹⁾	RAIL PROJECT BUDGET		TIFIA Credit Assistance
			Total	% of Total	
Federal	\$ 900	\$ -	\$ 900	15.8%	
Commonwealth of Virginia ⁽²⁾	252	323	\$ 575	10.1%	
Fairfax County	400	515	915	16.1%	403
Loudoun County	-	273	273	4.8%	195
MWAA (Aviation Funds)	-	233	233	4.1%	-
MWAA (Dulles Toll Road)	\$ 1,354	\$ 1,434	\$ 2,788	49.0%	1,277
TOTAL SOURCES OF FUNDS ⁽³⁾	\$ 2,906	\$ 2,778	\$ 5,684	100.0%	\$ 1,876 33.0%
<div>Fixed amount</div> <div>Fixed percentage of total cost</div> <div>Residual</div>					

(1) Phase 2 Parking Garages are assumed to be funded directly by the Counties and are not included in the \$5.684 billion project budget.

(2) Does not include \$150 million of Commonwealth funds that will be used to pay interest on Dulles Toll Road revenue bonds.

(3) Totals may not sum due to rounding.

(4) Unallocated Phase 2 contingency as of October 31, 2014, is approximately \$541 million.



Silver Line Parking

Station	Existing Spaces	Number of New Metrorail Spaces	Total
Herndon	1,622	1,949	3,571
Innovation Center	0	2,027	2,027
Route 606	0	1,965	1,965
Route 772 (North)	0	1,434	1,434
Route 772 (South)	0	1,540	1,540
TOTAL		8,915	10,537

Note: Wiehle Reston East (Phase 1) Garage 2,300 spaces

Total Parking Provided Phase 1 and 2 = **12,800 spaces**



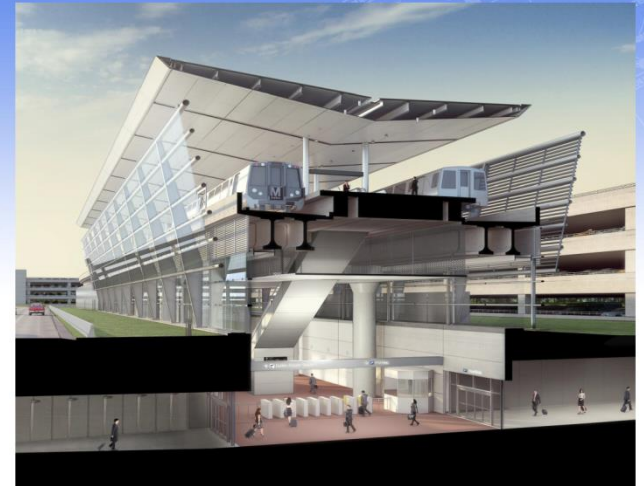
County of Fairfax, Virginia

Dulles Airport Location Details

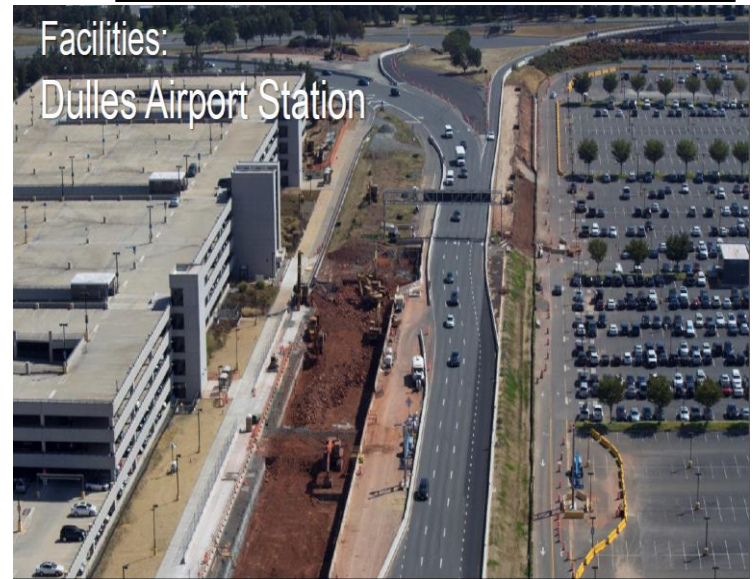
- The Dulles Airport Station will feature an aerial station approximately 1,000 feet north of the terminal near the Garage 1 (North).
- The station will be linked to the terminal via the existing tunnel that connects with the Garage 1 (North) and includes a number of moving walkways



Dulles Airport Station



Facilities: Dulles Airport Station

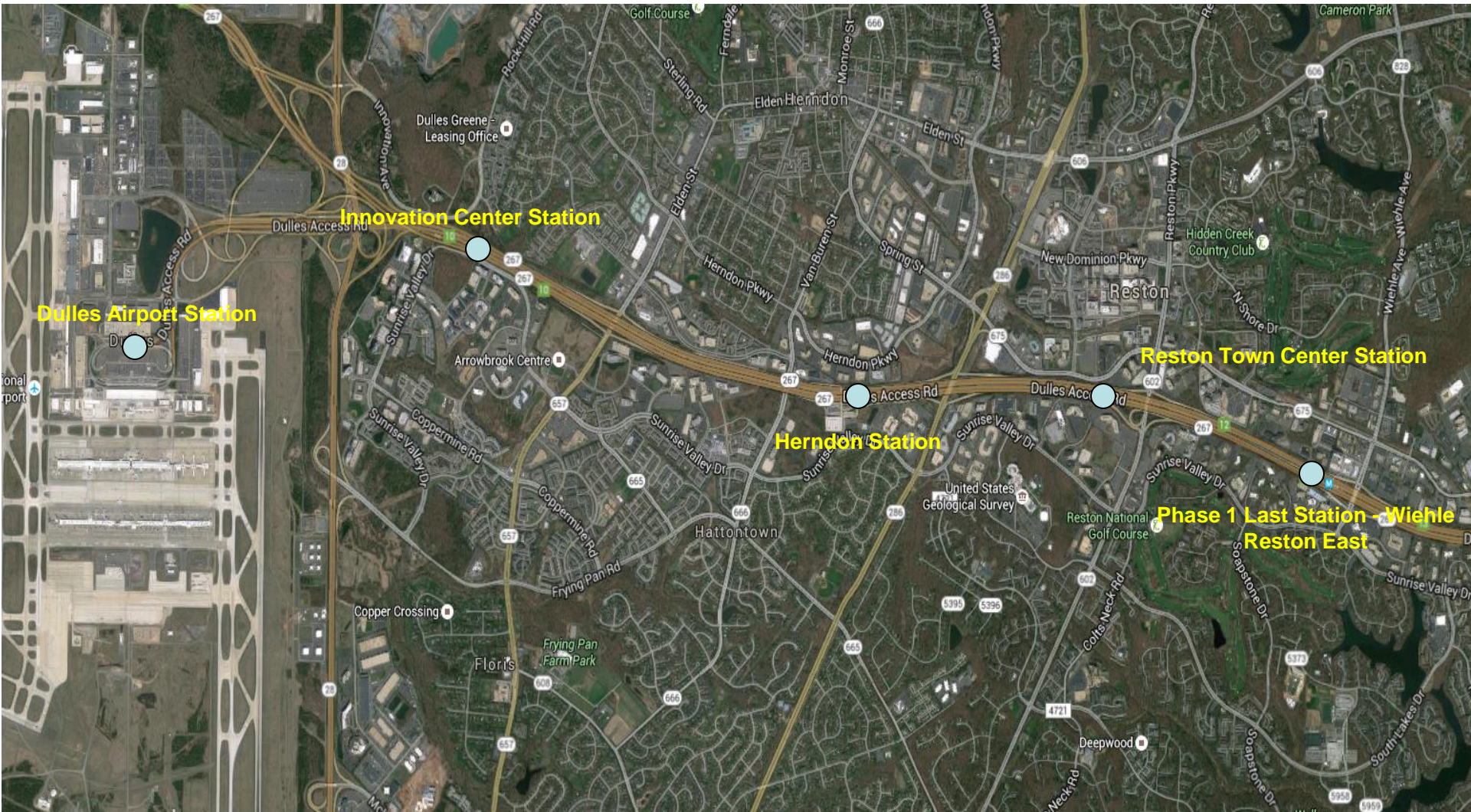




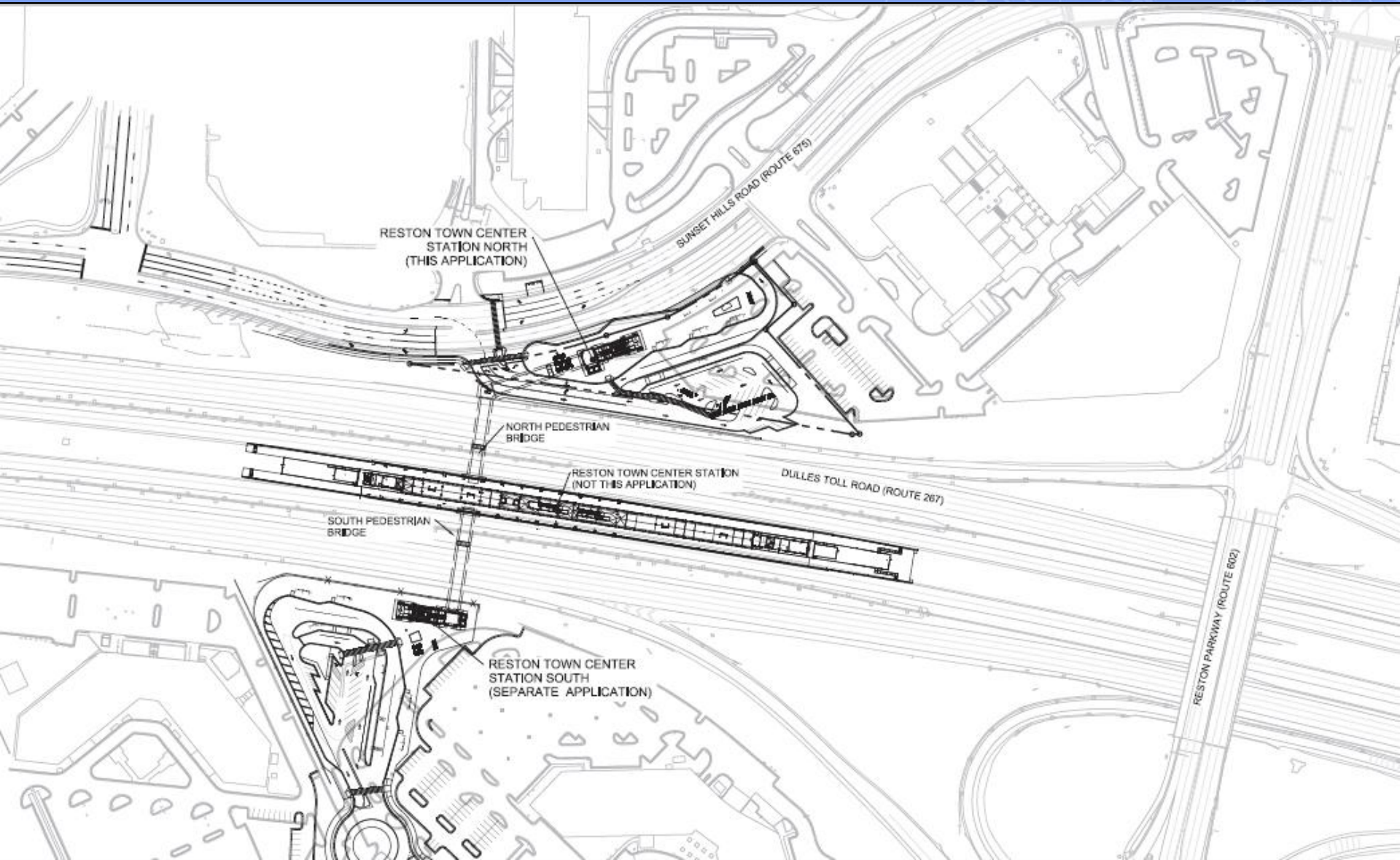
Fairfax County Stations without Garages



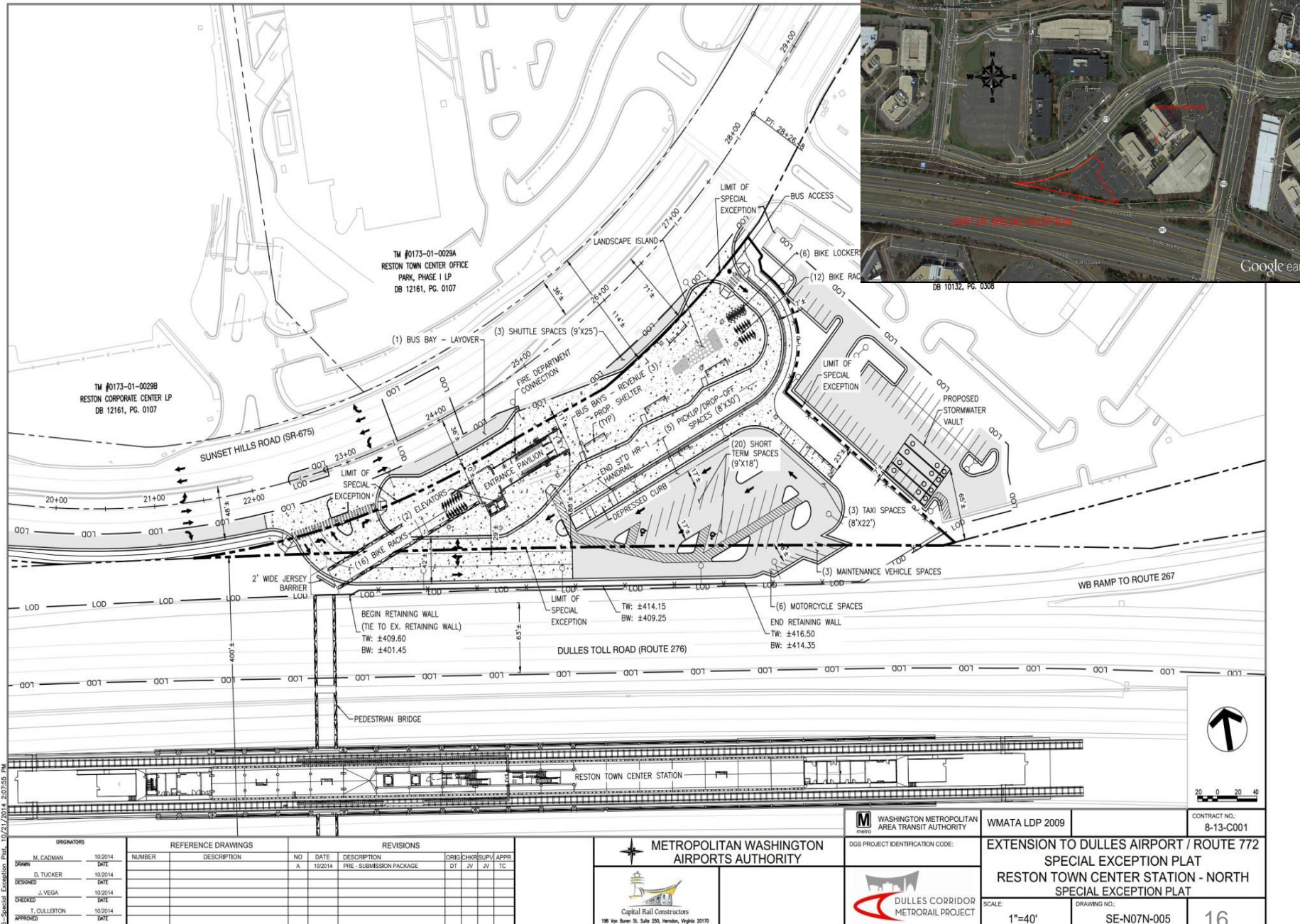
County of Fairfax, Virginia



Reston Town Center Station

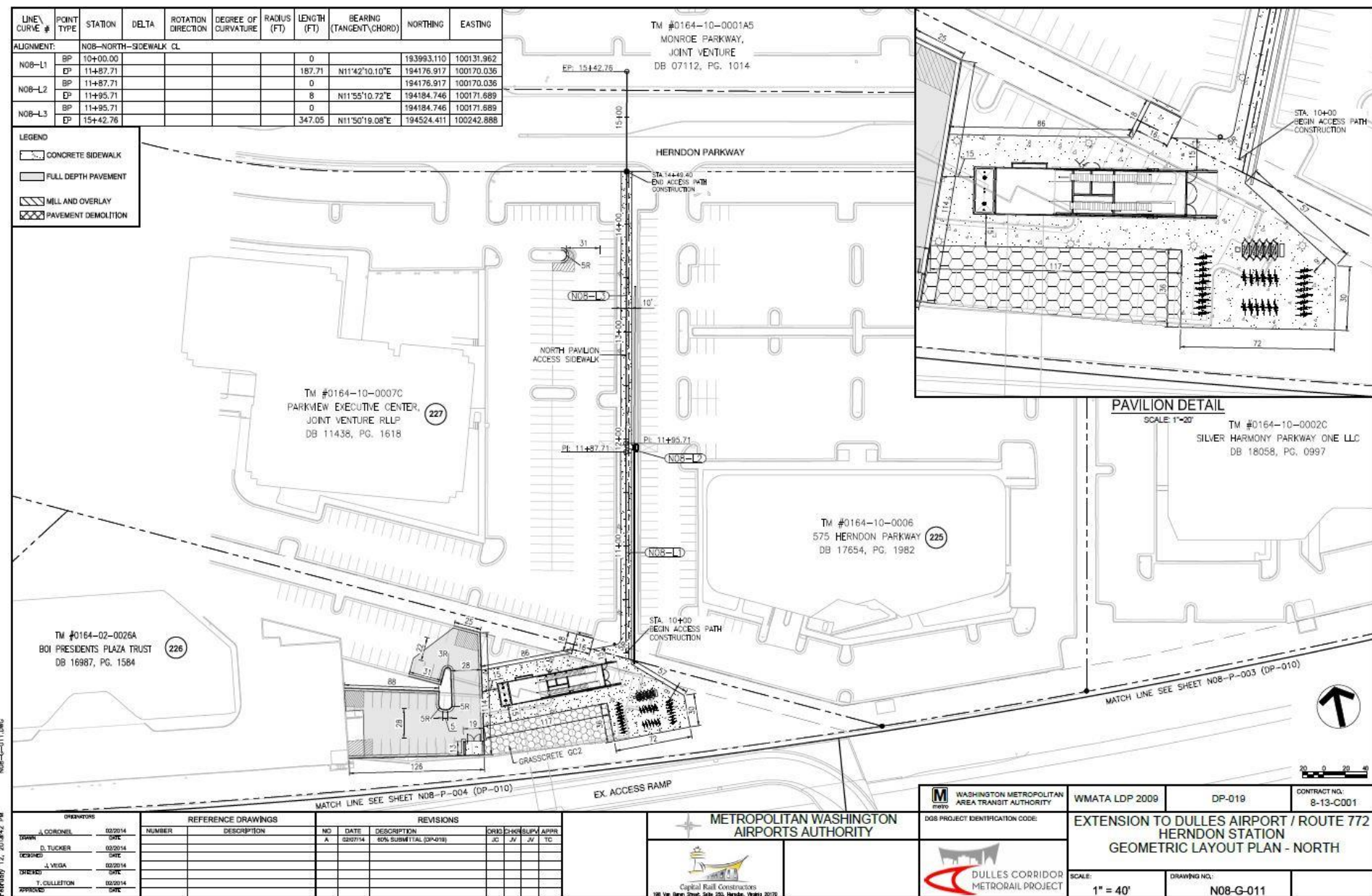


Reston Town Center Station - North Side

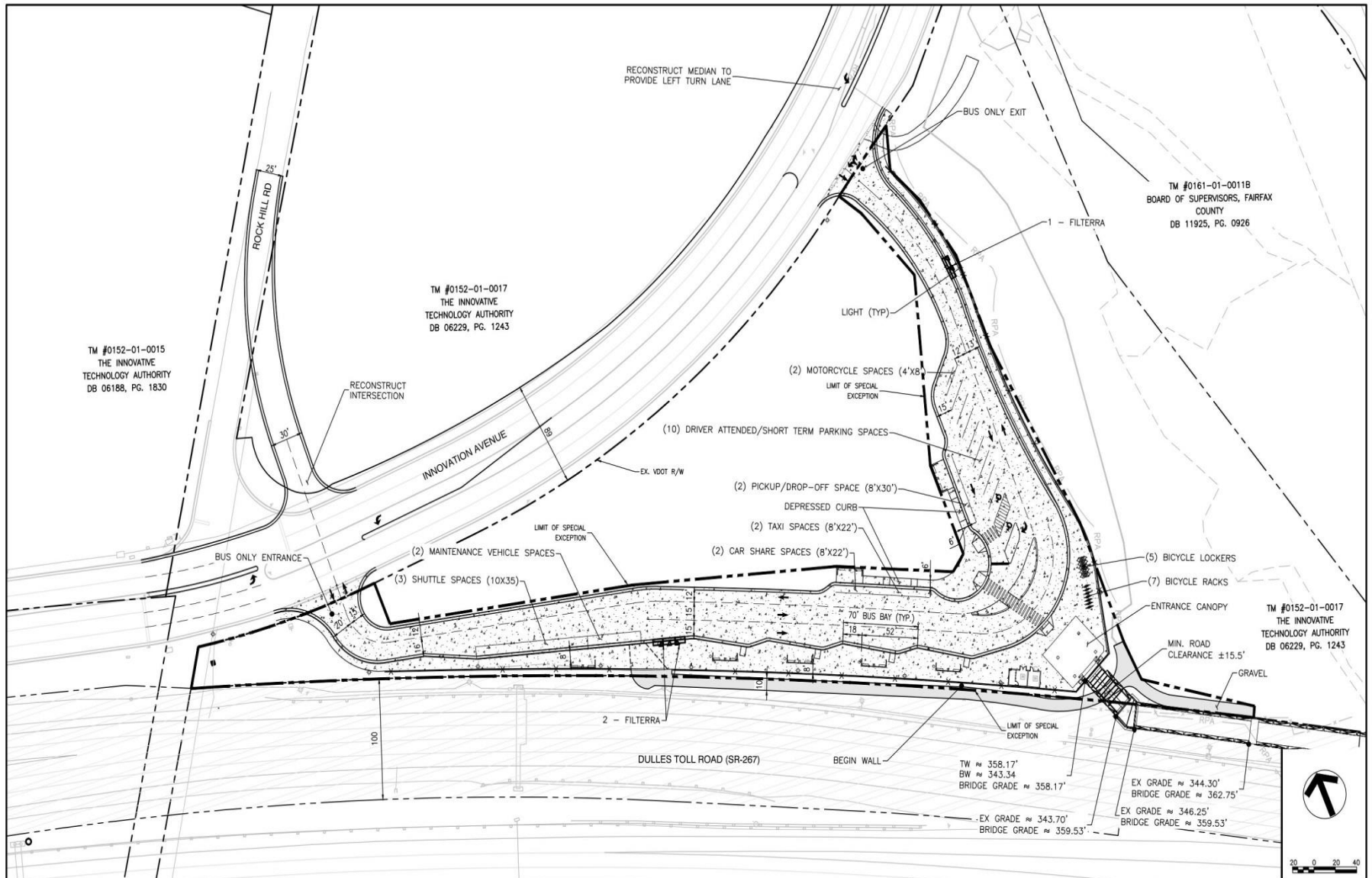


[illegible]

Herndon Station - North Side



Innovation Center Station – North Side



TM #0161-01-00118
BOARD OF SUPERVISORS, FAIRFAX
COUNTY
DB 11925, PG. 0926

TM #0152-01-0017
THE INNOVATIVE
TECHNOLOGY AUTHORITY
DB 06229, PG. 1243

TM #0152-01-0017
THE INNOVATIVE
TECHNOLOGY AUTHORITY
DB 06229, PG. 1243



20 0 20 40

S:\SE Plan_10/01/2014_2:39:29 PM

												WASHINGTON METROPOLITAN AREA TRANSIT AUTHORITY		WMATA LDP 2009		CONTRACT NO. 8-13-C001			
ORIGINATORS		REFERENCE DRAWINGS				REVISIONS				<div><p>METROPOLITAN WASHINGTON AIRPORTS AUTHORITY</p></div> <div><p>Capital Rail Constructors 100 Van Buren St, Suite 250, Herndon, Virginia 20170</p></div> <div><p>DULLES CORRIDOR METRORAIL PROJECT</p></div>									
M. CADMAN 10/2014		NUMBER	DESCRIPTION	NO	DATE	DESCRIPTION	ORIG	CHKD	SUPV					APPR					
D. TUCKER 10/2014				A	10/2014	PRE - SUBMISSION PACKAGE	DT	JV	JV					TC					
DESIGNED J. VEGA 10/2014																			
CHECKED T. CULLETON 10/2014																			
APPROVED																			
DRAWN												DGS PROJECT IDENTIFICATION CODE:				EXTENSION TO DULLES AIRPORT / ROUTE 772 SPECIAL EXCEPTION PLAT INNOVATION CENTER STATION - NORTH SPECIAL EXCEPTION PLAT			
												SCALE: 1"=40'							
												DRAWING NO.: N09N-SE-005							
												20							



0 100 200 400 Feet





County of Fairfax, Virginia

Fairfax County Stations with Garages

Innovation Center Station Garage Location Map





County of Fairfax, Virginia

Innovation Center Station Garage



	Area (SF)	Required	Proposed
Kiss & Ride	25,500	23 Driver Attended + 4 Motorcycle	28 Driver Attended + 4 Motorcycle
Garage	672,500	2,032 Spaces	2,075 Spaces
FCDOT Office&Equip	480	-	480 SF
WMATA Office&Equip	580	400 SF	580 SF
Bicycle Parking*	2500	80-100 spaces	178*
Secure Bicycle Parking	1900	-	158

Innovation Center Station Garage

Total Project Estimate and Schedule

Total Project Estimate : \$57 Million

Schedule

- **Aug14-Oct16** Design
- **Dec15-Jan16** Planning Commission and Board of Supervisors for Proffered Condition Amendment to raise garage 1 level
- **Jun16-Oct16** Building and Site Permits Submission & Review
- **Oct16-Mar17** County bid process
- **Spring 2017** Construction Notice to Proceed
- **Spring 2019** Substantial Completion

Building Design and Construction Division



Innovation Center Station Garage

Project Status

- Consultant contract awarded in August 2014.
- Design Development phase and value engineering completed
 - Raise garage above grade (PCA/FDPA)
 - VE resulted in \$5.6 Million in options. Approved recommendation includes \$4.1 Million savings
 - Snow Removal / Snow Melt equipment to be included as per
- PCA scheduled for Planning Commission in Dec 2015 and BOS in Jan 2015. Construction documents for the garage will be authorized in Nov 2015.
- Common infrastructure project gave Contractor (Shirley) Notice to Proceed in November 2015 for the Rough Grading and Offsite Stormwater work.
- Reciprocal Easement Agreement and maintenance plan will be signed in 2016.
- Common infrastructure project to provide a clear, rough graded, pre-blasted "garage site" for the County's contractor
- Onsite coordination and cooperation will be required as MWAA will be working on County parcel and Nugget will be working on neighboring parcels and roads

Building Design and Construction Division



Campus



Campus



Herndon Station Garage





County of Fairfax, Virginia

Herndon Station Garage



Sunrise Valley Drive - looking West

Budget / Schedule

Total Project Estimate	\$56.7 million
Design:	June 2014 – November 2015
Permitting:	September 2015 – May 2016
Bid:	January 2017
Construction Award:	April 2017
Construction:	April 2017 – April 2019
Ready for Occupancy:	May 2019

Building Design and Construction Division



Project Status

- 33,097 SF of land area acquired from Sprint to the east, to accommodate the proposed garage, stormwater relocation, and turn lane on Sunrise Valley Drive.
- Frontage improvements along Sunrise Valley Drive will be designed and constructed by MWAA, and easements for utility relocation will be acquired by MWAA.
- Acquisition closing completed on August 24, 2015.
- MWAA will reimburse Fairfax County for turn lane dedication area.
- Construction Documents phase in progress, with the 100% CDs received on October 26, 2015. Revised submittal incorporating comments due November 13, 2015.
- Ongoing Permit process – Site Permit submitted, Building Permit to be submitted.
- Stormwater design in progress, existing dry pond being converted to a wet pond.
- Ongoing coordination with MWAA for site and existing garage interface, stormwater management, Sunrise Valley Drive frontage improvements, utilities relocations, onsite transportation improvements, and campus-wide signage.
- Ongoing coordination with WMATA for PARCS system and SmarTrip, and integration with MWAA work/schedule.

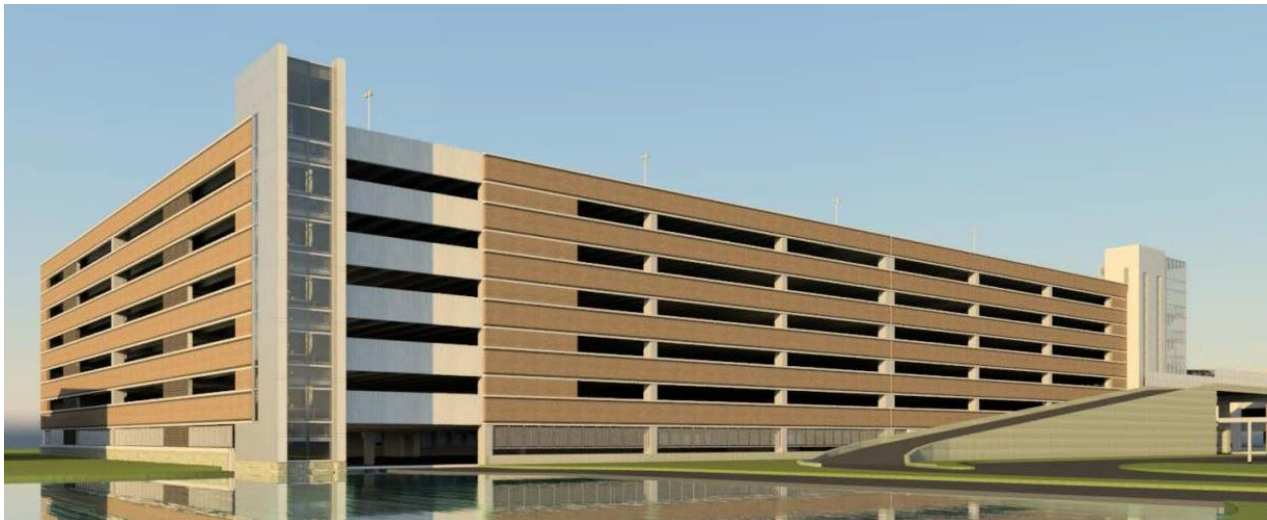
Building Design and Construction Division



Garage Design - Elevations



Sunrise Valley Drive - looking West



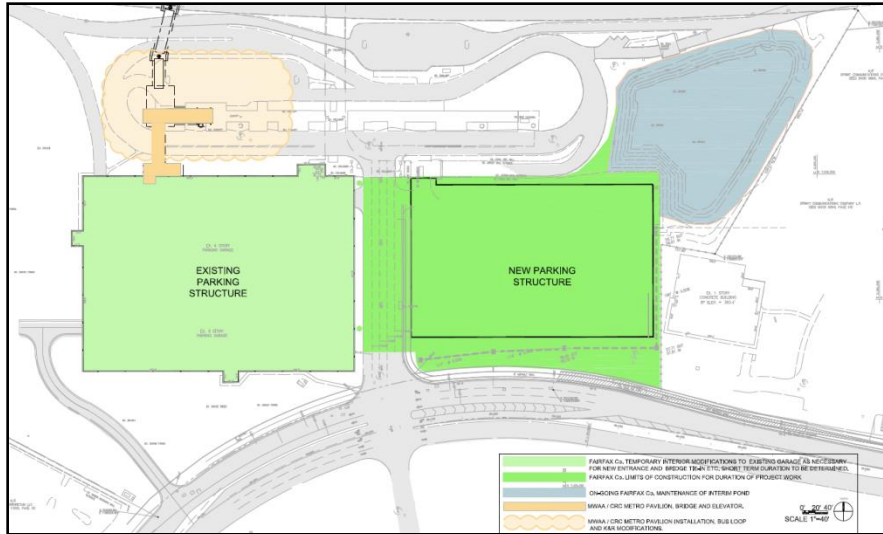
Dulles Toll Road - looking South

Garage Design - Bridge

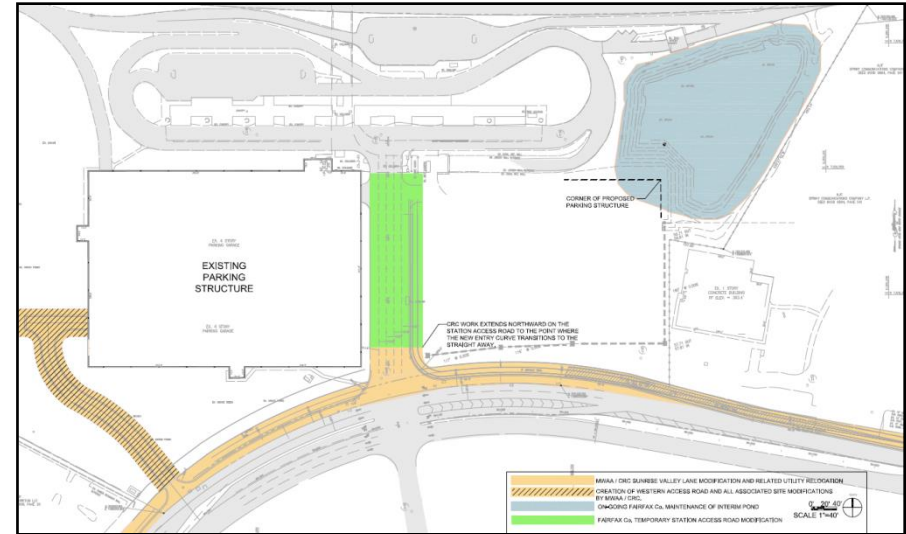


Station Access Road - looking North

MWAA Coordination



- Metro South Pavilion (MWAA/CRC)
- Stormwater Pond (FC)
- Station Access Road (FC)
- Existing Garage (FC)
- New Garage (FC)



- Sunrise Valley Drive (MWAA/CRC)
- Western Access Road (MWAA/CRC)



Questions?