



Sully District Citizens' Associations

Michael J. Cooper

Metropolitan Washington Airports Authority
State & Local Government Affairs Manager

December 15, 2021

Airports Background



- Reagan National and Dulles International Airports – federal airports turned over in 1987 “Transfer Act” to MWA to manage as “a unit”.

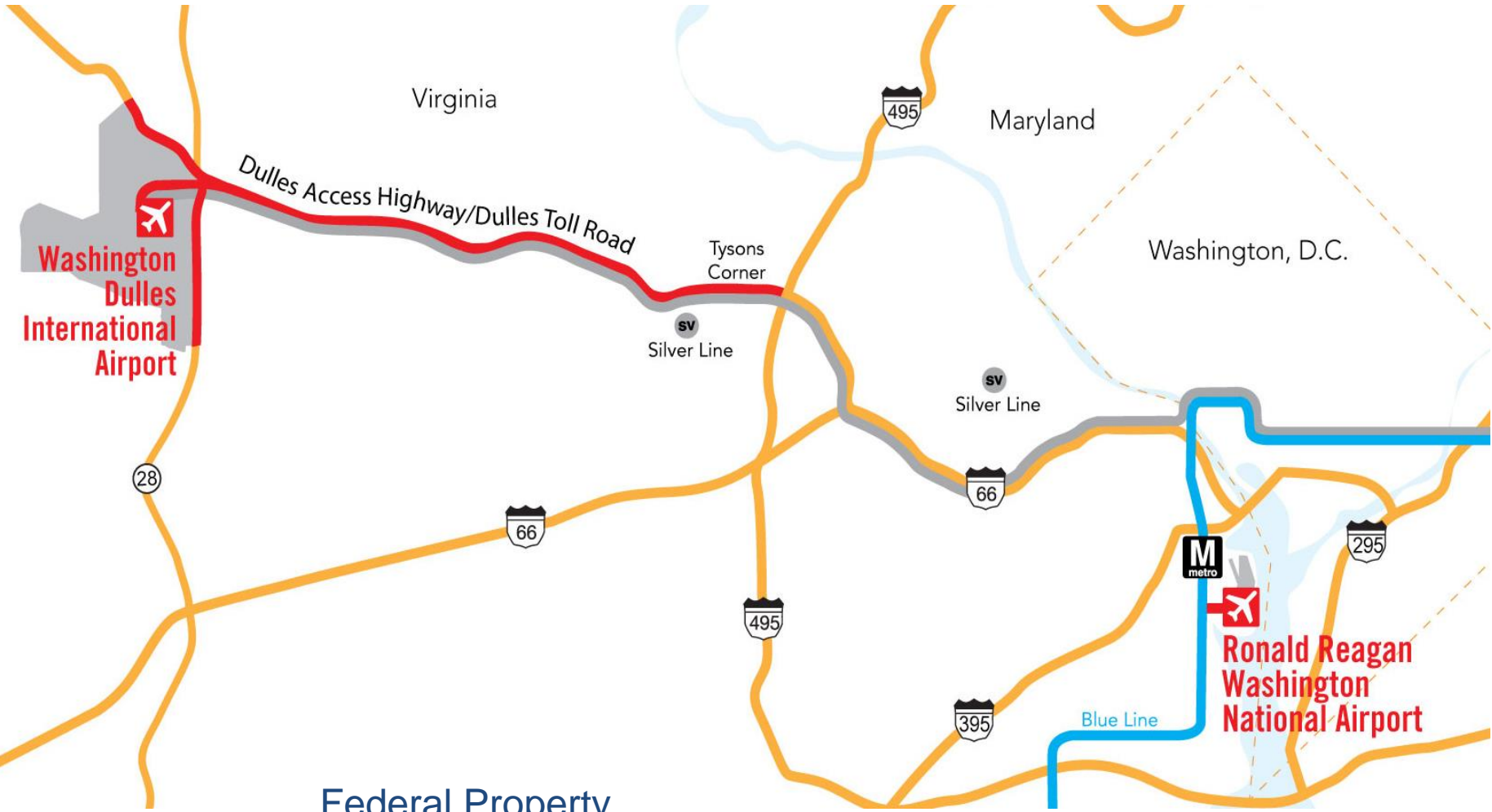
Rationale:

- Capital investments in the two airports needed
 - Access to the bond markets
- Current Roles also include:
 - Constructing Rail Line to IAD/Loudoun
 - Operating the Dulles Toll Road





Federal Airports Property



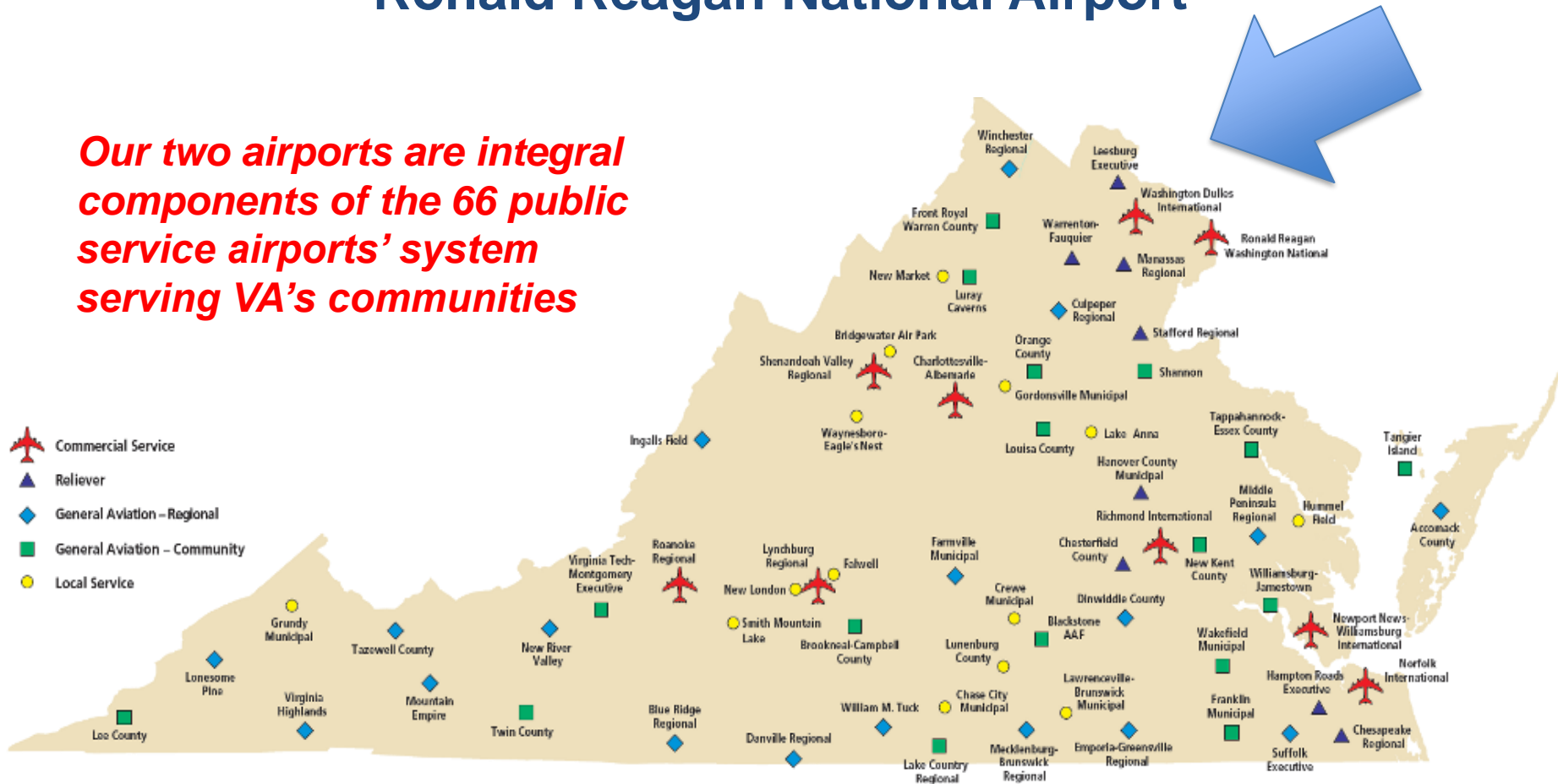
Federal Property



Dulles Airport Access Highway
Airports (IAD 11,830 acres; DCA 860 acres)

Working Together & Within Virginia's Aviation System: Washington Dulles International Airport Ronald Reagan National Airport

Our two airports are integral components of the 66 public service airports' system serving VA's communities



Investing Over \$1 Billion in Reagan National will Improve Customer Experience and Reduce Congestion

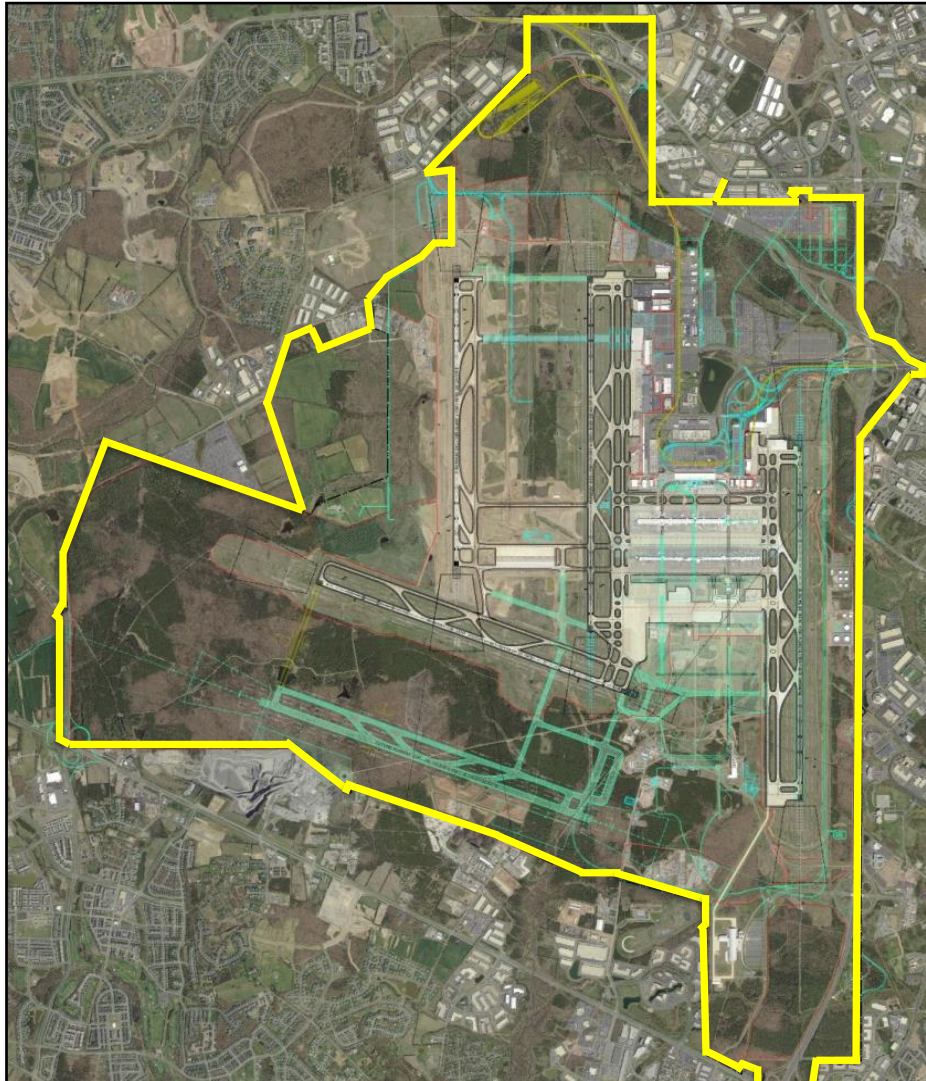
New North Concourse - Completed! 2021



Airport Comparison

Dulles:

- 11, 573 acres
- 21.7 million passengers (2015)



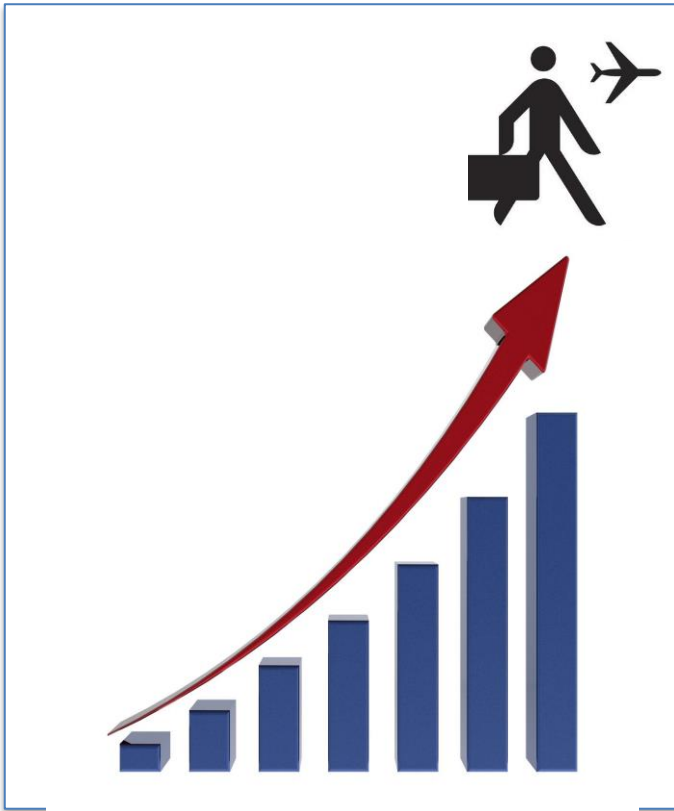
Reagan National:

- 860 acres
- 23 million passengers (2015)

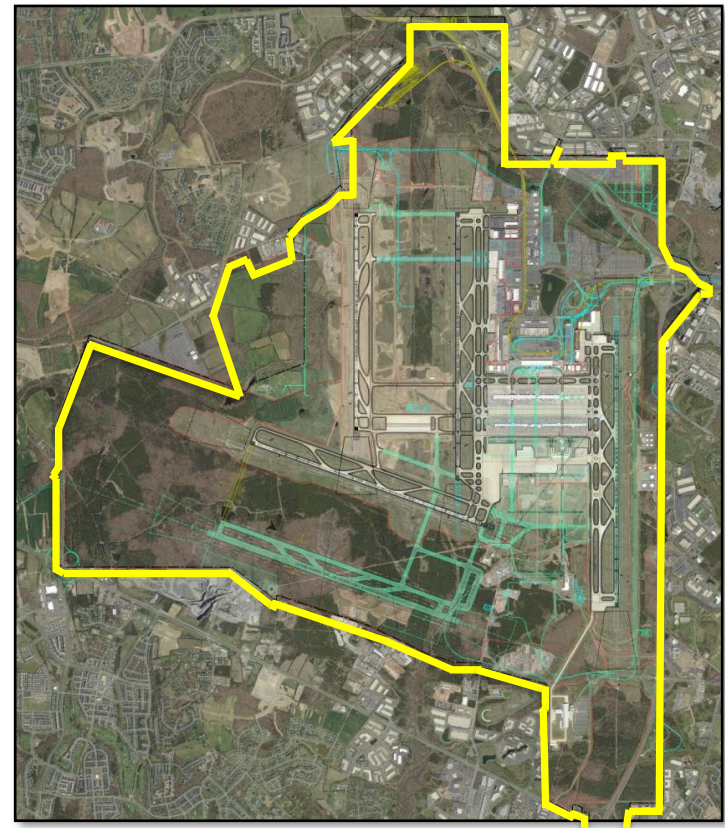
(Both airports to scale)

Drivers of Future Growth at Dulles

Passenger Enplanements



Real Estate Development





METROPOLITAN
WASHINGTON
AIRPORTS AUTHORITY
MWAA.COM



@Reagan_Airport

@Dulles_Airport

@Dulles_Toll_Road



reaganairport

FlyDulles

dullestollroad

