

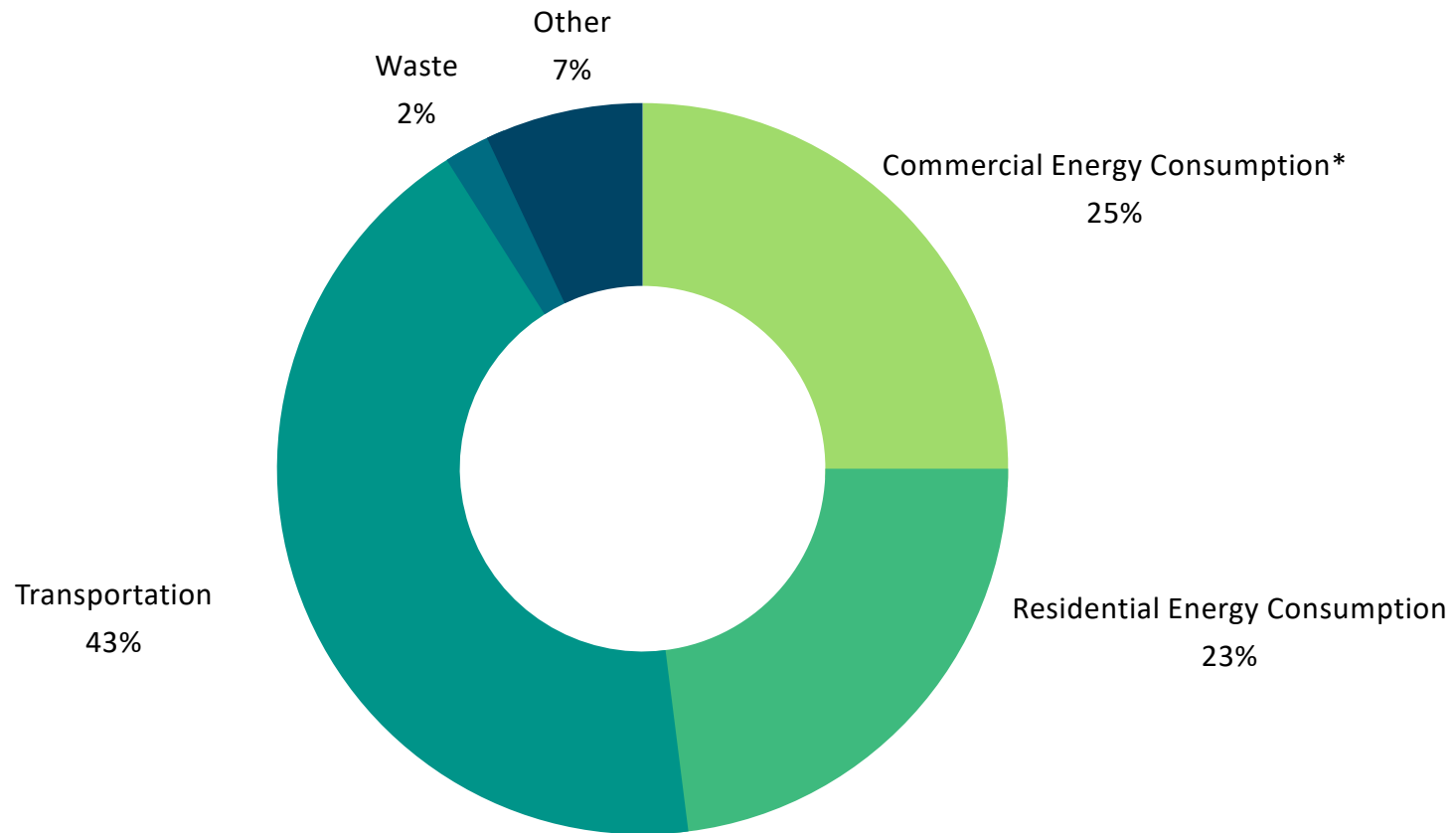


## CHARGE UP FAIRFAX Pilot Program

**Gina Weil**  
Climate Mitigation Specialist  
Office of Environmental and Energy Coordination

**October 25, 2023**

# Fairfax County's GHG Emissions Inventory (2020)



\*Commercial energy consumption reflects energy use from multi-family dwellings and apartment buildings as well as other commercial buildings.

Source: [Community-Wide Greenhouse Gas Emissions Inventory Summaries | Metropolitan Washington Council of Governments \(mwcog.org\)](https://www.mwcog.org/Community-Wide-Greenhouse-Gas-Emissions-Inventory-Summaries)



## Switching to an EV

EVs produce less air pollution and carbon emissions - less than 25% of the emissions of a comparable gas-powered vehicle, per national averages.

Drivers save \$6,000-\$10,000 in reduced fuel and maintenance needs by buying an electric vehicle (EV).

Here are some tips to consider:

- Select an EV that works for you! EVs come in all shapes and sizes and are evolving at a fast pace.
- Review financing options. [Federal incentives](#) can help reduce upfront costs, with certain EV models eligible for a tax credit of up to \$7,500.

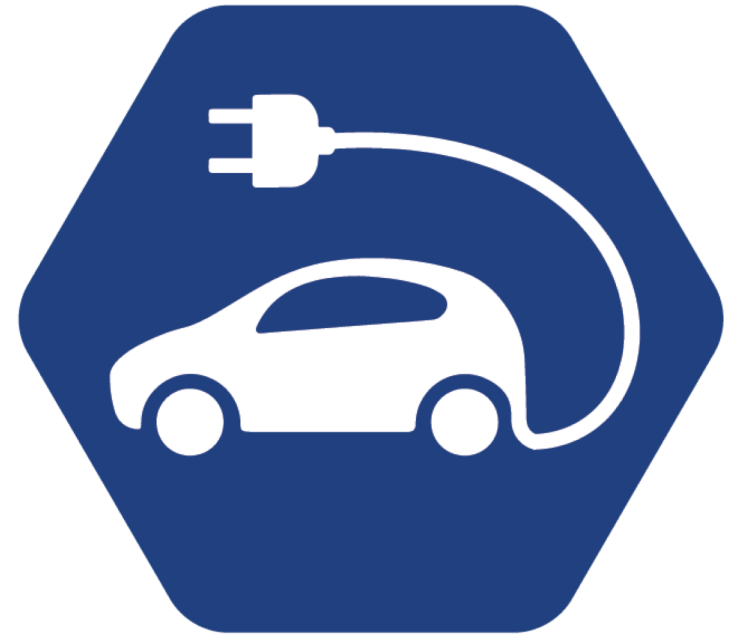


# The Fundamentals of Charging

**Level 1 Charging:** Provides charging through a common residential 120-volt AC outlet. Can take 40-50+ hours to charge an EV to 80%. Common for single family homes.

**Level 2 Charging:** Higher-rate AC charging through 240V or 208V electrical service. Can charge an EV to 80% in 4-10 hours. Common for home, workplace, and public charging.

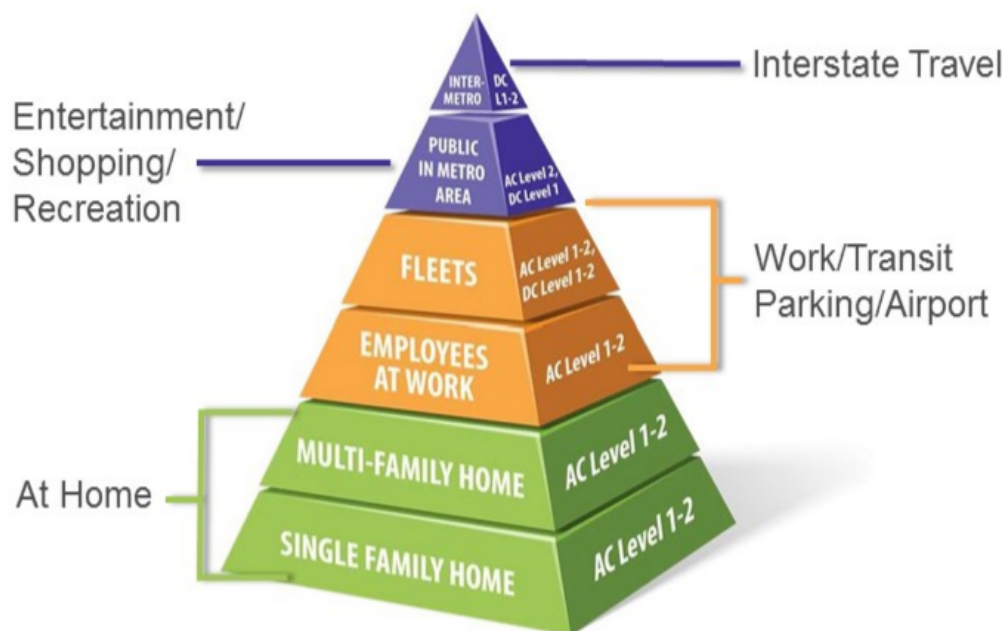
**Direct Current Fast Charging:** Requires at least 480V. Can charge an EV to 80% in 20 minutes to 1 hour. Common for heavy-traffic corridors.



For more information, see source materials at <https://www.transportation.gov/rural/ev/toolkit/ev-basics/charging-speeds>



# EV Charging in HOA & COA Communities

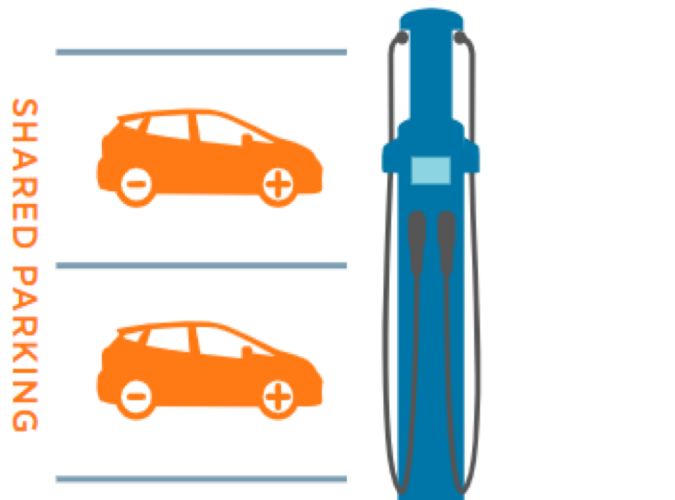


- We commonly hear that electric vehicles are best charged at home.
- However, residents of HOA communities face several challenges to at-home EV charging.
- Fairfax County has over 1,500 HOAs.
- Charge Up Fairfax aims to help HOAs with those challenges.
- Fairfax County also understands that EV charging is an important amenity and enhances the appeal of a community.

# Program Overview

Charge Up aims to help HOAs with the installation of Level 2 charging stations for residents and their guests.

## Community charging



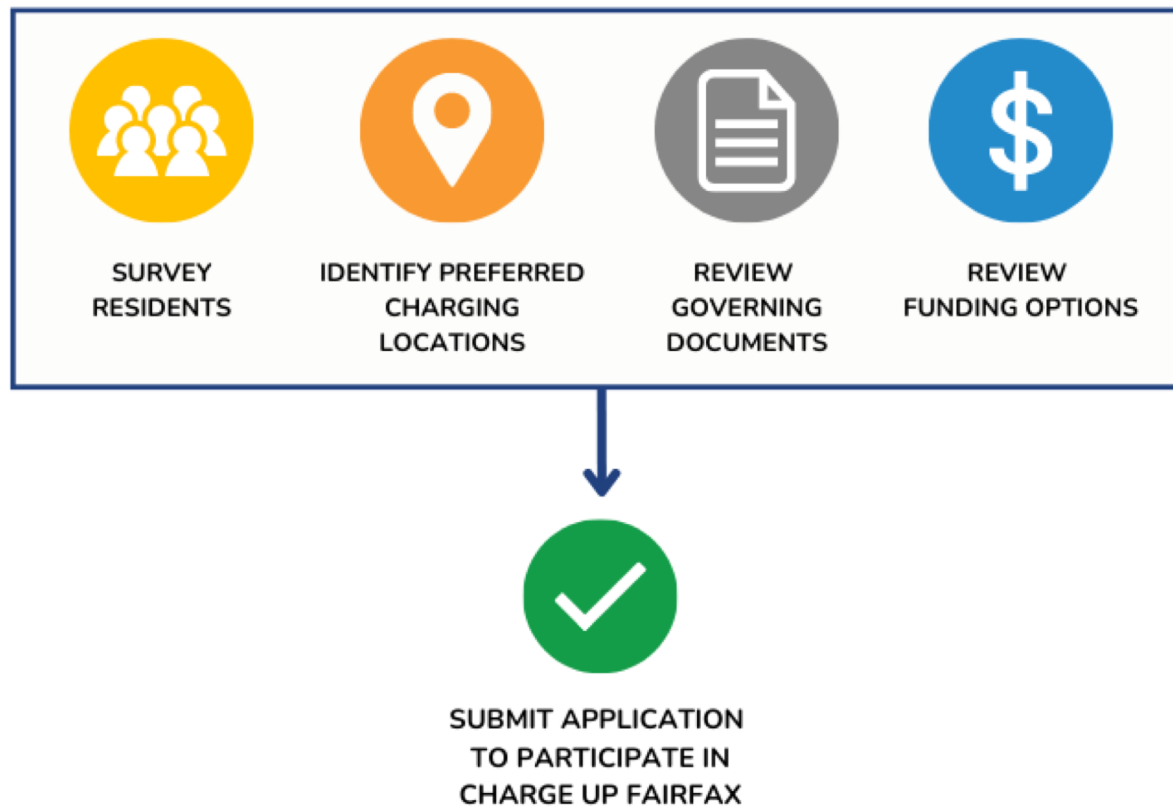
Three-phase approach to help with the installation of EV supply equipment in HOAs:

**1.HOA Exploration Phase** – HOAs examine community needs

**2.County Engagement Phase** – HOAs selected for Charge Up Fairfax receive engineering visit and feasibility memo

**3.HOA Implementation Phase** – HOAs hire a contractor and may request a reimbursement grant following installation

# HOA Exploration Phase



# Fairfax County Engagement Phase



**HOA applies to Charge Up Fairfax**



**HOA is selected for Charge Up Fairfax**



**County's contractor conducts engineering site assessment**



**Findings presented to HOA in a feasibility memo**



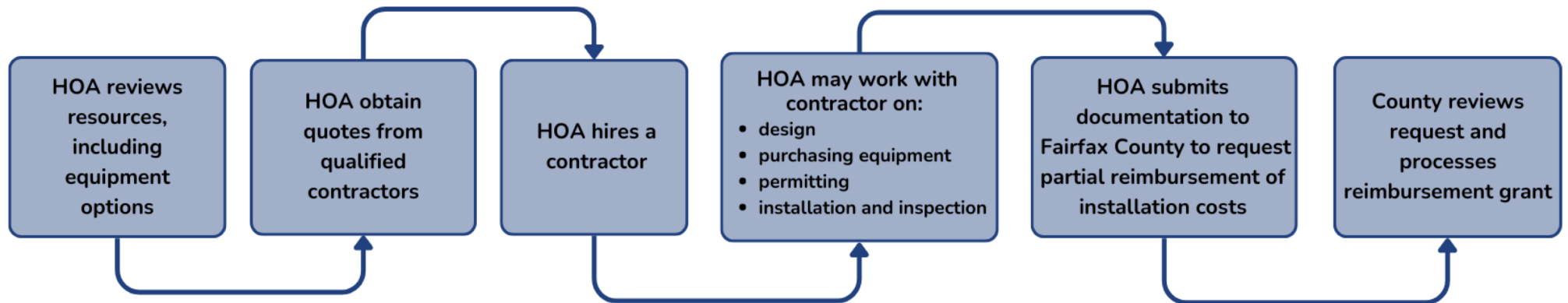
**HOA discusses feasibility memo and options with the association**

**Feasibility memo provided by the county examines:**

- Physical and environmental barriers
- Power sources
- Site conditions
- Estimated costs and project timeline



# HOA Implementation Phase



# Reimbursement Grant Program

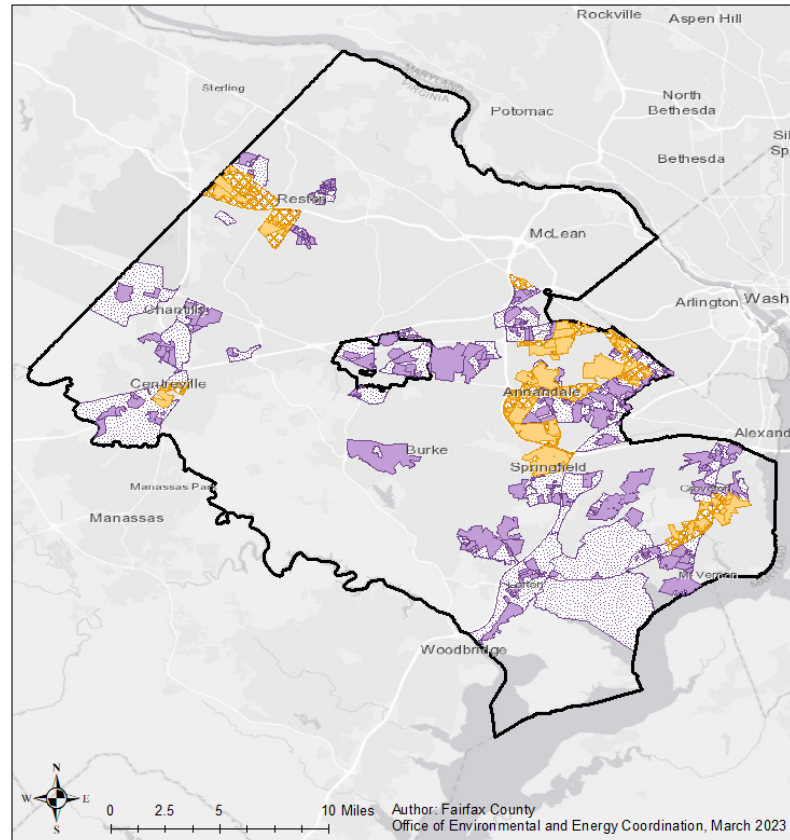


- 🚗 Charge Up Fairfax pilot program HOAs are eligible for a grant to cover one-third of eligible expenses, **up to \$5,000**, once terms are met.
- 🚗 Equipment must be **operational** with terms and conditions of program met.
- 🚗 Request form and attachments, including evidence of expenditures, must be submitted.
- 🚗 Request for grant funds must be made within **one year of acceptance** into Charge Up Fairfax.

# Equity Considerations

**Some HOAs will qualify for a \$10,000 reimbursement grant.**

HOAs classified as having high or very high vulnerability in the Fairfax County Vulnerability Index, or that are classified as disadvantaged in the Federal Government's Justice40 Initiative, are eligible for up to \$10,000.



Fairfax County, Virginia  
Civic Associations and  
Demographic Vulnerability  
*One Fairfax Vulnerability Index  
Justice 40 Vulnerability Index*

## Legend

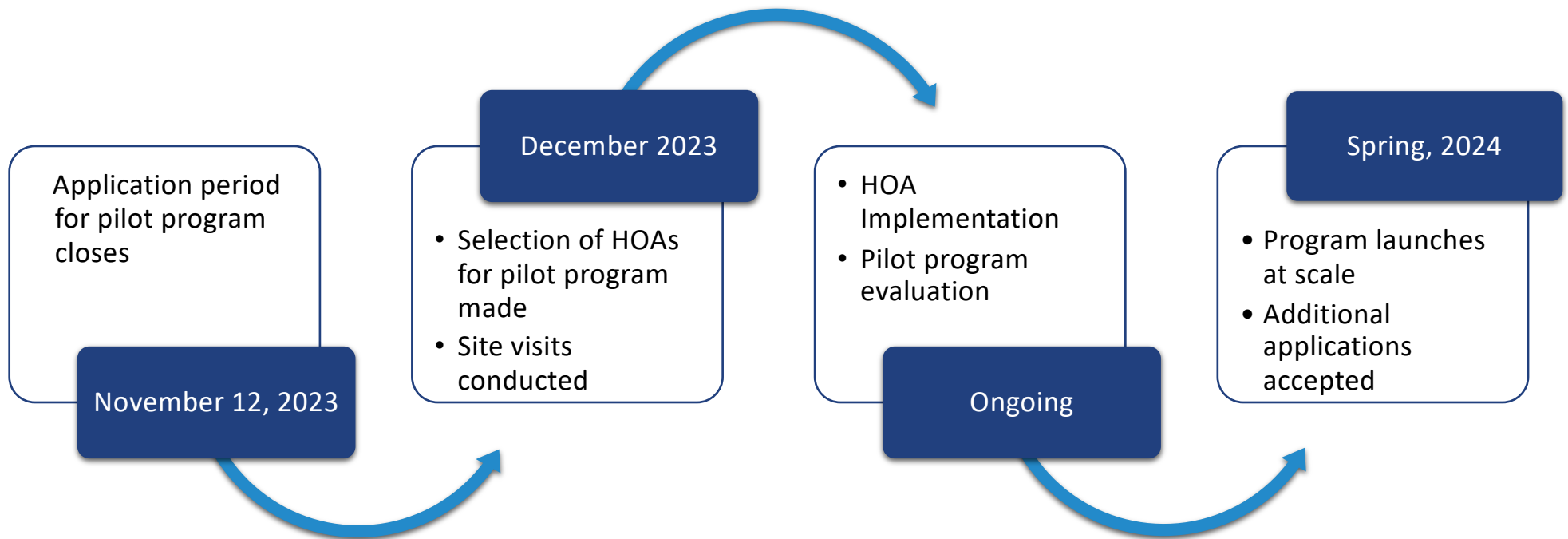
- Civic Associations:  
BOTH Justice 40 & One Fairfax
- Civic Associations:  
One Fairfax, but not Justice 40
- Justice 40  
Vulnerable Census Tracts
- One Fairfax  
Vulnerable Census Tracts

This map shows Civic Associations in Fairfax County that may have higher demographic or socioeconomic vulnerability, according to One Fairfax (local) and Justice40 (federal) designations.

Orange Civic Associations are those that intersect Census Tracts classified as vulnerable by BOTH Justice 40 and One Fairfax. Note: All Justice 40 Census Tracts are also One Fairfax Census Tracts.

Purple Civic Associations are those that intersect Census Tracts classified as vulnerable by One Fairfax, but not by Justice 40.

# Charge Up Fairfax Timeline





# Apply for the Pilot Program

When you're ready to submit your application package, verify you have:

- ✓ Surveyed residents
- ✓ Selected a preferred location for the EVCS
- ✓ Completed the Application
- ✓ Completed the Application Package Checklist
- ✓ Signed the Terms and Conditions
- ✓ Compiled all relevant attachments



*Tip for Success:* Download the application now and complete it over time.

Remember to sign up for program updates on our webpage!

<https://bit.ly/ChargeUpFFX>

# What Questions Do You Have?



# Thank you!

Please feel welcome to reach out with any additional questions.

**Gina Weil**

Climate Mitigation Specialist  
Office of Environmental and Energy Coordination  
regina.weil@fairfaxcounty.gov  
703-324-5955

<https://bit.ly/ChargeUpFFX>

